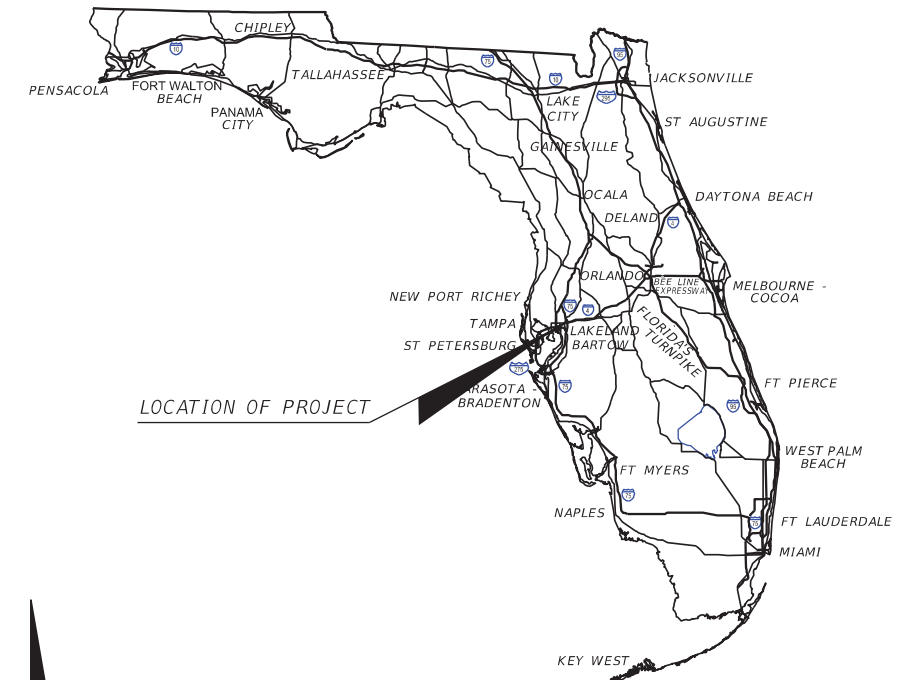


COMPONENTS OF CONTRACT PLANS SET
ROADWAY DETOUR PLANS

TAMPA HILLSBOROUGH
EXPRESSWAY AUTHORITY

CONTRACT PLANS

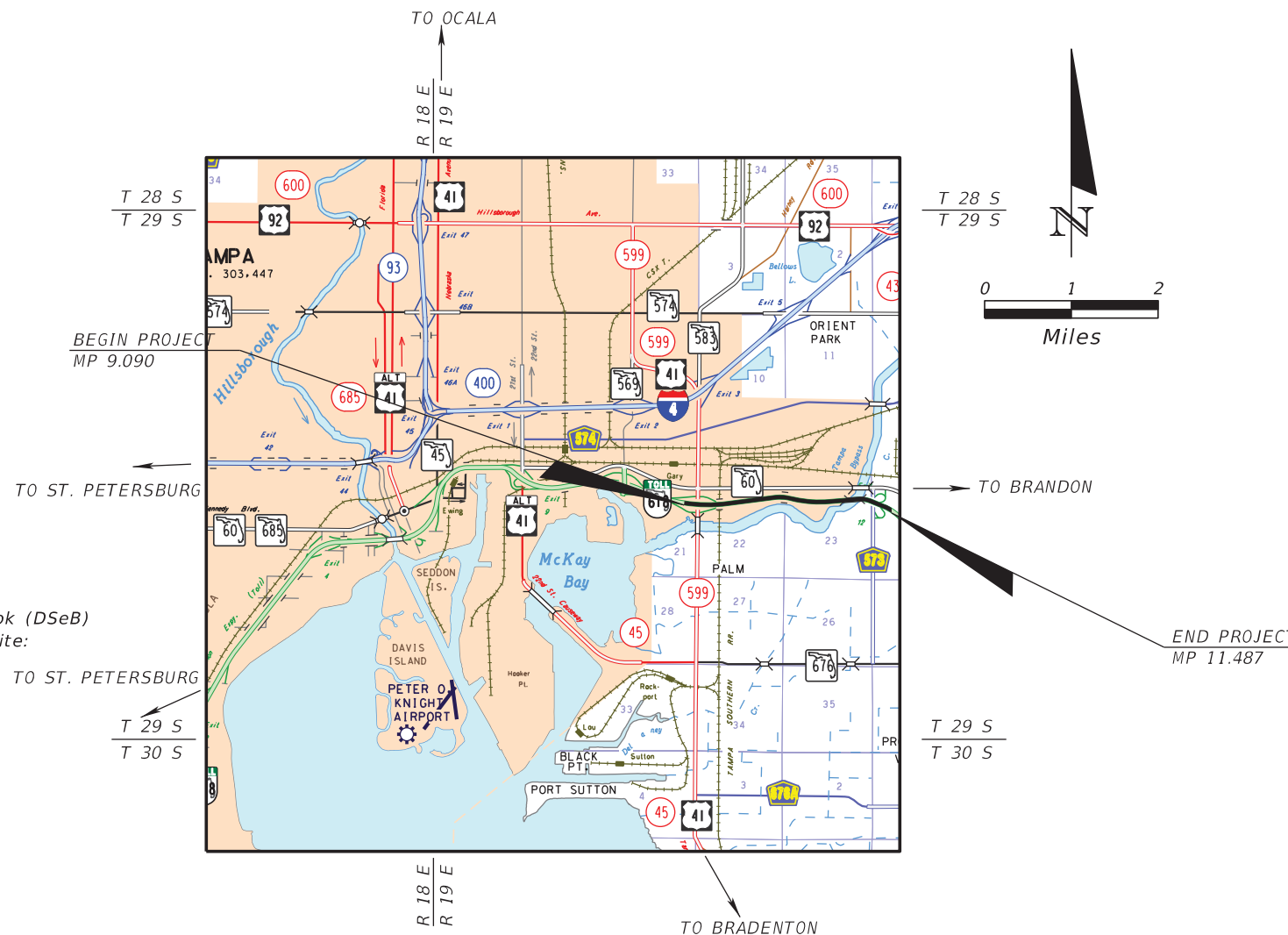
THEA PROJECT ID (N/A)
HILLSBOROUGH COUNTY (10002)
STATE ROAD NO. 618



INDEX OF ROADWAY DETOUR PLANS

SHEET NO.	SHEET DESCRIPTION
1	KEY SHEET
2	SIGNATURE SHEET
SQ-1	SUMMARY OF QUANTITIES
3	DETOUR NOTES
4	ADVANCE SIGN LAYOUT
5 - 6	DETOUR SIGN ASSEMBLY
7	DETOUR LAYOUT
8 - 15	DETOUR PLAN
16 - 24	DETOUR DETAIL

SELMON EXPRESSWAY REVERSIBLE EXPRESS LANES (REL)
STRUCTURE POWER WASHING DETOUR PLANS



ROADWAY SHOP DRAWINGS
TO BE SUBMITTED TO:
DARREN P. BRANDES, P.E.
KISINGER CAMPO AND ASSOCIATES CORP.
201 N. FRANKLIN STREET, SUITE 400
TAMPA, FLORIDA 33602

PLANS PREPARED BY:
KISINGER CAMPO AND ASSOCIATES CORP.
CONSULTING ENGINEERS & PLANNERS
201 N. FRANKLIN STREET, SUITE 400
TAMPA, FLORIDA 33602
PHONE: (813) 871-5331
FAX: (813) 871-5135
CERTIFICATE OF AUTHORIZATION No. 02317
VENDOR No. 59-1677145

NOTE: THE SCALE OF THESE PLANS MAY
HAVE CHANGED DUE TO REPRODUCTION.

GOVERNING DESIGN STANDARDS:
Florida Department of Transportation, FY 2016-17 Design Standards eBook (DSeB)
and applicable Design Standards Revisions (DSRs) at the following website:
<http://www.dot.state.fl.us/rddesign/DesignStandards/Standards.shtm>

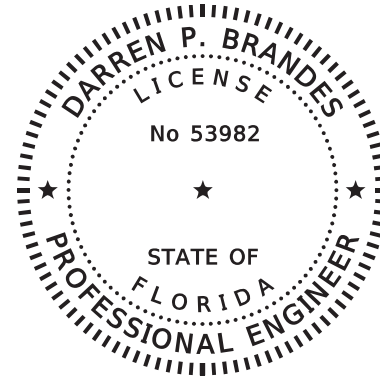
GOVERNING STANDARD SPECIFICATIONS:
Florida Department of Transportation, July 2016 Standard Specifications
for Road and Bridge Construction at the following website:
<http://www.dot.state.fl.us/programmanagement/Implemented/SpecBooks>

ROADWAY PLANS
ENGINEER OF RECORD: DARREN P. BRANDES, P.E.

P.E. NO.: 53982

FISCAL YEAR	SHEET NO.
	1

THE OFFICIAL RECORD OF THIS SHEET IS THE ELECTRONIC FILE DIGITALLY SIGNED AND SEALED UNDER RULE 61G15-23.004, F.A.C.



THIS DOCUMENT HAS BEEN DIGITALLY SIGNED AND SEALED BY:

PRINTED COPIES OF THIS DOCUMENT ARE NOT CONSIDERED SIGNED AND SEALED. THE SIGNATURE MUST BE VERIFIED ON THE ELECTRONIC DOCUMENTS.

KISINGER CAMPO & ASSOCIATES CORP.
 201 N. FRANKLIN STREET, SUITE 400
 TAMPA, FLORIDA 33602
 CERTIFICATE OF AUTHORIZATION NO. 02317
 ENGINEER OF RECORD: DARREN P. BRANDES, P.E.
 P.E. No.: 53982

THE ABOVE NAMED PROFESSIONAL ENGINEER SHALL BE RESPONSIBLE FOR THE FOLLOWING SHEETS IN ACCORDANCE WITH RULE 61G15-23.004, F.A.C.

ROADWAY DETOUR PLANS

<u>SHEET NO.</u>	<u>SHEET DESCRIPTION</u>
1	KEY SHEET
2	SIGNATURE SHEET
SQ-1	SUMMARY OF QUANTITIES
3	DETOUR NOTES
4	ADVANCE SIGN LAYOUT
5 - 6	DETOUR SIGN ASSEMBLY
7	DETOUR LAYOUT
8 - 15	DETOUR PLAN
16 - 24	DETOUR DETAIL

REVISIONS				Kisinger Campo & Associates Corp. 201 N. Franklin Street, Suite 400 Tampa, Florida 33602 Florida Certificate of Authorization No. 02317 Engineer of Record: Darren P. Brandes, P.E. P.E. No.: 53982	TAMPA HILLSBOROUGH EXPRESSWAY AUTHORITY			<i>SIGNATURE SHEET</i>	SHEET NO.
DATE	DESCRIPTION	DATE	DESCRIPTION		ROAD NO.	COUNTY	PROJECT ID		2
					618	HILLSBOROUGH	N/A		

SUMMARY OF TEMPORARY TRAFFIC CONTROL PLAN ITEMS

PAY ITEM NO.	PAY ITEM DESCRIPTION	UNIT	SR 618 TCP / DETOURS			50TH ST, 78TH CLOSURE DETOURS (1 DAY EACH)			GRAND TOTAL		DESIGN NOTES	CONSTRUCTION REMARKS
			DAYS	QUANTITY	TOTAL	DAYS	QUANTITY	TOTAL	P	F		
				P	P		P	P				
102-1	MAINTENANCE OF TRAFFIC	LS	40									
102-60	WORK ZONE SIGN	ED	40	389	15560	1	270	270	15830			
102-74-1	CHANNELIZING DEVICE TYPES I, II, DI, VP, DRUM, OR LCD	ED	40	235	9400	1	145	145	9545			
102-74-2	CHANNELIZING DEVICE, TYPE III, 6'	ED	40	28	1120	1	25	25	1145			
102-76	ARROW BOARD/ADVANCE WARNING ARROW PANEL	ED	40	3	120	1	4	4	124			
102-99	PORTABLE CHANGEABLE MESSAGE SIGN, TEMPORARY	ED	40	12	480	1	6	6	486			
102-150- 1	PORTABLE REGULATORY SIGN	ED	40	4	160				160			
102-150- 2	RADAR SPEED DISPLAY UNIT	ED	40	4	160				160			

<p align="center">REVISIONS</p> <table border="1"> <thead> <tr> <th>DATE</th> <th>DESCRIPTION</th> <th>DATE</th> <th>DESCRIPTION</th> </tr> </thead> <tbody> <tr> <td> </td> <td> </td> <td> </td> <td> </td> </tr> </tbody> </table>				DATE	DESCRIPTION	DATE	DESCRIPTION					Kisinger Campo & Associates Corp. 201 N. Franklin Street, Suite 400 Tampa, Florida 33602 Florida Certificate of Authorization No. 02317 Engineer of Record: Darren P. Brandes, P.E. P.E. No.: 53982	<p align="center">TAMPA HILLSBOROUGH EXPRESSWAY AUTHORITY</p> <table border="1"> <thead> <tr> <th>ROAD NO.</th> <th>COUNTY</th> <th>PROJECT ID</th> </tr> </thead> <tbody> <tr> <td align="center">618</td> <td align="center">HILLSBOROUGH</td> <td align="center">N/A</td> </tr> </tbody> </table>	ROAD NO.	COUNTY	PROJECT ID	618	HILLSBOROUGH	N/A	<p align="center">SUMMARY OF QUANTITIES</p>	SHEET NO. SQ-1
DATE	DESCRIPTION	DATE	DESCRIPTION																		
ROAD NO.	COUNTY	PROJECT ID																			
618	HILLSBOROUGH	N/A																			

THE OFFICIAL RECORD OF THIS SHEET IS THE ELECTRONIC FILE DIGITALLY SIGNED AND SEALED UNDER RULE 61G15-23.004, F.A.C.

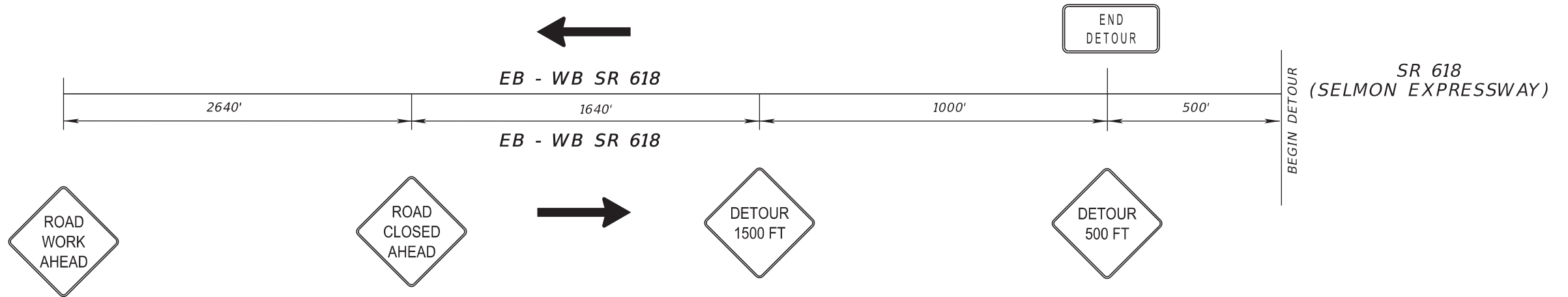
TEMPORARY TCP PLAN NOTES

1. LANE CLOSURES AND DETOURS REQUIRED FOR ALL WORK SHALL OCCUR ONLY DURING THE FOLLOWING TIMES:
 - a. LANE CLOSURES ON SR 618 SHALL OCCUR ONLY BETWEEN THE HOURS OF 8:00 PM AND 5:00 AM.
 - b. LANE CLOSURES ON LOCAL STREETS SHALL OCCUR ONLY BETWEEN THE HOURS OF 11:00 PM AND 5:00 AM.
 - c. NO LANE CLOSURES SHALL OCCUR AT ANY TIME BETWEEN 5:00 AM FRIDAY AND 8:00 PM SUNDAY.
 - d. SELMON EXPRESSWAY REL SHALL REMAIN OPEN AT ALL TIMES WITH THE FOLLOWING EXCEPTION: SELMON EXPRESSWAY REL MAY BE CLOSED FOR FIVE CONSECUTIVE NIGHTS DURING SEGMENT 3 DETOURS FOR THE PURPOSES OF CLEANING THE SELMON REL OUTSIDE TRAFFIC RAILING ONLY.
2. PER FDOT SPECIFICATION 8-6.4, SUSPENSION OF CONTRACTORS OPERATIONS: HOLIDAYS AND SPECIAL EVENTS, SPECIAL EVENTS FOR THIS PROJECT INCLUDE:
 - a. TWO HOURS BEFORE TO TWO HOURS AFTER BUCCANEERS HOME GAMES OR OTHER EVENTS WITH A CROWD OF AT LEAST 10,000 TAKING PLACE AT RAYMOND JAMES STADIUM.
 - b. DURING GASPARILLA AND GUAVAWEEN.
 - c. TWO HOURS BEFORE TO TWO HOURS AFTER EVENTS TAKING PLACE AT AMALIE ARENA.
3. TRAFFIC CONDITIONS, ACCIDENTS AND OTHER UNFORESEEN EMERGENCY CONDITIONS MAY REQUIRE THE ENGINEER TO RESTRICT OR REMOVE LANE CLOSURES OR CHANNELIZATIONS SHOWN IN THE PLANS. THE CONTRACTOR SHALL MAKE THE NECESSARY ADJUSTMENTS, AS DIRECTED BY THE ENGINEER WITHOUT DELAY. THE CONTRACTOR SHALL RESPOND TO ANY REQUESTS MADE BY THE ENGINEER FOR CORRECTION, IMPROVEMENT OR MODIFICATION OF ALL TEMPORARY TRAFFIC CONTROL DEVICES, INCLUDING SIGNALIZATION AND TEMPORARY LIGHTING WITHIN 30 MINUTES FROM THE TIME OF NOTIFICATION.
4. THE CONTRACTOR SHALL NOTIFY ALL EMERGENCY AND RESCUE AGENCIES LOCATED IN THE PROJECT VICINITY AS WELL AS THE ENGINEER IN WRITING 14 DAYS IN ADVANCE OF ANY LANE CLOSURES, DETOURS OR RESTRICTIONS, AND AGAIN 24 HOURS IN ADVANCE.
5. THE EXISTING POSTED SPEED LIMITS ON SR 618 SHALL BE MAINTAINED AT ALL TIMES, EXCEPT DURING LANE CLOSURES PER INDEX 670. THE EXISTING POSTED SPEED LIMITS ON ALL OTHER ROADWAYS SHALL BE MAINTAINED.
6. THE CONTRACTOR SHALL, AT THE DISCRETION OF THE ENGINEER, OPEN ANY TEMPORARY LANE CLOSURE CAUSING EXTENDED TRAFFIC CONGESTION (5 MINUTE DELAY) UNTIL TRAFFIC HAS RETURNED TO AN ACCEPTABLE FLOW AS DETERMINED BY THE ENGINEER.
7. LOCATIONS OF WORK ZONE ACCESS SHALL BE DETERMINED BY THE CONTRACTOR. THE CONTRACTOR SHALL SUBMIT A WRITTEN WORK ZONE ACCESS PLAN FOR EACH WORK ZONE LOCATION FOR APPROVAL BY THE ENGINEER PRIOR TO ACCESSING THE WORK ZONES.
8. THE CONTRACTOR SHALL NOTIFY THE CITY OF TAMPA TRAFFIC ENGINEERING DEPARTMENT AND FDOT TRAFFIC OPERATIONS LIAISON 48 HOURS PRIOR TO ANY TEMPORARY MODIFICATION OF AN EXISTING TRAFFIC SIGNAL.
9. UNIFORMED TRAFFIC CONTROL OFFICERS INCLUDING MARKED LAW ENFORCEMENT VEHICLES SHALL BE USED TO ASSIST IN CONTROLLING AND DIRECTING TRAFFIC WITHIN SIGNALIZED INTERSECTIONS WHEN SIGNALS ARE NOT IN USE OR WHEN TEMPORARY TRAFFIC ALIGNMENT CONFLICTS WITH SIGNAL ALIGNMENT. THE NUMBER OF OFFICERS USED FOR EACH OPERATION SHALL BE APPROVED BY THE ENGINEER. THE COST OF TRAFFIC CONTROL OFFICERS SHALL BE INCLUDED IN PAY ITEM 102-14 ONLY WHEN THEY ARE USED FOR THE PURPOSE DESCRIBED IN THIS NOTE AND WHEN THEY ARE ACTIVELY ENGAGED IN THAT ACTIVITY. COSTS FOR TRAFFIC CONTROL OFFICERS USED FOR ANY OTHER PURPOSE SHALL BE THE RESPONSIBILITY OF THE CONTRACTOR.
10. NO POWER WASHING IS ALLOWED WHILE TRAIN IS PASSING UNDER SELMON EXPRESSWAY.
11. INDEX 670 SHALL BE UTILIZED FOR ALL LANE CLOSURES ON SR 618 AND I-4/SELMON CONNECTOR.
12. CITY OF TAMPA RIGHT-OF-WAY PERMITS WILL BE REQUIRED WHENEVER CITY OWNED STREETS ARE USED FOR WORK ZONE TRAFFIC CONTROL, CLOSURES, OR DETOURS. THE CONTRACTOR IS ADVISED TO REVIEW THE PERMIT APPLICATION REQUIREMENTS PRIOR TO BID. THE PERMIT APPLICATION CAN BE FOUND AT <http://www.tampagov.net/planning-division/right-way-permits>

MAINTAIN SPACING OF ALL CHANNELIZATION DEVICES FOR ALL LANE CLOSURES AND DETOURS PER TABLE I BELOW

Speed (mph)	Max. Distance Between Devices (ft.)			
	Cones or Tubular Markers		Type I or Type II Barricades or Vertical Panels or Drums	
	Taper	Tangent	Taper	Tangent
25	25	50	25	50
30 to 45	25	50	30	50
50 to 70	25	50	50	100

REVISIONS				Kisinger Campo & Associates Corp. 201 N. Franklin Street, Suite 400 Tampa, Florida 33602 Florida Certificate of Authorization No. 02317 Engineer of Record: Darren P. Brandes, P.E. P.E. No.: 53982	TAMPA HILLSBOROUGH EXPRESSWAY AUTHORITY			DETOUR NOTES SEGMENT 4	SHEET NO.
DATE	DESCRIPTION	DATE	DESCRIPTION		ROAD NO.	COUNTY	PROJECT ID		
					618	HILLSBOROUGH	N/A		



SELMON EXPRESSWAY SIGN LAYOUT

ADVANCE SIGN LAYOUT TO BE PLACED ON SELMON EXPRESSWAY (EB AND WB) IN ADVANCE OF DETOUR AND ON I-75 IN ADVANCE OF DETOUR. SIGNS TO BE USED IN CONJUNCTION WITH INDEX 670 SIGNS.

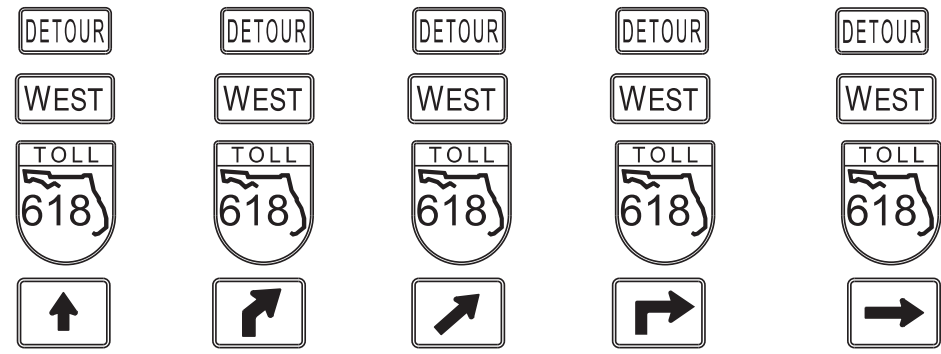
PCMS MESSAGES

- MESSAGE 1: ROAD WORK BEGINS < DAY > 7 DAYS PRIOR TO ACTIVE WORK, LOCATE 1 PCMS ON EB SR 618 AND 1 PCMS ON WB SR 618 IN ADVANCE OF THE SEGMENT 4 LIMITS.
- MESSAGE 2 (EB): LEFT (2) LANE(S) CLOSED MERGE RIGHT DURING LANE CLOSURE EASTBOUND, LOCATE 800 FT. IN ADVANCE OF W20-5A SIGN. THIS PCMS IS IN ADDITION TO PCMS SHOWN IN INDEX 670.
- MESSAGE 3 (WB): LEFT LANE CLOSED MERGE RIGHT DURING LANE CLOSURE WESTBOUND, LOCATE 800 FT. IN ADVANCE OF W20-5L SIGN. THIS PCMS IS IN ADDITION TO PCMS SHOWN IN INDEX 670.

LANE CLOSURES:
INSTALL THE MOTORIST AWARENESS SYSTEM AND ALL ADVANCE WARNING SIGNS FOR ALL LANE CLOSURES ON SR 618 AS SHOWN IN INDEX 670.

REVISIONS				Kisinger Campo & Associates Corp. 201 N. Franklin Street, Suite 400 Tampa, Florida 33602 Florida Certificate of Authorization No. 02317 Engineer of Record: Darren P. Brandes, P.E. P.E. No.: 53982	TAMPA HILLSBOROUGH EXPRESSWAY AUTHORITY			ADVANCE SIGN LAYOUT	SHEET NO.
DATE	DESCRIPTION	DATE	DESCRIPTION		ROAD NO.	COUNTY	PROJECT ID		
						618	HILLSBOROUGH		N/A

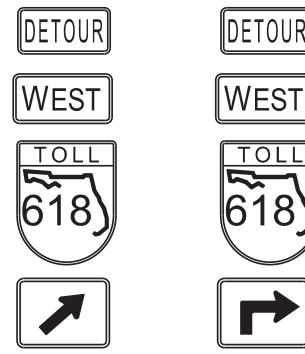
THE OFFICIAL RECORD OF THIS SHEET IS THE ELECTRONIC FILE DIGITALLY SIGNED AND SEALED UNDER RULE 61G15-23.004, F.A.C.



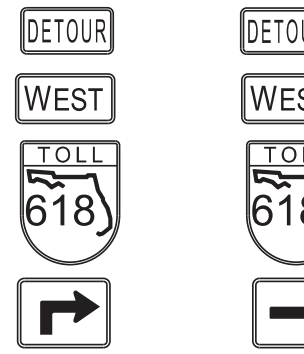
DWS 1



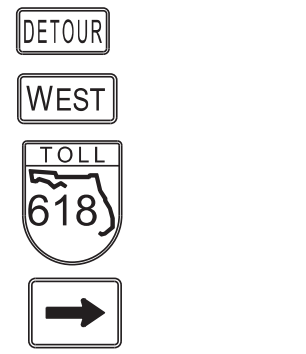
DWR 1



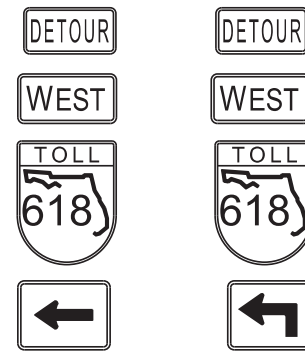
DWR 2



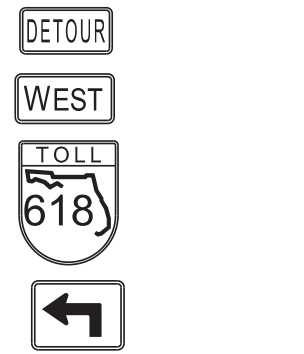
DWR 3



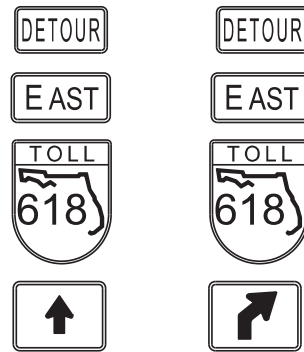
DWR 4



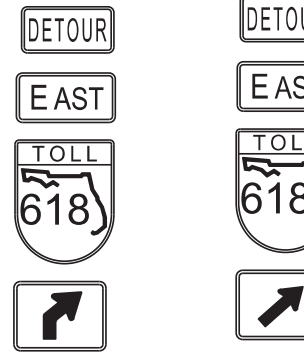
DWL 4



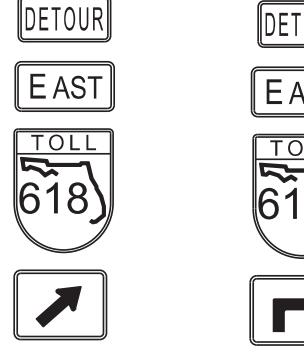
DWL 3



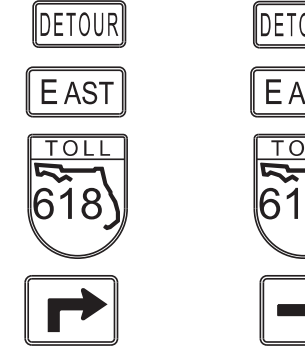
DES 1



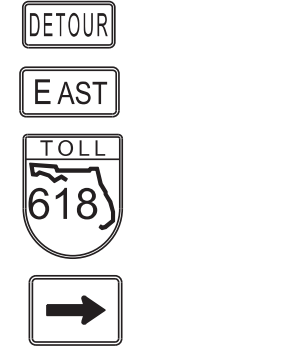
DER 1



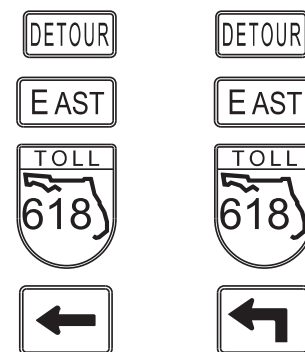
DER 2



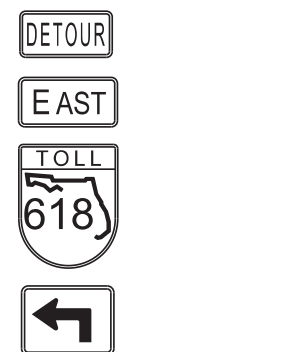
DER 3



DER 4



DEL 4



DEL 3



RC 1



RC 3



RC 4



RWA



RCA



DA



END



D75S1



D75L1



D75L2



D75R1



D75R2



PCMS 1



PCMS 2



PCMS 3



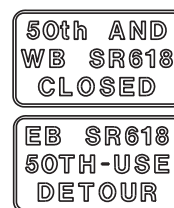
PCMS 4



PCMS 5



PCMS 6



PCMS 7



PCMS 8



PCMS 9



PCMS 10

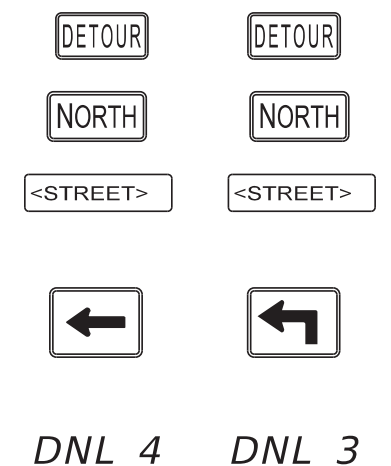
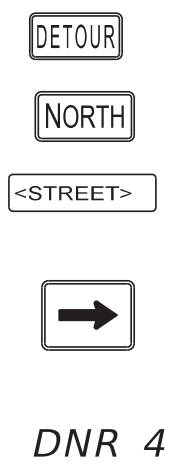
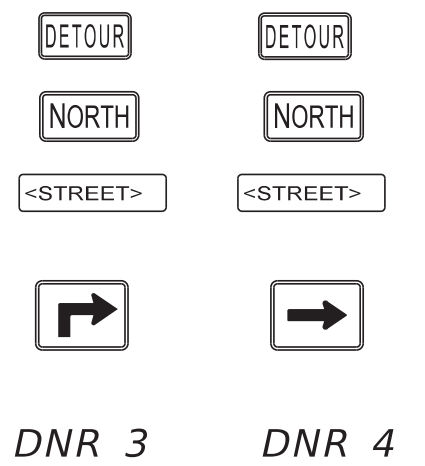
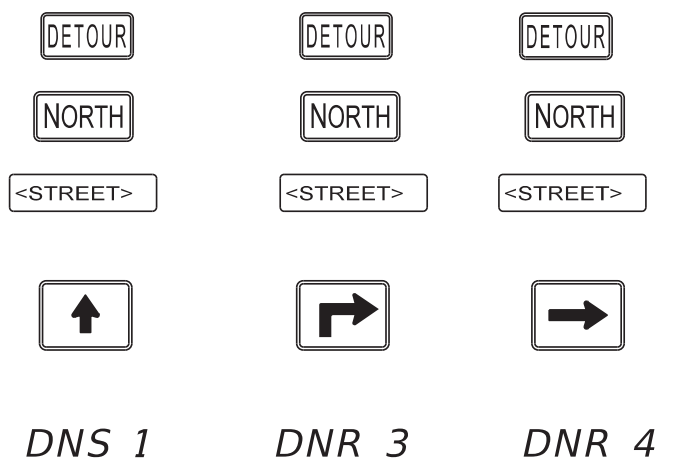
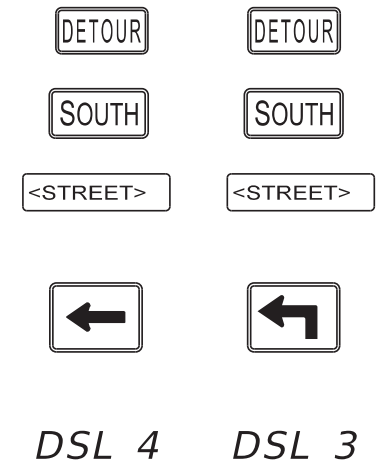
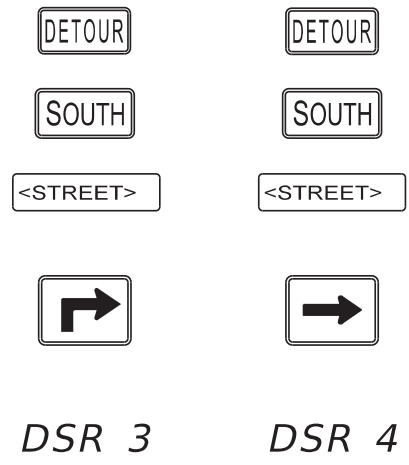
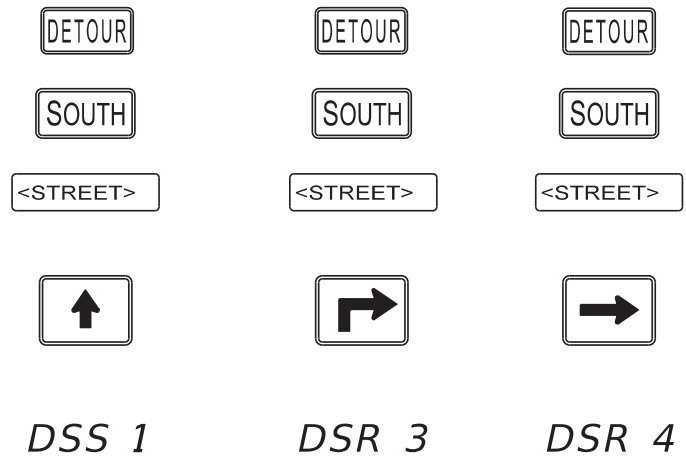


PCMS 11

REVISIONS				Kisinger Campo & Associates Corp. 201 N. Franklin Street, Suite 400 Tampa, Florida 33602 Florida Certificate of Authorization No. 02317 Engineer of Record: Darren P. Brandes, P.E. P.E. No.: 53982	TAMPA HILLSBOROUGH EXPRESSWAY AUTHORITY			SHEET NO. 5
DATE	DESCRIPTION	DATE	DESCRIPTION		ROAD NO.	COUNTY	PROJECT ID	
					618	HILLSBOROUGH	N/A	

DETOUR SIGN ASSEMBLY

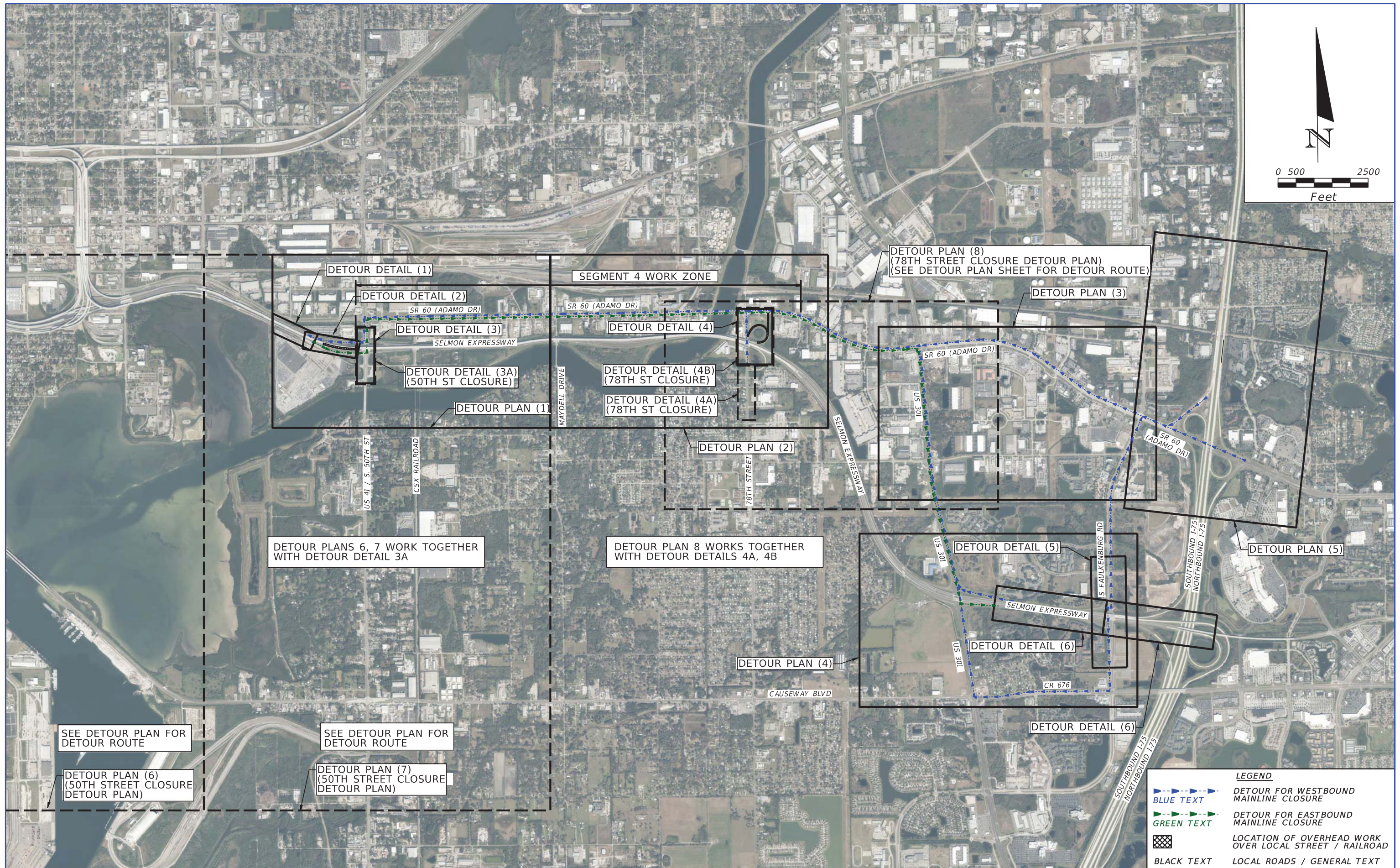
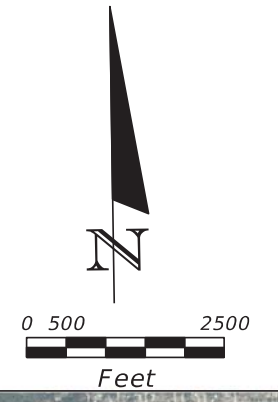
THE OFFICIAL RECORD OF THIS SHEET IS THE ELECTRONIC FILE DIGITALLY SIGNED AND SEALED UNDER RULE 61G15-23.004, F.A.C.



LOCAL STREET DETOUR

REVISIONS				Kisinger Campo & Associates Corp. 201 N. Franklin Street, Suite 400 Tampa, Florida 33602 Florida Certificate of Authorization No. 02317 Engineer of Record: Darren P. Brandes, P.E. P.E. No.: 53982	TAMPA HILLSBOROUGH EXPRESSWAY AUTHORITY			DETOUR SIGN ASSEMBLY	SHEET NO.
DATE	DESCRIPTION	DATE	DESCRIPTION		ROAD NO.	COUNTY	PROJECT ID		
						618	HILLSBOROUGH		N/A

THE OFFICIAL RECORD OF THIS SHEET IS THE ELECTRONIC FILE DIGITALLY SIGNED AND SEALED UNDER RULE 61G15-23.004, F.A.C.



LEGEND

	DETOUR FOR WESTBOUND MAINLINE CLOSURE
	DETOUR FOR EASTBOUND MAINLINE CLOSURE
	LOCATION OF OVERHEAD WORK OVER LOCAL STREET / RAILROAD
	LOCAL ROADS / GENERAL TEXT

REVISIONS			
DATE	DESCRIPTION	DATE	DESCRIPTION

Kisinger Campo & Associates Corp.
 201 N. Franklin Street, Suite 400
 Tampa, Florida 33602
 Florida Certificate of Authorization No. 02317
 Engineer of Record: Darren P. Brandes, P.E.
 P.E. No.: 53982

TAMPA HILLSBOROUGH COUNTY EXPRESSWAY AUTHORITY		
ROAD NO.	COUNTY	FINANCIAL PROJECT ID
SR 618	HILLSBOROUGH	N/A

<p>DETOUR LAYOUT SEGMENT 4</p>	<p>SHEET NO. 7</p>
--------------------------------------------------	-------------------------------

THE OFFICIAL RECORD OF THIS SHEET IS THE ELECTRONIC FILE DIGITALLY SIGNED AND SEALED UNDER RULE 61G15-23.004, F.A.C.



SEE DETOUR DETAIL SHEETS FOR SIGNS ON EB SR 618

LEGEND:

	TRAFFIC FLOW
	WORK AREA
	CONSTRUCTION SIGN
	TYPE I OR TYPE II BARRICADE OR VERTICAL PANEL, DRUM OR CONES PER INDEX 600
	ADVANCE WARNING ARROW PANEL
	TYPE III BARRICADE
	PORTABLE CHANGEABLE (VARIABLE) MESSAGE SIGN
	SELMON EXPRESSWAY (WB) DETOUR ROUTE
	SELMON EXPRESSWAY (EB) DETOUR ROUTE

REVISIONS			
DATE	DESCRIPTION	DATE	DESCRIPTION

Kisinger Campo & Associates Corp.
 201 N. Franklin Street, Suite 400
 Tampa, Florida 33602
 Florida Certificate of Authorization No. 02317
 Engineer of Record: Darren P. Brandes, P.E.
 P.E. No.: 53982

TAMPA HILLSBOROUGH EXPRESSWAY AUTHORITY		
ROAD NO.	COUNTY	PROJECT ID
618	HILLSBOROUGH	N/A

DETOUR PLAN (1)
SEGMENT 4

SHEET NO.
 8

THE OFFICIAL RECORD OF THIS SHEET IS THE ELECTRONIC FILE DIGITALLY SIGNED AND SEALED UNDER RULE 61G15-23.004, F.A.C.



LEGEND:

	TRAFFIC FLOW
	WORK AREA
	CONSTRUCTION SIGN
	TYPE I OR TYPE II BARRICADE OR VERTICAL PANEL, DRUM OR CONES PER INDEX 600
	ADVANCE WARNING ARROW PANEL
	TYPE III BARRICADE
	PORTABLE CHANGEABLE (VARIABLE) MESSAGE SIGN
	SELMON EXPRESSWAY (WB) DETOUR ROUTE
	SELMON EXPRESSWAY (EB) DETOUR ROUTE

REVISIONS	
DATE	DESCRIPTION

Kisinger Campo & Associates Corp.
 201 N. Franklin Street, Suite 400
 Tampa, Florida 33602
 Florida Certificate of Authorization No. 02317
 Engineer of Record: Darren P. Brandes, P.E.
 P.E. No.: 53982

TAMPA HILLSBOROUGH EXPRESSWAY AUTHORITY		
ROAD NO.	COUNTY	PROJECT ID
618	HILLSBOROUGH	N/A

DETOUR PLAN (2)
SEGMENT 4

SHEET NO.
 9

THE OFFICIAL RECORD OF THIS SHEET IS THE ELECTRONIC FILE DIGITALLY SIGNED AND SEALED UNDER RULE 61G15-23.004, F.A.C.



LEGEND:

	TRAFFIC FLOW
	WORK AREA
	CONSTRUCTION SIGN
	TYPE I OR TYPE II BARRICADE OR VERTICAL PANEL, DRUM OR CONES PER INDEX 600
	ADVANCE WARNING ARROW PANEL
	TYPE III BARRICADE
	PORTABLE CHANGEABLE (VARIABLE) MESSAGE SIGN
	SELMON EXPRESSWAY (WB) DETOUR ROUTE
	SELMON EXPRESSWAY (EB) DETOUR ROUTE

REVISIONS			
DATE	DESCRIPTION	DATE	DESCRIPTION

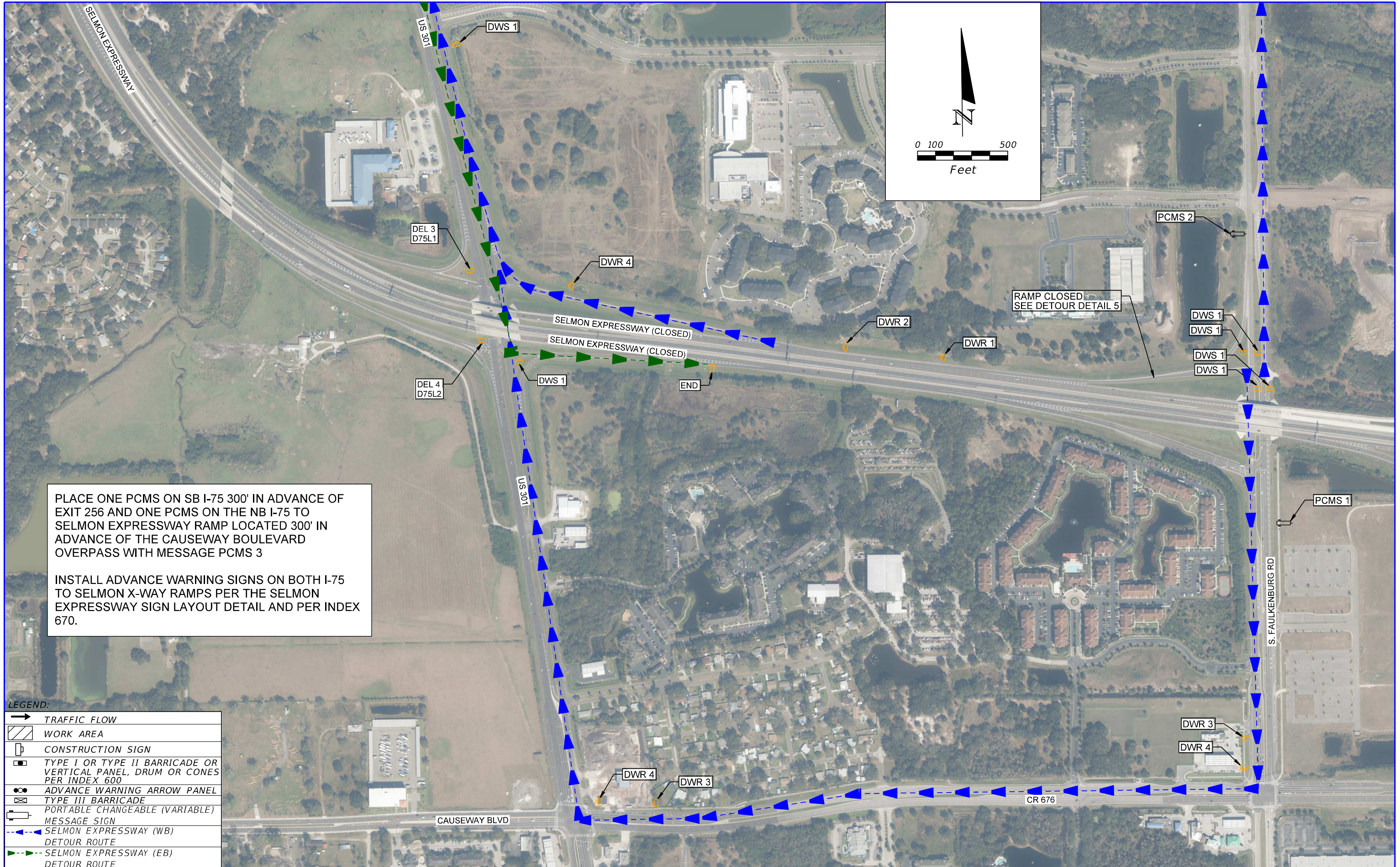
Kisinger Campo & Associates Corp.
 201 N. Franklin Street, Suite 400
 Tampa, Florida 33602
 Florida Certificate of Authorization No. 02317
 Engineer of Record: Darren P. Brandes, P.E.
 P.E. No.: 53982

TAMPA HILLSBOROUGH EXPRESSWAY AUTHORITY		
ROAD NO.	COUNTY	PROJECT ID
618	HILLSBOROUGH	N/A

**DETOUR PLAN (3)
 SEGMENT 4**

SHEET NO.
 10

THE OFFICIAL RECORD OF THIS SHEET IS THE ELECTRONIC FILE DIGITALLY SIGNED AND SEALED UNDER RULE 61G15-23.004, F.A.C.



PLACE ONE PCMS ON SB I-75 300' IN ADVANCE OF EXIT 256 AND ONE PCMS ON THE NB I-75 TO SELMON EXPRESSWAY RAMP LOCATED 300' IN ADVANCE OF THE CAUSEWAY BOULEVARD OVERPASS WITH MESSAGE PCMS 3

INSTALL ADVANCE WARNING SIGNS ON BOTH I-75 TO SELMON X-WAY RAMPS PER THE SELMON EXPRESSWAY SIGN LAYOUT DETAIL AND PER INDEX 670.

LEGEND:

	TRAFFIC FLOW
	WORK AREA
	CONSTRUCTION SIGN
	TYPE I OR TYPE II BARRICADE OR VERTICAL PANEL, DRUM OR CONES PER INDEX 600
	ADVANCE WARNING ARROW PANEL
	TYPE III BARRICADE
	PORTABLE CHANGEABLE (VARIABLE) MESSAGE SIGN
	SELMON EXPRESSWAY (WB) DETOUR ROUTE
	SELMON EXPRESSWAY (EB) DETOUR ROUTE

REVISIONS			
DATE	DESCRIPTION	DATE	DESCRIPTION

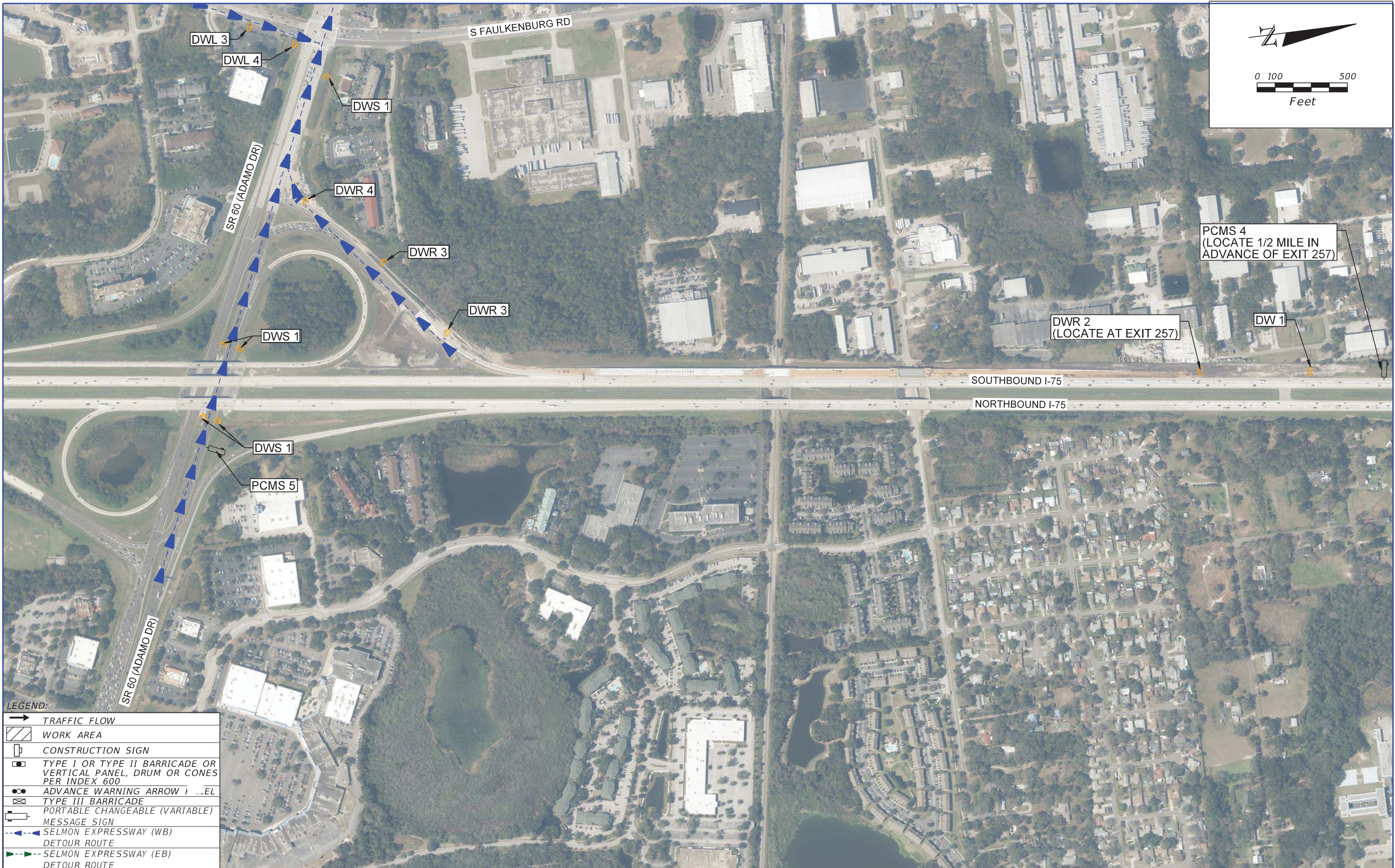
Kisinger Campo & Associates Corp.
 201 N. Franklin Street, Suite 400
 Tampa, Florida 33602
 Florida Certificate of Authorization No. 02317
 Engineer of Record: Darren P. Brandes, P.E.
 P.E. No.: 53982

TAMPA HILLSBOROUGH EXPRESSWAY AUTHORITY		
ROAD NO.	COUNTY	PROJECT ID
618	HILLSBOROUGH	N/A

**DETOUR PLAN (4)
SEGMENT 4**

SHEET NO.
11

THE OFFICIAL RECORD OF THIS SHEET IS THE ELECTRONIC FILE DIGITALLY SIGNED AND SEALED UNDER RULE 61G15-23.004, F.A.C.



LEGEND:

	TRAFFIC FLOW
	WORK AREA
	CONSTRUCTION SIGN
	TYPE I OR TYPE II BARRICADE OR VERTICAL PANEL, DRUM OR CONES PER INDEX 600
	ADVANCE WARNING ARROW 1 ...EL
	TYPE III BARRICADE
	PORTABLE CHANGEABLE (VARIABLE) MESSAGE SIGN
	SELMON EXPRESSWAY (WB) DETOUR ROUTE
	SELMON EXPRESSWAY (EB) DETOUR ROUTE

REVISIONS	
DATE	DESCRIPTION

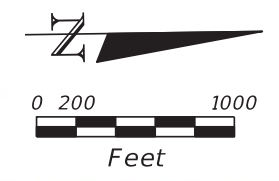
Kisinger Campo & Associates Corp.
 201 N. Franklin Street, Suite 400
 Tampa, Florida 33602
 Florida Certificate of Authorization No. 02317
 Engineer of Record: Darren P. Brandes, P.E.
 P.E. No.: 53982

TAMPA HILLSBOROUGH EXPRESSWAY AUTHORITY		
ROAD NO.	COUNTY	PROJECT ID
618	HILLSBOROUGH	N/A

DETOUR PLAN (5)
SEGMENT 4

SHEET NO.
12

THE OFFICIAL RECORD OF THIS SHEET IS THE ELECTRONIC FILE DIGITALLY SIGNED AND SEALED UNDER RULE 61G15-23.004, F.A.C.



THIS DETOUR SHALL BE IN EFFECT WHEN 50TH STREET BELOW THE SELMON EXPRESSWAY IS CLOSED FOR OVERHEAD WORK. 50TH STREET SHALL NOT BE CLOSED AT ANY OTHER TIME.

THE EASTBOUND SELMON EXPRESSWAY DETOUR (EAST OF 50TH STREET ONLY) SHALL BE USED IN CONJUNCTION WITH THIS DETOUR.

LEGEND:

	TRAFFIC FLOW
	WORK AREA
	CONSTRUCTION SIGN
	TYPE I OR TYPE II BARRICADE OR VERTICAL PANEL, DRUM OR CONES PER INDEX 600
	ADVANCE WARNING ARROW PANEL
	TYPE III BARRICADE
	PORTABLE CHANGEABLE (VARIABLE) MESSAGE SIGN
	50TH STREET SOUTHBOUND
	50TH STREET NORTHBOUND WESTBOUND SELMON X-WAY

REVISIONS			
DATE	DESCRIPTION	DATE	DESCRIPTION

Kisinger Campo & Associates Corp.
 201 N. Franklin Street, Suite 400
 Tampa, Florida 33602
 Florida Certificate of Authorization No. 02317
 Engineer of Record: Darren P. Brandes, P.E.
 P.E. No.: 53982

TAMPA HILLSBOROUGH EXPRESSWAY AUTHORITY		
ROAD NO.	COUNTY	PROJECT ID
618	HILLSBOROUGH	N/A

50TH STREET CLOSURE

DETOUR PLAN (6)
SEGMENT 4

SHEET NO.	13
-----------	----

THE OFFICIAL RECORD OF THIS SHEET IS THE ELECTRONIC FILE DIGITALLY SIGNED AND SEALED UNDER RULE 61G15-23.004, F.A.C.



THIS DETOUR SHALL BE IN EFFECT WHEN 50TH STREET BELOW THE SELMON EXPRESSWAY IS CLOSED FOR OVERHEAD WORK AND SHALL WORK TOGETHER WITH DETOUR DETAIL 3A. 50TH STREET SHALL NOT BE CLOSED AT ANY OTHER TIME.

THE EASTBOUND SELMON EXPRESSWAY DETOUR (EAST OF 50TH STREET ONLY) SHALL BE USED IN CONJUNCTION WITH THIS DETOUR.

LEGEND:

	TRAFFIC FLOW
	WORK AREA
	CONSTRUCTION SIGN
	TYPE I OR TYPE II BARRICADE OR VERTICAL PANEL, DRUM OR CONES PER INDEX 600
	ADVANCE WARNING ARROW PANEL
	TYPE III BARRICADE
	PORTABLE CHANGEABLE (VARIABLE) MESSAGE SIGN
	50TH STREET SOUTHBOUND DETOUR
	50TH STREET NORTHBOUND WESTBOUND SELMON X-WAY
	SELMON X-WAY EB DETOUR

REVISIONS			
DATE	DESCRIPTION	DATE	DESCRIPTION

Kisinger Campo & Associates Corp.
 201 N. Franklin Street, Suite 400
 Tampa, Florida 33602
 Florida Certificate of Authorization No. 02317
 Engineer of Record: Darren P. Brandes, P.E.
 P.E. No.: 53982

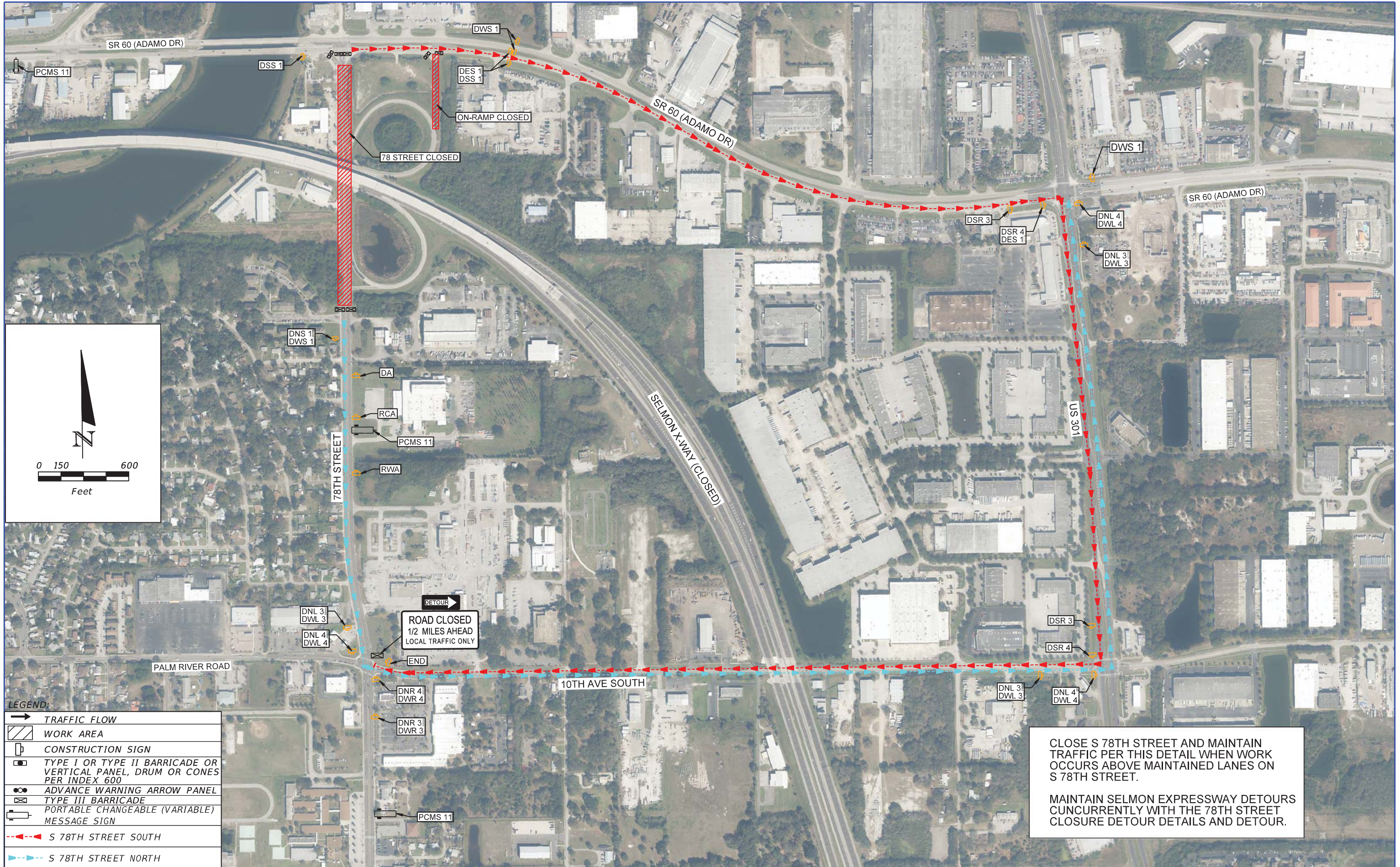
TAMPA HILLSBOROUGH EXPRESSWAY AUTHORITY		
ROAD NO.	COUNTY	PROJECT ID
618	HILLSBOROUGH	N/A

50TH STREET CLOSURE

DETOUR PLAN (7)
SEGMENT 4

SHEET NO.
14

THE OFFICIAL RECORD OF THIS SHEET IS THE ELECTRONIC FILE DIGITALLY SIGNED AND SEALED UNDER RULE 61G15-23.004, F.A.C.



LEGEND:

	TRAFFIC FLOW
	WORK AREA
	CONSTRUCTION SIGN
	TYPE I OR TYPE II BARRICADE OR VERTICAL PANEL, DRUM OR CONES PER INDEX 600
	ADVANCE WARNING ARROW PANEL
	TYPE III BARRICADE
	PORTABLE CHANGEABLE (VARIABLE) MESSAGE SIGN
	S 78TH STREET SOUTH
	S 78TH STREET NORTH

CLOSE S 78TH STREET AND MAINTAIN TRAFFIC PER THIS DETAIL WHEN WORK OCCURS ABOVE MAINTAINED LANES ON S 78TH STREET.

MAINTAIN SELMON EXPRESSWAY DETOURS CUNCURRENTLY WITH THE 78TH STREET CLOSURE DETOUR DETAILS AND DETOUR.

REVISIONS			
DATE	DESCRIPTION	DATE	DESCRIPTION

Kisinger Campo & Associates Corp.
 201 N. Franklin Street, Suite 400
 Tampa, Florida 33602
 Florida Certificate of Authorization No. 02317
 Engineer of Record: Darren P. Brandes, P.E.
 P.E. No.: 53982

TAMPA HILLSBOROUGH EXPRESSWAY AUTHORITY		
ROAD NO.	COUNTY	PROJECT ID
618	HILLSBOROUGH	N/A

DETOUR PLAN (8)
78TH STREET CLOSURE

SHEET NO.
 15



LEGEND:

	TRAFFIC FLOW
	WORK AREA
	CONSTRUCTION SIGN
	TYPE I OR TYPE II BARRICADE OR VERTICAL PANEL, DRUM OR CONES PER INDEX 600
	ADVANCE WARNING ARROW PANEL
	TYPE III BARRICADE
	PORTABLE CHANGEABLE (VARIABLE) MESSAGE SIGN
	SELMON EXPRESSWAY (WB) DETOUR ROUTE
	SELMON EXPRESSWAY (EB) DETOUR ROUTE

REVISIONS			
DATE	DESCRIPTION	DATE	DESCRIPTION

Kisinger Campo & Associates Corp.
 201 N. Franklin Street, Suite 400
 Tampa, Florida 33602
 Florida Certificate of Authorization No. 02317
 Engineer of Record: Darren P. Brandes, P.E.
 P.E. No.: 53982

TAMPA HILLSBOROUGH EXPRESSWAY AUTHORITY

ROAD NO.	COUNTY	PROJECT ID
618	HILLSBOROUGH	N/A

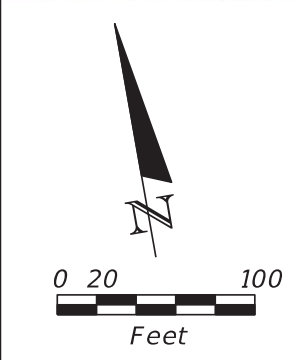
DETOUR DETAIL (1)
 SEGMENT 4

SHEET NO.
 16



LEGEND:

	TRAFFIC FLOW
	WORK AREA
	CONSTRUCTION SIGN
	TYPE I OR TYPE II BARRICADE OR VERTICAL PANEL, DRUM OR CONES PER INDEX 600
	ADVANCE WARNING ARROW PANEL
	TYPE III BARRICADE
	PORTABLE CHANGEABLE (VARIABLE) MESSAGE SIGN
	SELMON EXPRESSWAY (WB) DETOUR ROUTE
	SELMON EXPRESSWAY (EB) DETOUR ROUTE



REVISIONS	
DATE	DESCRIPTION

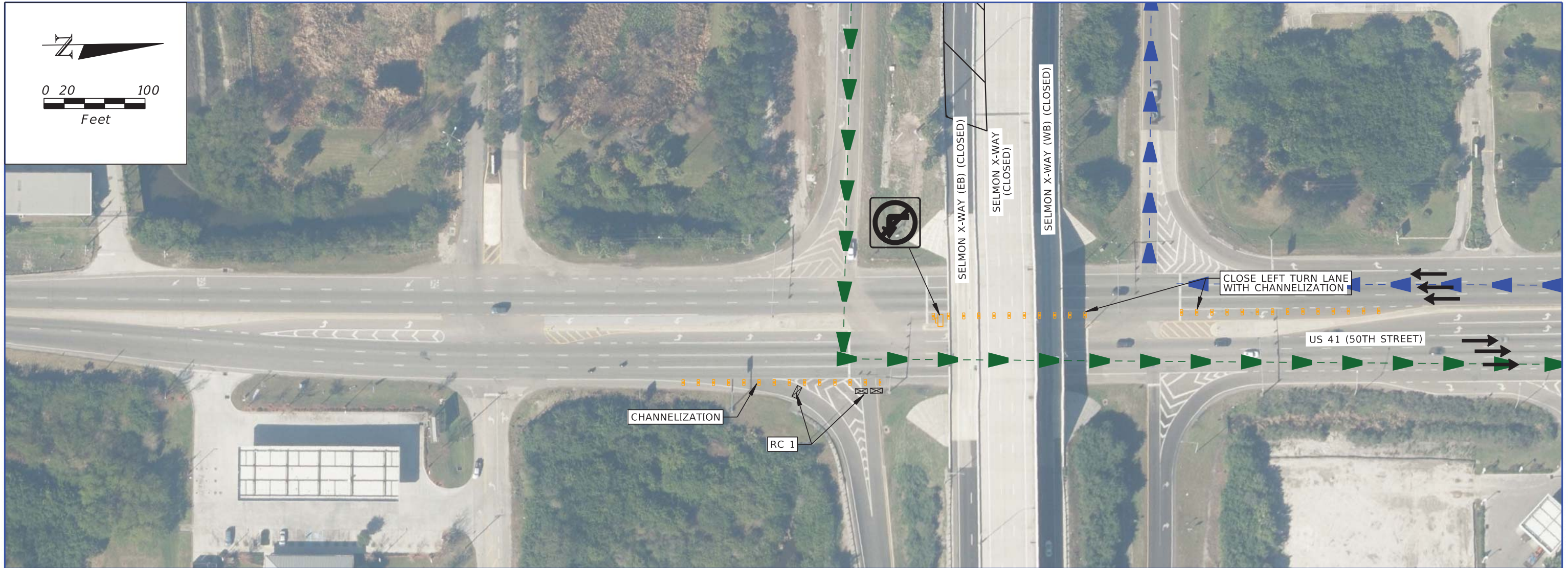
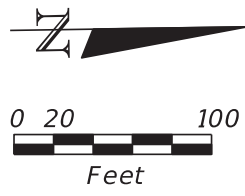
Kisinger Campo & Associates Corp.
 201 N. Franklin Street, Suite 400
 Tampa, Florida 33602
 Florida Certificate of Authorization No. 02317
 Engineer of Record: Darren P. Brandes, P.E.
 P.E. No.: 53982

TAMPA HILLSBOROUGH EXPRESSWAY AUTHORITY		
ROAD NO.	COUNTY	PROJECT ID
618	HILLSBOROUGH	N/A

**DETOUR DETAIL (2)
 SEGMENT 4**

SHEET NO.
 17

THE OFFICIAL RECORD OF THIS SHEET IS THE ELECTRONIC FILE DIGITALLY SIGNED AND SEALED UNDER RULE 61G15-23.004, F.A.C.



LEGEND:

	TRAFFIC FLOW
	WORK AREA
	CONSTRUCTION SIGN
	TYPE I OR TYPE II BARRICADE OR VERTICAL PANEL, DRUM OR CONES PER INDEX 600
	ADVANCE WARNING ARROW PANEL
	TYPE III BARRICADE
	PORTABLE CHANGEABLE (VARIABLE) MESSAGE SIGN
	SELMON EXPRESSWAY (WB) DETOUR ROUTE
	SELMON EXPRESSWAY (EB) DETOUR ROUTE

REVISIONS	
DATE	DESCRIPTION

Kisinger Campo & Associates Corp.
 201 N. Franklin Street, Suite 400
 Tampa, Florida 33602
 Florida Certificate of Authorization No. 02317
 Engineer of Record: Darren P. Brandes, P.E.
 P.E. No.: 53982

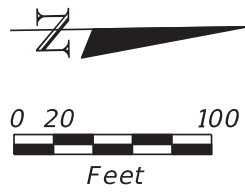
TAMPA HILLSBOROUGH EXPRESSWAY AUTHORITY

ROAD NO.	COUNTY	PROJECT ID
618	HILLSBOROUGH	N/A

DETOUR DETAIL (3)
 SEGMENT 4

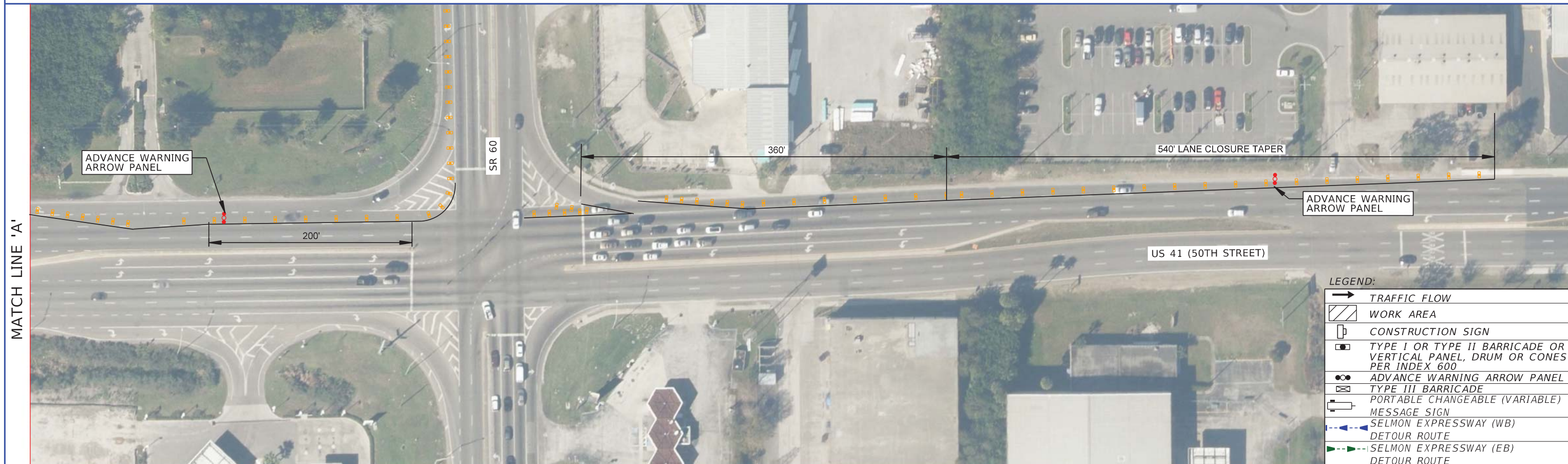
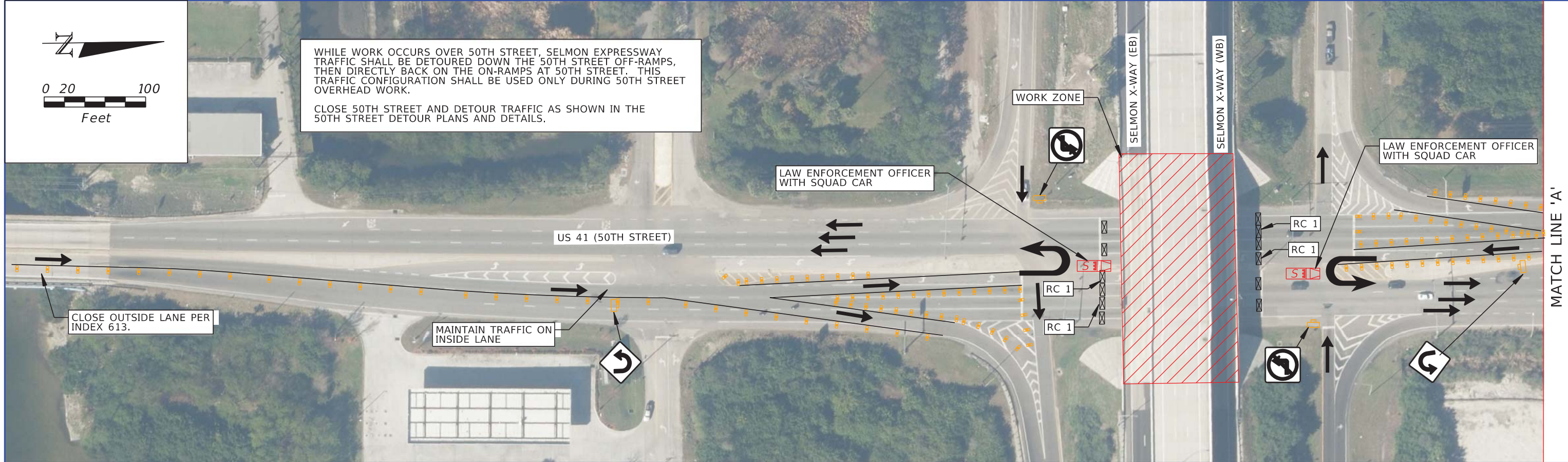
SHEET NO.
 18

THE OFFICIAL RECORD OF THIS SHEET IS THE ELECTRONIC FILE DIGITALLY SIGNED AND SEALED UNDER RULE 61G15-23.004, F.A.C.



WHILE WORK OCCURS OVER 50TH STREET, SELMON EXPRESSWAY TRAFFIC SHALL BE DETOURED DOWN THE 50TH STREET OFF-RAMPS, THEN DIRECTLY BACK ON THE ON-RAMPS AT 50TH STREET. THIS TRAFFIC CONFIGURATION SHALL BE USED ONLY DURING 50TH STREET OVERHEAD WORK.

CLOSE 50TH STREET AND DETOUR TRAFFIC AS SHOWN IN THE 50TH STREET DETOUR PLANS AND DETAILS.



LEGEND:

	TRAFFIC FLOW
	WORK AREA
	CONSTRUCTION SIGN
	TYPE I OR TYPE II BARRICADE OR VERTICAL PANEL, DRUM OR CONES PER INDEX 600
	ADVANCE WARNING ARROW PANEL
	TYPE III BARRICADE
	PORTABLE CHANGEABLE (VARIABLE) MESSAGE SIGN
	SELMON EXPRESSWAY (WB) DETOUR ROUTE
	SELMON EXPRESSWAY (EB) DETOUR ROUTE

REVISIONS			
DATE	DESCRIPTION	DATE	DESCRIPTION

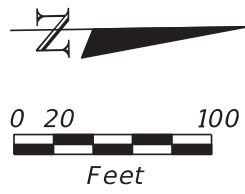
Kisinger Campo & Associates Corp.
 201 N. Franklin Street, Suite 400
 Tampa, Florida 33602
 Florida Certificate of Authorization No. 02317
 Engineer of Record: Darren P. Brandes, P.E.
 P.E. No.: 53982

TAMPA HILLSBOROUGH EXPRESSWAY AUTHORITY		
ROAD NO.	COUNTY	PROJECT ID
618	HILLSBOROUGH	N/A

DETOUR DETAIL (3A)
SEGMENT 4

SHEET NO.
19

THE OFFICIAL RECORD OF THIS SHEET IS THE ELECTRONIC FILE DIGITALLY SIGNED AND SEALED UNDER RULE 61G15-23.004, F.A.C.



LEGEND:

	TRAFFIC FLOW
	WORK AREA
	CONSTRUCTION SIGN
	TYPE I OR TYPE II BARRICADE OR VERTICAL PANEL, DRUM OR CONES PER INDEX 600
	ADVANCE WARNING ARROW PANEL
	TYPE III BARRICADE
	PORTABLE CHANGEABLE (VARIABLE) MESSAGE SIGN
	SELMON EXPRESSWAY (WB) DETOUR ROUTE
	SELMON EXPRESSWAY (EB) DETOUR ROUTE

REVISIONS	
DATE	DESCRIPTION

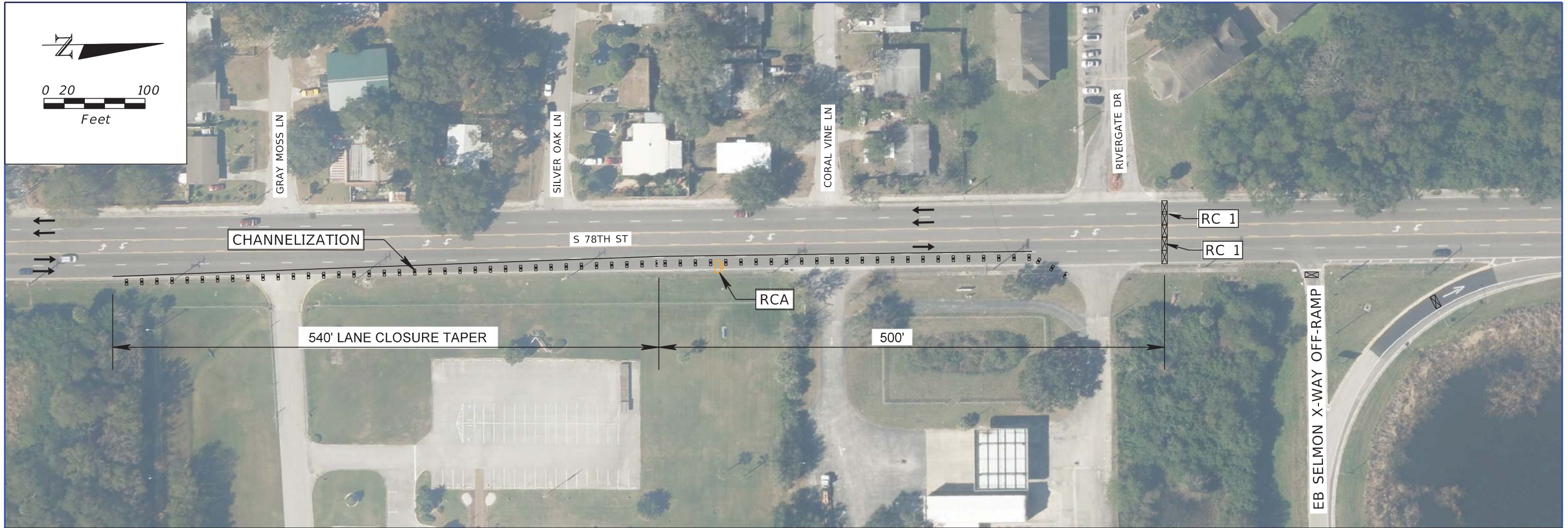
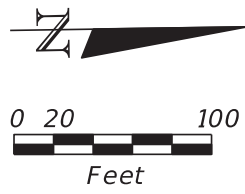
Kisinger Campo & Associates Corp.
 201 N. Franklin Street, Suite 400
 Tampa, Florida 33602
 Florida Certificate of Authorization No. 02317
 Engineer of Record: Darren P. Brandes, P.E.
 P.E. No.: 53982

TAMPA HILLSBOROUGH EXPRESSWAY AUTHORITY		
ROAD NO.	COUNTY	PROJECT ID
618	HILLSBOROUGH	N/A

DETOUR DETAIL (4)
SEGMENT 1

SHEET NO.
20

THE OFFICIAL RECORD OF THIS SHEET IS THE ELECTRONIC FILE DIGITALLY SIGNED AND SEALED UNDER RULE 61G15-23.004, F.A.C.



LEGEND:

	TRAFFIC FLOW
	WORK AREA
	CONSTRUCTION SIGN
	TYPE I OR TYPE II BARRICADE OR VERTICAL PANEL, DRUM OR CONES PER INDEX 600
	ADVANCE WARNING ARROW PANEL
	TYPE III BARRICADE
	PORTABLE CHANGEABLE (VARIABLE) MESSAGE SIGN
	SELMON EXPRESSWAY (WB) DETOUR ROUTE
	SELMON EXPRESSWAY (EB) DETOUR ROUTE

CLOSE S 78TH STREET AND MAINTAIN TRAFFIC PER THIS DETAIL WHEN WORK OCCURS ABOVE MAINTAINED LANES ON S 78TH STREET.

MAINTAIN SELMON EXPRESSWAY DETOURS CONCURRENTLY WITH THE 78TH STREET CLOSURE DETOUR DETAILS AND DETOUR.

REVISIONS			
DATE	DESCRIPTION	DATE	DESCRIPTION

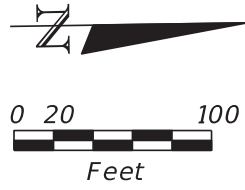
Kisinger Campo & Associates Corp.
 201 N. Franklin Street, Suite 400
 Tampa, Florida 33602
 Florida Certificate of Authorization No. 02317
 Engineer of Record: Darren P. Brandes, P.E.
 P.E. No.: 53982

TAMPA HILLSBOROUGH EXPRESSWAY AUTHORITY

ROAD NO.	COUNTY	PROJECT ID
618	HILLSBOROUGH	N/A

DETOUR DETAIL (4A)
 SEGMENT 4

SHEET NO.
 21



78TH STREET (CLOSED)

78TH STREET (CLOSED)

RC 1

RC 4

COORDINATE WITH PROPERTY OWNER TO CLOSE PROPERTY ACCESS OR ARRANGE RESTRICTED ACCESS

COORDINATE WITH PROPERTY OWNER TO CLOSE PROPERTY ACCESS OR ARRANGE RESTRICTED ACCESS

WORK ZONE

CLOSE S 78TH STREET AND MAINTAIN TRAFFIC PER THIS DETAIL WHEN WORK OCCURS ABOVE MAINTAINED LANES ON S 78TH STREET.
 MAINTAIN SELMON EXPRESSWAY DETOURS CONCURRENTLY WITH THE 78TH STREET CLOSURE DETOUR DETAILS AND DETOUR.

CLOSE AUXILIARY LANE WITH CHANNELIZATION

SR 60 (ADAMO DR)

RC 1

RC 4

LEGEND:

	TRAFFIC FLOW
	WORK AREA
	CONSTRUCTION SIGN
	TYPE I OR TYPE II BARRICADE OR VERTICAL PANEL, DRUM OR CONES PER INDEX 600
	ADVANCE WARNING ARROW PANEL
	TYPE III BARRICADE
	PORTABLE CHANGEABLE (VARIABLE) MESSAGE SIGN
	SELMON EXPRESSWAY (WB) DETOUR ROUTE
	SELMON EXPRESSWAY (EB) DETOUR ROUTE

REVISIONS	
DATE	DESCRIPTION

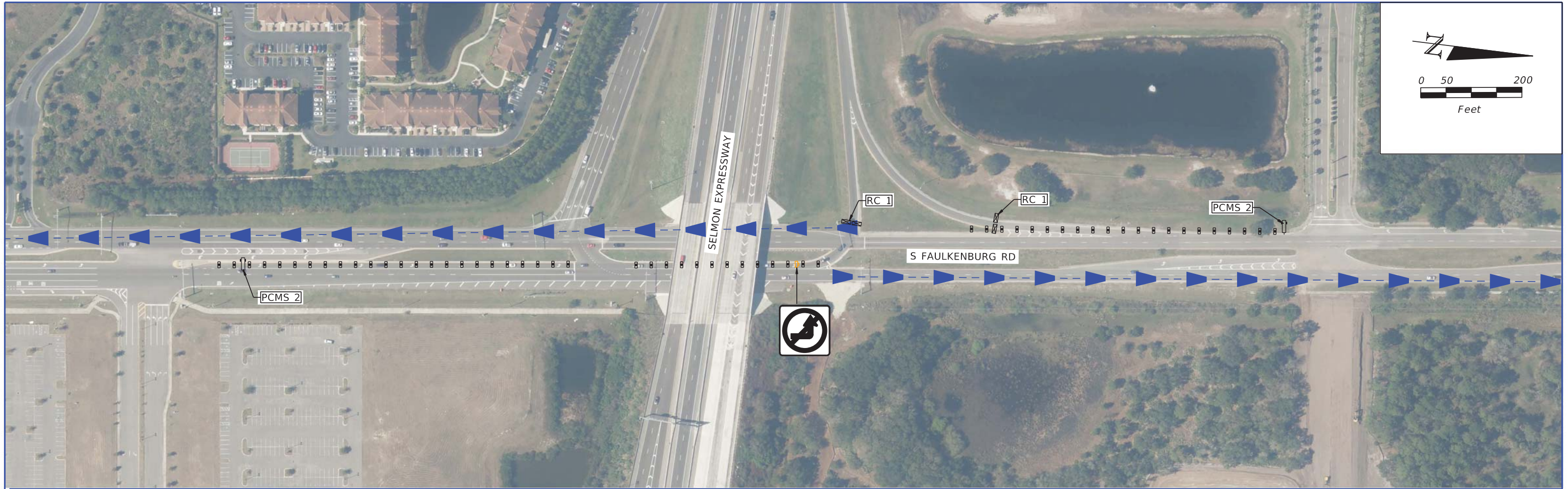
Kisinger Campo & Associates Corp.
 201 N. Franklin Street, Suite 400
 Tampa, Florida 33602
 Florida Certificate of Authorization No. 02317
 Engineer of Record: Darren P. Brandes, P.E.
 P.E. No.: 53982

TAMPA HILLSBOROUGH EXPRESSWAY AUTHORITY		
ROAD NO.	COUNTY	PROJECT ID
618	HILLSBOROUGH	N/A

DETOUR DETAIL (4B)
 SEGMENT 1

SHEET NO.
 22

THE OFFICIAL RECORD OF THIS SHEET IS THE ELECTRONIC FILE DIGITALLY SIGNED AND SEALED UNDER RULE 61G15-23.004, F.A.C.



LEGEND:

	TRAFFIC FLOW
	WORK AREA
	CONSTRUCTION SIGN
	TYPE I OR TYPE II BARRICADE OR VERTICAL PANEL, DRUM OR CONES PER INDEX 600
	ADVANCE WARNING ARROW PANEL
	TYPE III BARRICADE
	PORTABLE CHANGEABLE (VARIABLE) MESSAGE SIGN
	SELMON EXPRESSWAY (WB) DETOUR ROUTE
	SELMON EXPRESSWAY (EB) DETOUR ROUTE

REVISIONS			
DATE	DESCRIPTION	DATE	DESCRIPTION

Kisinger Campo & Associates Corp.
 201 N. Franklin Street, Suite 400
 Tampa, Florida 33602
 Florida Certificate of Authorization No. 02317
 Engineer of Record: Darren P. Brandes, P.E.
 P.E. No.: 53982

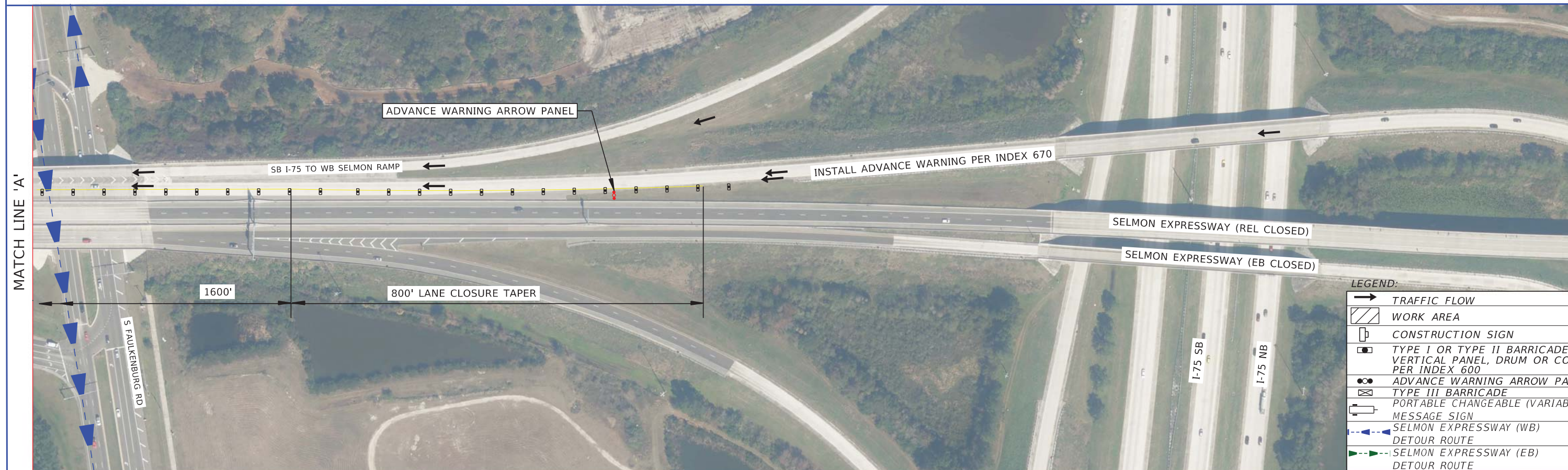
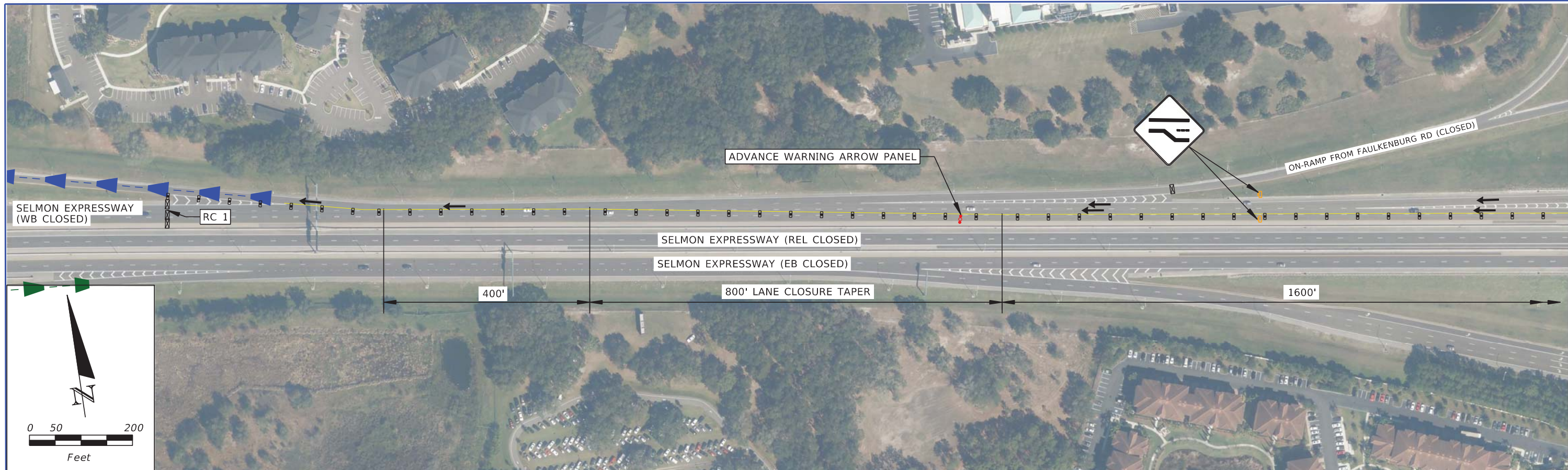
TAMPA HILLSBOROUGH EXPRESSWAY AUTHORITY

ROAD NO.	COUNTY	PROJECT ID
618	HILLSBOROUGH	N/A

**DETOUR DETAIL (5)
 SEGMENT 4**

SHEET NO.
 23

THE OFFICIAL RECORD OF THIS SHEET IS THE ELECTRONIC FILE DIGITALLY SIGNED AND SEALED UNDER RULE 61G15-23.004, F.A.C.



REVISIONS			
DATE	DESCRIPTION	DATE	DESCRIPTION

Kisinger Campo & Associates Corp.
 201 N. Franklin Street, Suite 400
 Tampa, Florida 33602
 Florida Certificate of Authorization No. 02317
 Engineer of Record: Darren P. Brandes, P.E.
 P.E. No.: 53982

TAMPA HILLSBOROUGH EXPRESSWAY AUTHORITY		
ROAD NO.	COUNTY	PROJECT ID
618	HILLSBOROUGH	N/A

DETOUR DETAIL (6)
SEGMENTS 4

SHEET NO. 24

THE OFFICIAL RECORD OF THIS SHEET IS THE ELECTRONIC FILE DIGITALLY SIGNED AND SEALED UNDER RULE 61G15-23.004, F.A.C.