

COMPONENTS OF CONTRACT PLANS SET
DETOUR PLANS

**TAMPA HILLSBOROUGH
EXPRESSWAY AUTHORITY**

CONTRACT PLANS

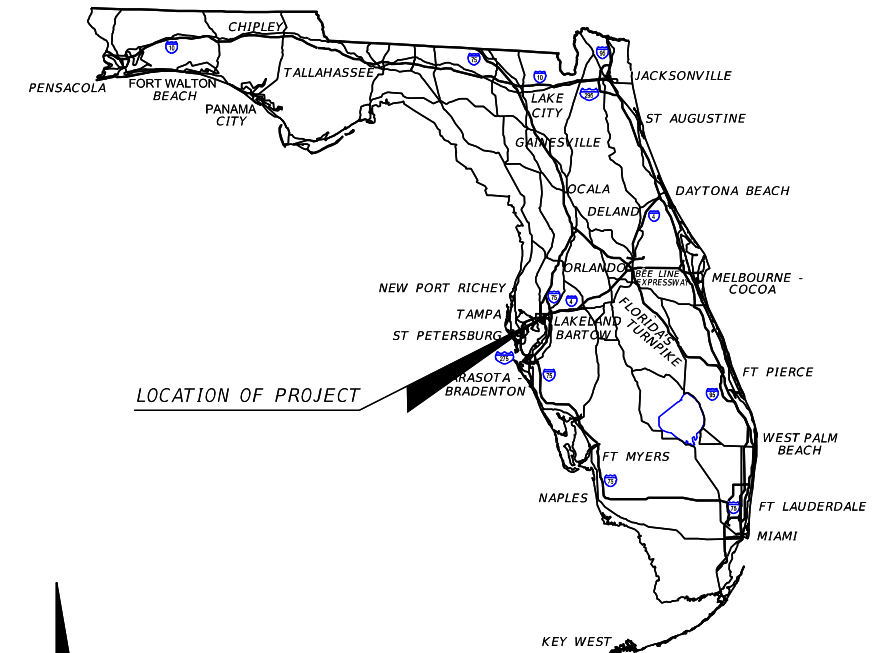
THEA PROJECT ID (N/A)

HILLSBOROUGH COUNTY (10002)

STATE ROAD NO. 618

**SELMON EXPRESSWAY REVERSIBLE EXPRESS LANES (REL)
STRUCTURE POWER WASHING DETOUR PLANS**

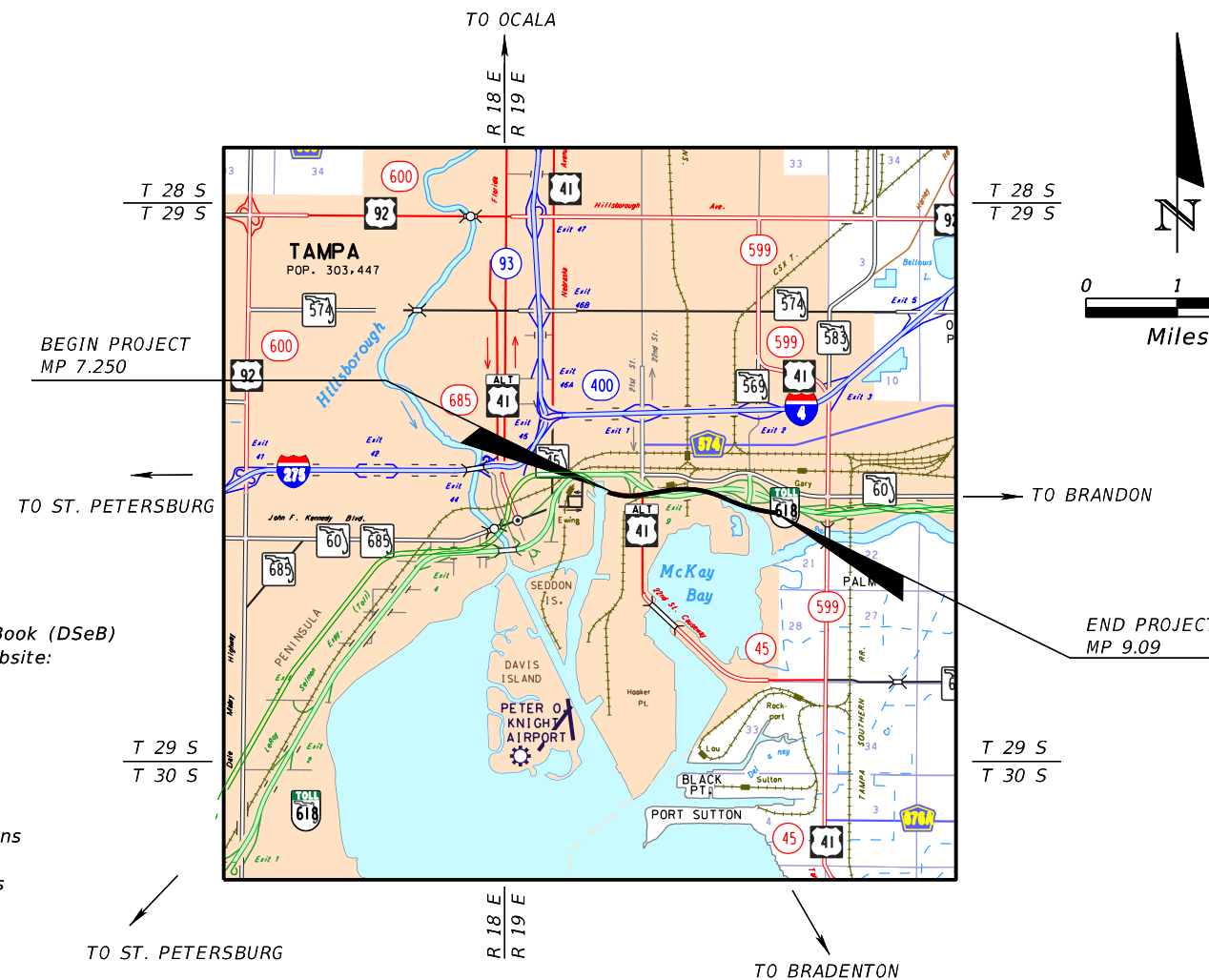
SEGMENT 3



A DETAILED INDEX APPEARS ON THE
KEY SHEET OF EACH COMPONENT

INDEX OF ROADWAY PLANS

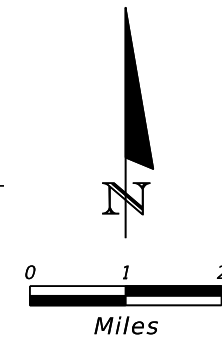
SHEET NO.	SHEET DESCRIPTION
1	KEY SHEET
2	SIGNATURE SHEET
SQ-1	SUMMARY OF QUANTITIES
3	DETOUR NOTES
4	ADVANCE SIGN LAYOUT
5	DETOUR SIGN ASSEMBLY
6	DETOUR LAYOUT
7 - 11	DETOUR PLAN
12 - 17	DETOUR DETAIL



GOVERNING DESIGN STANDARDS:
Florida Department of Transportation, FY 2016-17 Design Standards eBook (DSeB)
and applicable Design Standards Revisions (DSRs) at the following website:
<http://www.dot.state.fl.us/rddesign/DesignStandards/Standards.shtm>

GOVERNING STANDARD SPECIFICATIONS:
Florida Department of Transportation, July 2016 Standard Specifications
for Road and Bridge Construction at the following website:
<http://www.dot.state.fl.us/programmanagement/Implemented/SpecBooks>

REVISIONS:



ROADWAY SHOP DRAWINGS
TO BE SUBMITTED TO:
DARREN P. BRANDES, P.E.
KISINGER CAMPO AND ASSOCIATES CORP.
201 N. FRANKLIN STREET, SUITE 400
TAMPA, FLORIDA 33602

PLANS PREPARED BY:
KISINGER CAMPO AND ASSOCIATES CORP.
CONSULTING ENGINEERS & PLANNERS
201 N. FRANKLIN STREET, SUITE 400
TAMPA, FLORIDA 33602
PHONE: (813) 871-5331
FAX: (813) 871-5135
CERTIFICATE OF AUTHORIZATION No. 02317
VENDOR No. 59-1677145

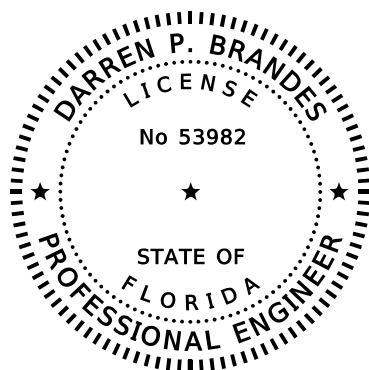
NOTE: THE SCALE OF THESE PLANS MAY
HAVE CHANGED DUE TO REPRODUCTION.

ROADWAY PLANS
ENGINEER OF RECORD: DARREN P. BRANDES, P.E.

P.E. NO.: 53982

FISCAL YEAR	SHEET NO.
16	1

THE OFFICIAL RECORD OF THIS SHEET IS THE ELECTRONIC FILE DIGITALLY SIGNED AND SEALED UNDER RULE 61G15-23.004, F.A.C.



THIS DOCUMENT HAS BEEN DIGITALLY
SIGNED AND SEALED BY:

PRINTED COPIES OF THIS DOCUMENT ARE
NOT CONSIDERED SIGNED AND SEALED.
THE SIGNATURE MUST BE VERIFIED
ON THE ELECTRONIC DOCUMENTS.

KISINGER CAMPO & ASSOCIATES CORP.
201 N. FRANKLIN STREET, SUITE 400
TAMPA, FLORIDA 33602
CERTIFICATE OF AUTHORIZATION NO. 02317
ENGINEER OF RECORD: DARREN P. BRANDES, P.E.
P.E. No.: 53982

THE ABOVE NAMED PROFESSIONAL ENGINEER SHALL BE RESPONSIBLE FOR THE
FOLLOWING SHEETS IN ACCORDANCE WITH RULE 61G15-23.004, F.A.C.

ROADWAY PLANS

<u>SHEET NO.</u>	<u>SHEET DESCRIPTION</u>
1	KEY SHEET
2	SIGNATURE SHEET
SQ-1	SUMMARY OF QUANTITIES
3	DETOUR NOTES
4	ADVANCE SIGN LAYOUT
5	DETOUR SIGN ASSEMBLY
6	DETOUR LAYOUT
7 - 11	DETOUR PLAN
12 - 17	DETOUR DETAIL

<u>REVISIONS</u>				Kisinger Campo & Associates Corp. 201 N. Franklin Street, Suite 400 Tampa, Florida 33602 Florida Certificate of Authorization No. 02317 Engineer of Record: Darren P. Brandes, P.E. P.E. No.: 53982	<i>TAMPA HILLSBOROUGH EXPRESSWAY AUTHORITY</i>			<i>SIGNATURE SHEET</i>	SHEET NO.
<u>DATE</u>	<u>DESCRIPTION</u>	<u>DATE</u>	<u>DESCRIPTION</u>		<u>ROAD NO.</u>	<u>COUNTY</u>	<u>PROJECT ID</u>		2
					618	HILLSBOROUGH	N/A		

SUMMARY OF TEMPORARY TRAFFIC CONTROL PLAN ITEMS

PAY ITEM NO.	PAY ITEM DESCRIPTION	UNIT	SEGMENT 3			SUB-TOTAL		GRAND TOTAL		DESIGN NOTES	CONSTRUCTION REMARKS
			DURATION	QUANTITY	TOTAL	P	F	P	F		
			DAYS	P	P	P	F	P	F		
102-1	MAINTENANCE OF TRAFFIC	LS	20		1	1		1			
102-60	WORK ZONE SIGN	ED	20	312	6240	6240		6240			
102-74-1	CHANNELIZING DEVICE TYPES I, II, DI, VP, DRUM, OR LCD	ED	20	184	3680	3680		3680			
102-74-2	CHANNELIZING DEVICE, TYPE III, 6'	ED	20	16	320	320		320			
102-76	ARROW BOARD/ADVANCE WARNING ARROW PANEL	ED	20	4	80	80		80			
102-99	PORTABLE CHANGEABLE MESSAGE SIGN, TEMPORARY	ED	20	16	320	320		320			
102-150- 1	PORTABLE REGULATORY SIGN	ED	20	4	80	80		80			
102-150- 2	RADAR SPEED DISPLAY UNIT	ED	20	4	80	80		80			

REVISIONS			
DATE	DESCRIPTION	DATE	DESCRIPTION

Kisinger Campo & Associates Corp.
 201 N. Franklin Street, Suite 400
 Tampa, Florida 33602
 Florida Certificate of Authorization No. 02317
 Engineer of Record: Darren P. Brandes, P.E.
 P.E. No.: 53982

**TAMPA HILLSBOROUGH
 EXPRESSWAY AUTHORITY**

ROAD NO.	COUNTY	PROJECT ID
618	HILLSBOROUGH	N/A

SUMMARY OF QUANTITIES (1)

SHEET NO.

SQ-1

THE OFFICIAL RECORD OF THIS SHEET IS THE ELECTRONIC FILE DIGITALLY SIGNED AND SEALED UNDER RULE 61G15-23.004, F.A.C.

TEMPORARY TCP PLAN NOTES

1. LANE CLOSURES AND DETOURS REQUIRED FOR ALL WORK SHALL OCCUR ONLY DURING THE FOLLOWING TIMES:
 - a. LANE CLOSURES ON SR 618 SHALL OCCUR ONLY BETWEEN THE HOURS OF 8:00 PM AND 5:00 AM.
 - b. LANE CLOSURES ON LOCAL STREETS SHALL OCCUR ONLY BETWEEN THE HOURS OF 11:00 PM AND 5:00 AM.
 - c. NO LANE CLOSURES SHALL OCCUR AT ANY TIME BETWEEN 5:00 AM FRIDAY AND 8:00 PM SUNDAY.
 - d. SELMON EXPRESSWAY REL SHALL REMAIN OPEN AT ALL TIMES WITH THE FOLLOWING EXCEPTION: SELMON EXPRESSWAY REL MAY BE CLOSED FOR FIVE CONSECUTIVE NIGHTS DURING SEGMENT 3 DETOURS FOR THE PURPOSES OF CLEANING THE SELMON REL OUTSIDE TRAFFIC RAILING ONLY.
2. PER FDOT SPECIFICATION 8-6.4, SUSPENSION OF CONTRACTORS OPERATIONS: HOLIDAYS AND SPECIAL EVENTS, SPECIAL EVENTS FOR THIS PROJECT INCLUDE: TWO HOURS BEFORE TO TWO HOURS AFTER BUCCANEER HOME GAMES OR OTHER EVENTS WITH A CROWD OF AT LEAST 10,000 TAKING PLACE AT RAYMOND JAMES STADIUM; DURING GASPARILLA, AND GUAVAWEEN.
3. TRAFFIC CONDITIONS, ACCIDENTS AND OTHER UNFORESEEN EMERGENCY CONDITIONS MAY REQUIRE THE ENGINEER TO RESTRICT OR REMOVE LANE CLOSURES OR CHANNELIZATIONS SHOWN IN THE PLANS. THE CONTRACTOR SHALL MAKE THE NECESSARY ADJUSTMENTS, AS DIRECTED BY THE ENGINEER WITHOUT DELAY. THE CONTRACTOR SHALL RESPOND TO ANY REQUESTS MADE BY THE ENGINEER FOR CORRECTION, IMPROVEMENT OR MODIFICATION OF ALL TEMPORARY TRAFFIC CONTROL DEVICES, INCLUDING SIGNALIZATION AND TEMPORARY LIGHTING WITHIN 30 MINUTES FROM THE TIME OF NOTIFICATION.
4. THE CONTRACTOR SHALL NOTIFY ALL EMERGENCY AND RESCUE AGENCIES LOCATED IN THE PROJECT VICINITY AS WELL AS THE ENGINEER IN WRITING 14 DAYS IN ADVANCE OF ANY LANE CLOSURES, DETOURS OR RESTRICTIONS, AND AGAIN 24 HOURS IN ADVANCE.
5. THE EXISTING POSTED SPEED LIMITS ON SR 618 SHALL BE MAINTAINED AT ALL TIMES, EXCEPT DURING LANE CLOSURES PER INDEX 670. THE EXISTING POSTED SPEED LIMITS ON ALL OTHER ROADWAYS SHALL BE MAINTAINED.
6. THE CONTRACTOR SHALL, AT THE DISCRETION OF THE ENGINEER, OPEN ANY TEMPORARY LANE CLOSURE CAUSING EXTENDED TRAFFIC CONGESTION (5 MINUTE DELAY) UNTIL TRAFFIC HAS RETURNED TO AN ACCEPTABLE FLOW AS DETERMINED BY THE ENGINEER.
7. LOCATIONS OF WORK ZONE ACCESS SHALL BE DETERMINED BY THE CONTRACTOR. THE CONTRACTOR SHALL SUBMIT A WRITTEN WORK ZONE ACCESS PLAN FOR EACH WORK ZONE LOCATION FOR APPROVAL BY THE ENGINEER PRIOR TO ACCESSING THE WORK ZONES.
8. THE CONTRACTOR SHALL NOTIFY THE CITY OF TAMPA TRAFFIC ENGINEERING DEPARTMENT AND FDOT TRAFFIC OPERATIONS LIAISON 48 HOURS PRIOR TO ANY TEMPORARY MODIFICATION OF AN EXISTING TRAFFIC SIGNAL.
9. UNIFORMED TRAFFIC CONTROL OFFICERS INCLUDING MARKED LAW ENFORCEMENT VEHICLES SHALL BE USED TO ASSIST IN CONTROLLING AND DIRECTING TRAFFIC WITHIN SIGNALIZED INTERSECTIONS WHEN SIGNALS ARE NOT IN USE OR WHEN TEMPORARY TRAFFIC ALIGNMENT CONFLICTS WITH SIGNAL ALIGNMENT. THE NUMBER OF OFFICERS USED FOR EACH OPERATION SHALL BE APPROVED BY THE ENGINEER. THE COST OF TRAFFIC CONTROL OFFICERS SHALL BE INCLUDED IN PAY ITEM 102-14 ONLY WHEN THEY ARE USED FOR THE PURPOSE DESCRIBED IN THIS NOTE AND WHEN THEY ARE ACTIVELY ENGAGED IN THAT ACTIVITY. COSTS FOR TRAFFIC CONTROL OFFICERS USED FOR ANY OTHER PURPOSE SHALL BE THE RESPONSIBILITY OF THE CONTRACTOR.
10. NO POWER WASHING IS ALLOWED WHILE TRAIN IS PASSING UNDER SELMON EXPRESSWAY.
11. INDEX 670 SHALL BE UTILIZED FOR ALL LANE CLOSURES ON SR 618 AND I-4/SELMON CONNECTOR.
12. CITY OF TAMPA RIGHT-OF-WAY PERMITS WILL BE REQUIRED WHENEVER CITY OWNED STREETS ARE USED FOR WORK ZONE TRAFFIC CONTROL, CLOSURES, OR DETOURS. THE CONTRACTOR IS ADVISED TO REVIEW THE PERMIT APPLICATION REQUIREMENTS PRIOR TO BID. THE PERMIT APPLICATION CAN BE FOUND AT <http://www.tampagov.net/planning-division/right-way-permits>

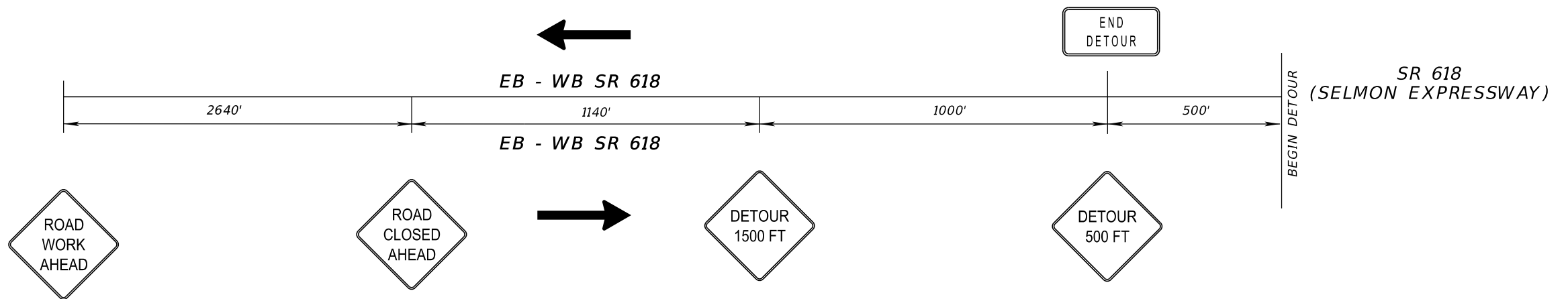
MAINTAIN SPACING OF ALL CHANNELIZATION DEVICES FOR ALL LANE CLOSURES AND DETOURS PER TABLE I BELOW

Table I Device Spacing				
Speed (mph)	Max. Distance Between Devices (ft.)			
	Cones or Tubular Markers		Type I or Type II Barricades or Vertical Panels or Drums	
	Taper	Tangent	Taper	Tangent
25	25	50	25	50
30 to 45	25	50	30	50
50 to 70	25	50	50	100

REVISIONS				Kisinger Campo & Associates Corp. 201 N. Franklin Street, Suite 400 Tampa, Florida 33602 Florida Certificate of Authorization No. 02317 Engineer of Record: Darren P. Brandes, P.E. P.E. No.: 53982	TAMPA HILLSBOROUGH EXPRESSWAY AUTHORITY			SHEET NO. 3
DATE	DESCRIPTION	DATE	DESCRIPTION		ROAD NO.	COUNTY	PROJECT ID	
					618	HILLSBOROUGH	N/A	

DETOUR NOTES (1)

THE OFFICIAL RECORD OF THIS SHEET IS THE ELECTRONIC FILE DIGITALLY SIGNED AND SEALED UNDER RULE 61G15-23.004, F.A.C.



SELMON EXPRESSWAY SIGN LAYOUT

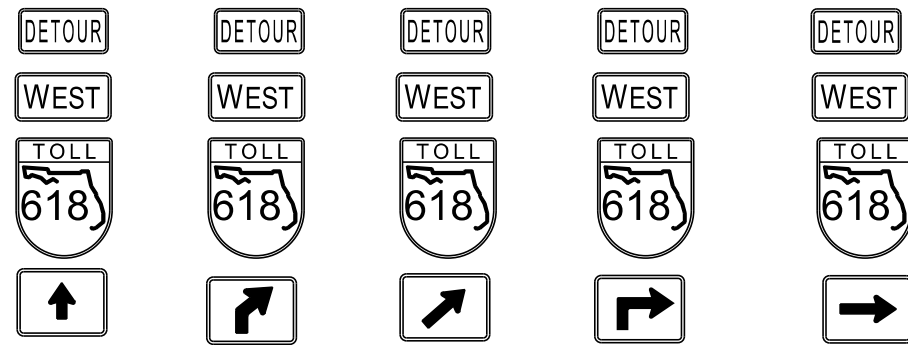
ADVANCE SIGN LAYOUT TO BE PLACED ON SELMON EXPRESSWAY (EB AND WB) IN ADVANCE OF DETOUR AND ON THE I-4/SELMON EXPRESSWAY CONNECTOR IN ADVANCE OF DETOUR. SIGNS TO BE USED IN CONJUNCTION WITH INDEX 670 SIGNS.

PCMS MESSAGES

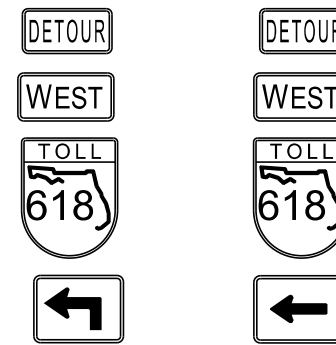
- MESSAGE 1: SR 618 ROAD WORK, BEGINS < DAY > (7 DAYS PRIOR TO ACTIVE WORK, LOCATE 1 PCMS ON EB SR 618 IN THE GORE AREA AT EXIT 6A. LOCATE 1 PCMS ON WB SR 618 WITHIN THE GORE AREA AT EXIT 11. LOCATE 1 PCMS AT GORE AREA ON I-4/SELMON CONNECTOR SOUTH OF TOLL STRUCTURE AT "WEST DOWNTOWN" EXIT.)
- MESSAGE 2 (EB): LEFT (2) LANE(S) CLOSED, MERGE RIGHT (DURING LANE CLOSURE EASTBOUND, LOCATE 800 FT. IN ADVANCE OF W20-5A SIGN. THIS PCMS IS IN ADDITION TO PCMS SHOWN IN INDEX 670.)
- MESSAGE 3 (WB): LEFT LANE CLOSED, MERGE RIGHT (DURING LANE CLOSURE WESTBOUND, LOCATE 800 FT. IN ADVANCE OF W20-5L SIGN. THIS PCMS IS IN ADDITION TO PCMS SHOWN IN INDEX 670.)

LANE CLOSURES:
INSTALL THE MOTORIST AWARENESS SYSTEM AND ALL ADVANCE WARNING SIGNS FOR ALL LANE CLOSURES ON SR 618 AS SHOWN IN INDEX 670.

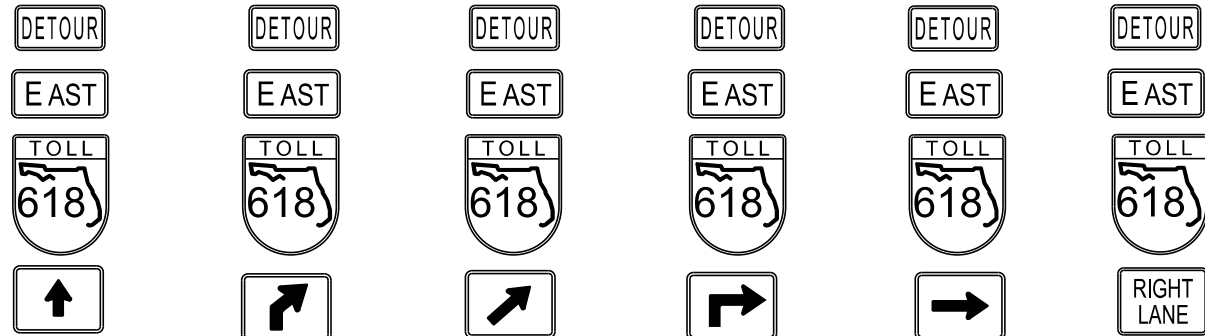
REVISIONS				Kisinger Campo & Associates Corp. 201 N. Franklin Street, Suite 400 Tampa, Florida 33602 Florida Certificate of Authorization No. 02317 Engineer of Record: Darren P. Brandes, P.E. P.E. No.: 53982	TAMPA HILLSBOROUGH EXPRESSWAY AUTHORITY			ADVANCE SIGN LAYOUT	SHEET NO.
DATE	DESCRIPTION	DATE	DESCRIPTION		ROAD NO.	COUNTY	PROJECT ID		
					618	HILLSBOROUGH	N/A		



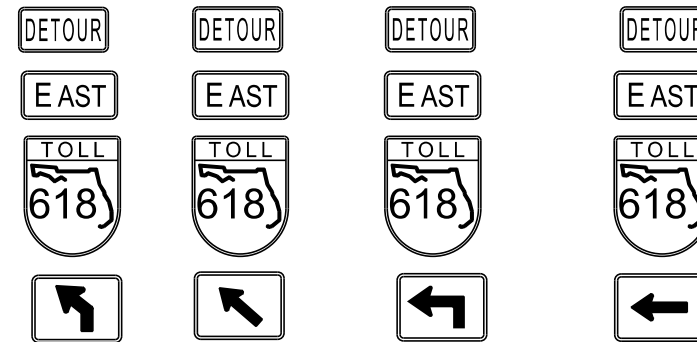
DWS 1 DWR 1 DWR 2 DWR 3 DWR 4



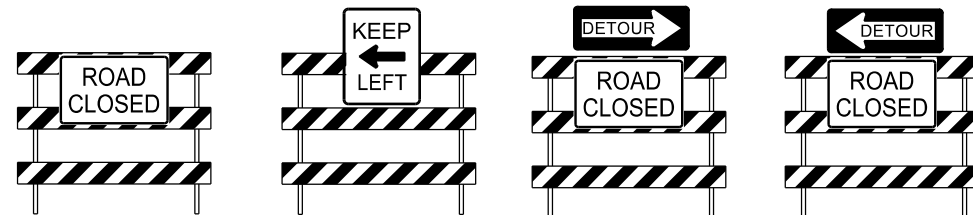
DWL 3 DWL 4



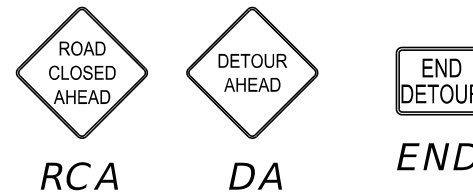
DES 1 DER 1A DER 2A DER 3 DER 4 DER 5



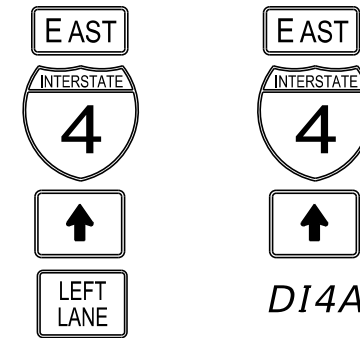
DEL 1 DEL 2 DEL 3 DEL 4



RC 1 RC 2 RC 3 RC 4



RCA DA END



DI4 DI4A



PCMS 1 PCMS 2 PCMS 3 PCMS 4 PCMS 5 PCMS 6 PCMS 7 PCMS 8 PCMS 9

REVISIONS			
DATE	DESCRIPTION	DATE	DESCRIPTION

Kisinger Campo & Associates Corp.
 201 N. Franklin Street, Suite 400
 Tampa, Florida 33602
 Florida Certificate of Authorization No. 02317
 Engineer of Record: Darren P. Brandes, P.E.
 P.E. No.: 53982

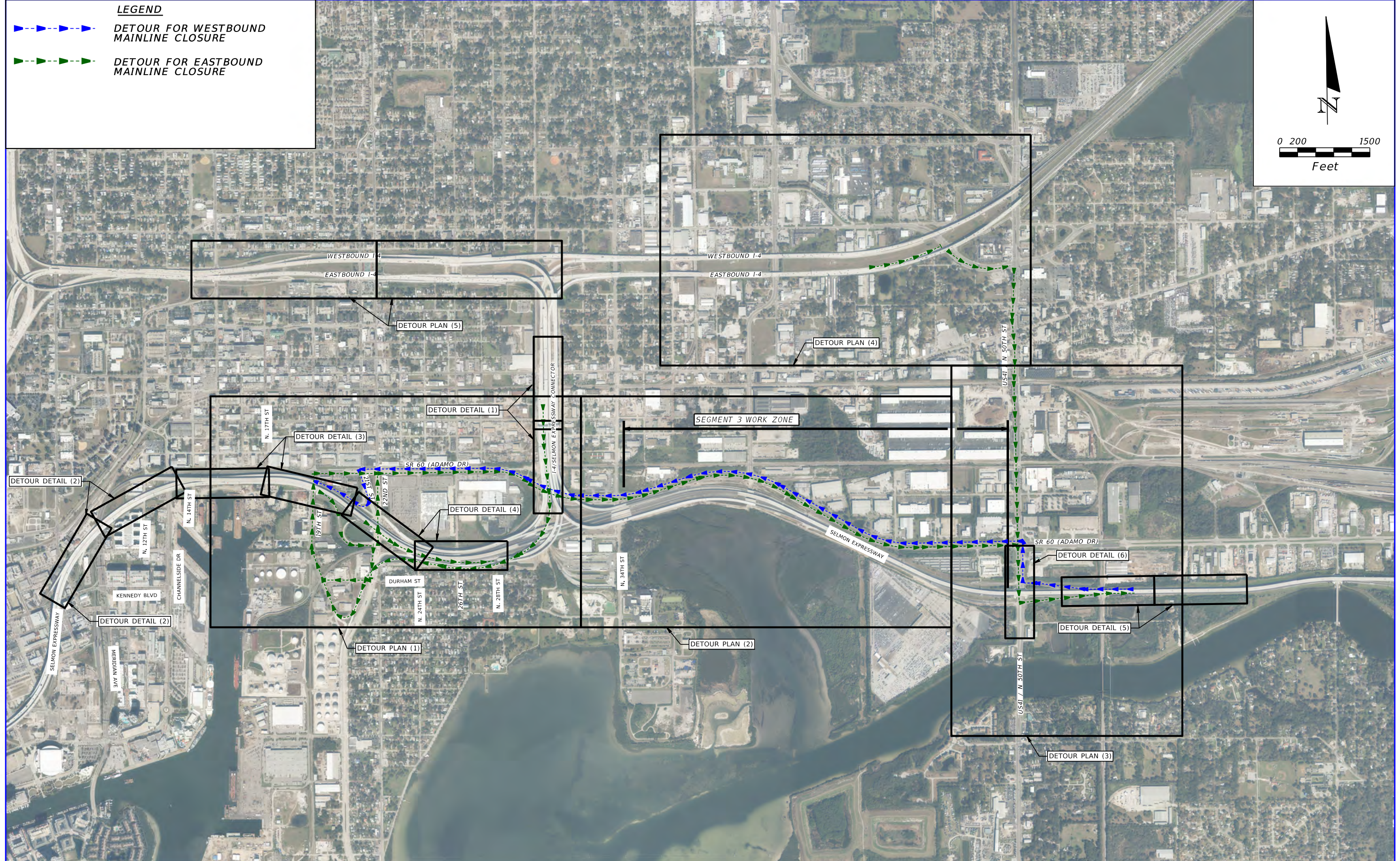
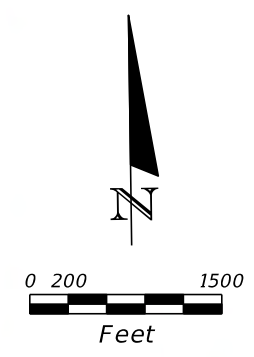
TAMPA HILLSBOROUGH EXPRESSWAY AUTHORITY		
ROAD NO.	COUNTY	PROJECT ID
618	HILLSBOROUGH	N/A

DETOUR SIGN ASSEMBLY (1)
SR 618 DETOURS

SHEET NO.
 5

LEGEND

-  DETOUR FOR WESTBOUND MAINLINE CLOSURE
-  DETOUR FOR EASTBOUND MAINLINE CLOSURE



REVISIONS			
DATE	DESCRIPTION	DATE	DESCRIPTION

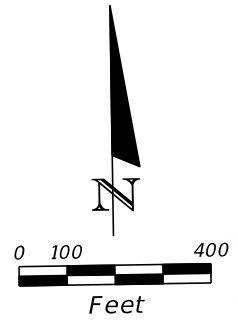
Kisinger Campo & Associates Corp.
 201 N. Franklin Street, Suite 400
 Tampa, Florida 33602
 Florida Certificate of Authorization No. 02317
 Engineer of Record: Darren P. Brandes, P.E.
 P.E. No.: 53982

TAMPA - HILLSBOROUGH COUNTY EXPRESSWAY AUTHORITY		
ROAD NO.	COUNTY	FINANCIAL PROJECT ID
SR 618	HILLSBOROUGH	N/A

**TEMPORARY TRAFFIC CONTROL
 SEGMENT 3 LAYOUT**

SHEET NO.
6

THE OFFICIAL RECORD OF THIS SHEET IS THE ELECTRONIC FILE DIGITALLY SIGNED AND SEALED UNDER RULE 61G15-23.004, F.A.C.



LEGEND:

	TRAFFIC FLOW
	WORK AREA
	CONSTRUCTION SIGN
	TYPE I OR TYPE II BARRICADE OR VERTICAL PANEL, DRUM OR CONES PER INDEX 600
	ADVANCE WARNING ARROW PANEL
	TYPE III BARRICADE
	PORTABLE CHANGEABLE (VARIABLE) MESSAGE SIGN
	SELMON EXPRESSWAY (WB) DETOUR ROUTE
	SELMON EXPRESSWAY (EB) DETOUR ROUTE

REVISIONS			
DATE	DESCRIPTION	DATE	DESCRIPTION

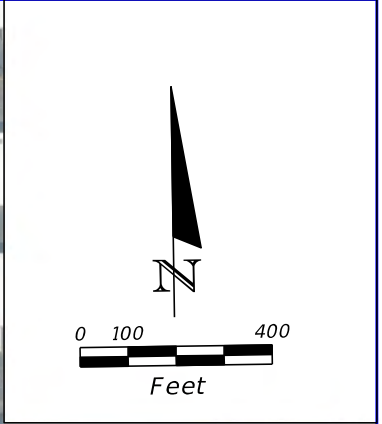
Kisinger Campo & Associates Corp.
 201 N. Franklin Street, Suite 400
 Tampa, Florida 33602
 Florida Certificate of Authorization No. 02317
 Engineer of Record: Darren P. Brandes, P.E.
 P.E. No.: 53982

TAMPA HILLSBOROUGH EXPRESSWAY AUTHORITY		
ROAD NO.	COUNTY	PROJECT ID
618	HILLSBOROUGH	N/A

DETOUR PLAN (1)
SEGMENT 3

SHEET NO.
7

THE OFFICIAL RECORD OF THIS SHEET IS THE ELECTRONIC FILE DIGITALLY SIGNED AND SEALED UNDER RULE 61G15-23.004, F.A.C.



LEGEND:

	TRAFFIC FLOW
	WORK AREA
	CONSTRUCTION SIGN
	TYPE I OR TYPE II BARRICADE OR VERTICAL PANEL, DRUM OR CONES PER INDEX 600
	ADVANCE WARNING ARROW PANEL
	TYPE III BARRICADE
	PORTABLE CHANGEABLE (VARIABLE) MESSAGE SIGN
	SELMON EXPRESSWAY (WB) DETOUR ROUTE
	SELMON EXPRESSWAY (EB) DETOUR ROUTE

REVISIONS			
DATE	DESCRIPTION	DATE	DESCRIPTION

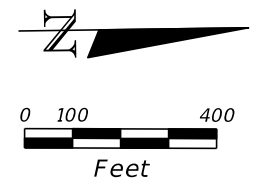
Kisinger Campo & Associates Corp.
 201 N. Franklin Street, Suite 400
 Tampa, Florida 33602
 Florida Certificate of Authorization No. 02317
 Engineer of Record: Darren P. Brandes, P.E.
 P.E. No.: 53982

TAMPA HILLSBOROUGH EXPRESSWAY AUTHORITY		
ROAD NO.	COUNTY	PROJECT ID
618	HILLSBOROUGH	N/A

DETOUR PLAN (2)
SEGMENT 3

SHEET NO.
 8

THE OFFICIAL RECORD OF THIS SHEET IS THE ELECTRONIC FILE DIGITALLY SIGNED AND SEALED UNDER RULE 61G15-23.004, F.A.C.



LEGEND:

	TRAFFIC FLOW
	WORK AREA
	CONSTRUCTION SIGN
	TYPE I OR TYPE II BARRICADE OR VERTICAL PANEL, DRUM OR CONES PER INDEX 600
	ADVANCE WARNING ARROW PANEL
	TYPE III BARRICADE
	PORTABLE CHANGEABLE (VARIABLE) MESSAGE SIGN
	SELMON EXPRESSWAY (WB) DETOUR ROUTE
	SELMON EXPRESSWAY (EB) DETOUR ROUTE

REVISIONS	
DATE	DESCRIPTION

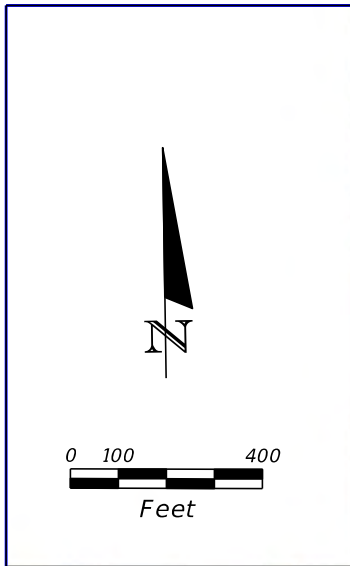
Kisinger Campo & Associates Corp.
 201 N. Franklin Street, Suite 400
 Tampa, Florida 33602
 Florida Certificate of Authorization No. 02317
 Engineer of Record: Darren P. Brandes, P.E.
 P.E. No.: 53982

TAMPA HILLSBOROUGH EXPRESSWAY AUTHORITY		
ROAD NO.	COUNTY	PROJECT ID
618	HILLSBOROUGH	N/A

DETOUR PLAN (3)
SEGMENT 3

SHEET NO.
 9

THE OFFICIAL RECORD OF THIS SHEET IS THE ELECTRONIC FILE DIGITALLY SIGNED AND SEALED UNDER RULE 61G15-23.004, F.A.C.



LEGEND:

	TRAFFIC FLOW
	WORK AREA
	CONSTRUCTION SIGN
	TYPE I OR TYPE II BARRICADE OR VERTICAL PANEL, DRUM OR CONES PER INDEX 600
	ADVANCE WARNING ARROW PANEL
	TYPE III BARRICADE
	PORTABLE CHANGEABLE (VARIABLE) MESSAGE SIGN
	SELMON EXPRESSWAY (WB)
	DETOUR ROUTE
	SELMON EXPRESSWAY (EB)
	DETOUR ROUTE

REVISIONS	
DATE	DESCRIPTION

Kisinger Campo & Associates Corp.
 201 N. Franklin Street, Suite 400
 Tampa, Florida 33602
 Florida Certificate of Authorization No. 02317
 Engineer of Record: Darren P. Brandes, P.E.
 P.E. No.: 53982

TAMPA HILLSBOROUGH EXPRESSWAY AUTHORITY		
ROAD NO.	COUNTY	PROJECT ID
618	HILLSBOROUGH	N/A

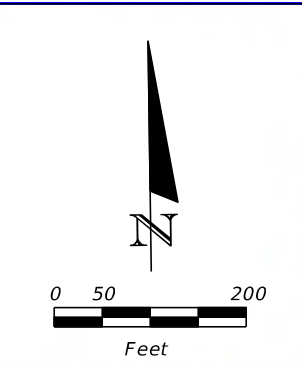
DETOUR PLAN (4)
SEGMENT 3

SHEET NO.
 10

THE OFFICIAL RECORD OF THIS SHEET IS THE ELECTRONIC FILE DIGITALLY SIGNED AND SEALED UNDER RULE 61G15-23.004, F.A.C.

LEGEND:

- TRAFFIC FLOW
- ▨ WORK AREA
- ☐ CONSTRUCTION SIGN
- ☐ TYPE I OR TYPE II BARRICADE OR VERTICAL PANEL, DRUM OR CONES PER INDEX 600
- ☐ ADVANCE WARNING ARROW PANEL
- ☐ TYPE III BARRICADE
- ☐ PORTABLE CHANGEABLE (VARIABLE) MESSAGE SIGN
- SELMON EXPRESSWAY (WB) DETOUR ROUTE
- SELMON EXPRESSWAY (EB) DETOUR ROUTE



REVISIONS			
DATE	DESCRIPTION	DATE	DESCRIPTION

Kisinger Campo & Associates Corp.
 201 N. Franklin Street, Suite 400
 Tampa, Florida 33602
 Florida Certificate of Authorization No. 02317
 Engineer of Record: Darren P. Brandes, P.E.
 P.E. No.: 53982

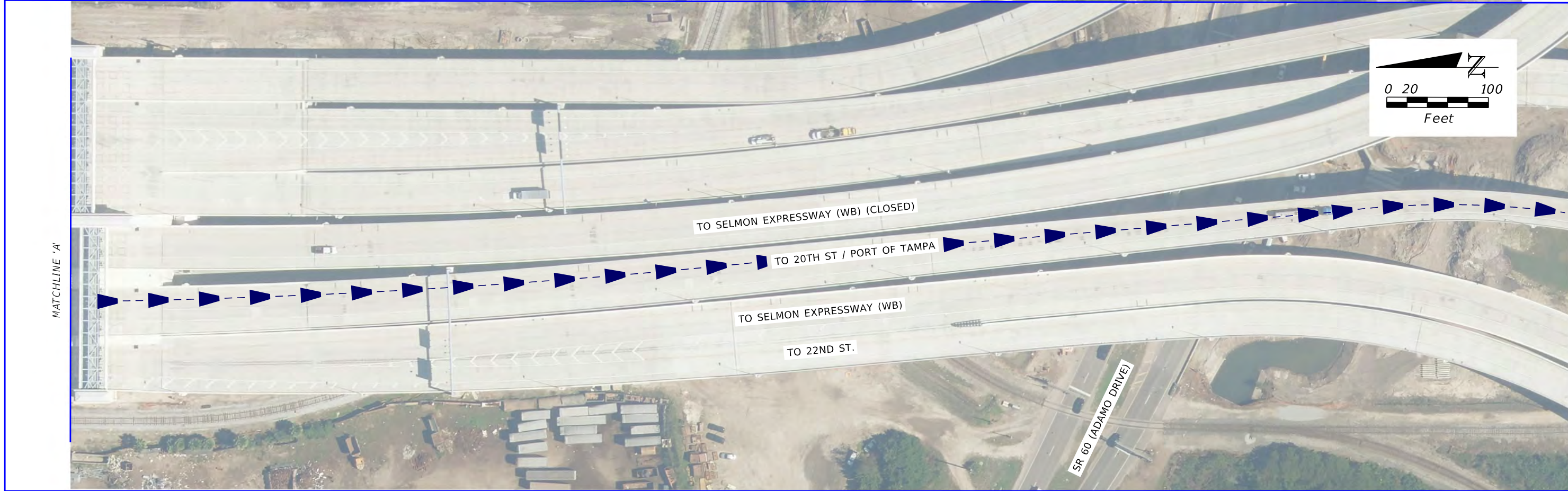
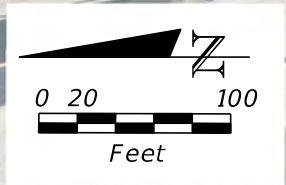
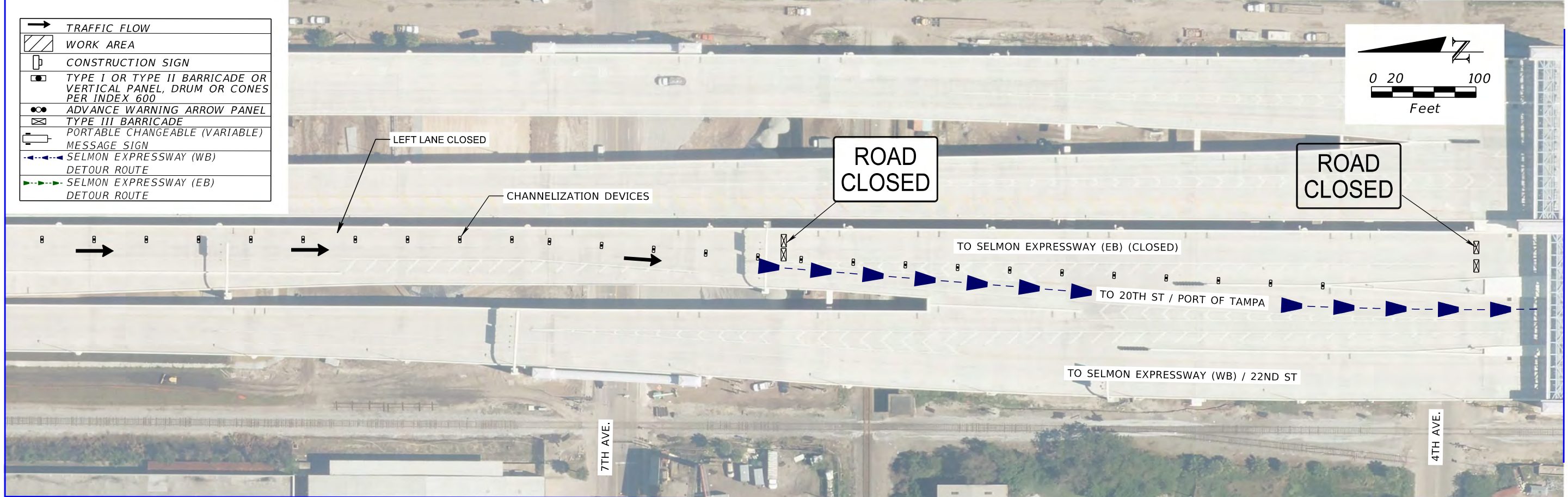
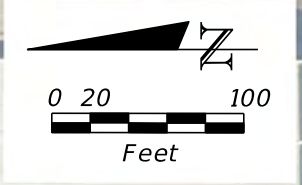
TAMPA HILLSBOROUGH EXPRESSWAY AUTHORITY		
ROAD NO.	COUNTY	PROJECT ID
618	HILLSBOROUGH	N/A

**DETOUR PLAN (5)
 SEGMENT 3**

SHEET NO.
 11

THE OFFICIAL RECORD OF THIS SHEET IS THE ELECTRONIC FILE DIGITALLY SIGNED AND SEALED UNDER RULE 61G15-23.004, F.A.C.

	TRAFFIC FLOW
	WORK AREA
	CONSTRUCTION SIGN
	TYPE I OR TYPE II BARRICADE OR VERTICAL PANEL, DRUM OR CONES PER INDEX 600
	ADVANCE WARNING ARROW PANEL
	TYPE III BARRICADE
	PORTABLE CHANGEABLE (VARIABLE) MESSAGE SIGN
	SELMON EXPRESSWAY (WB) DETOUR ROUTE
	SELMON EXPRESSWAY (EB) DETOUR ROUTE



REVISIONS			
DATE	DESCRIPTION	DATE	DESCRIPTION

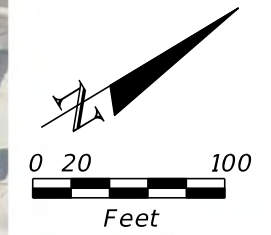
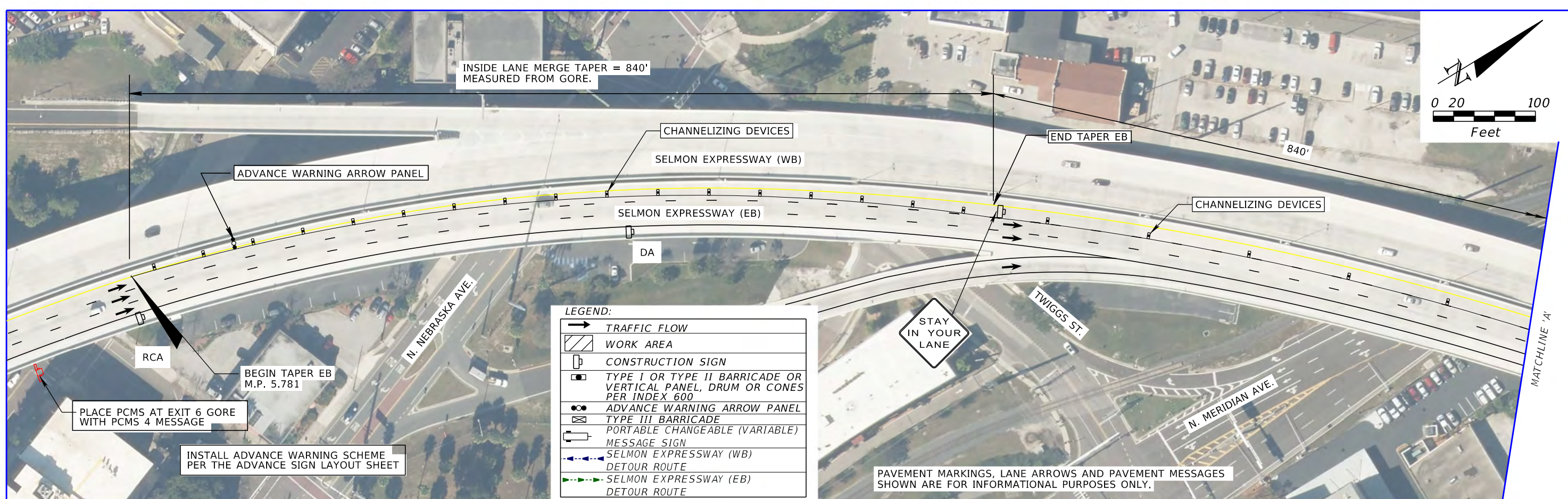
Kisinger Campo & Associates Corp.
 201 N. Franklin Street, Suite 400
 Tampa, Florida 33602
 Florida Certificate of Authorization No. 02317
 Engineer of Record: Darren P. Brandes, P.E.
 P.E. No.: 53982

TAMPA HILLSBOROUGH EXPRESSWAY AUTHORITY		
ROAD NO.	COUNTY	PROJECT ID
618	HILLSBOROUGH	N/A

DETOUR DETAIL (1)
SEGMENT 3

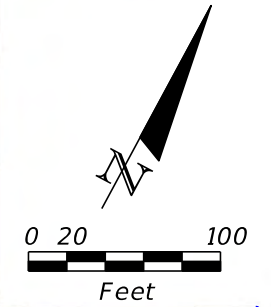
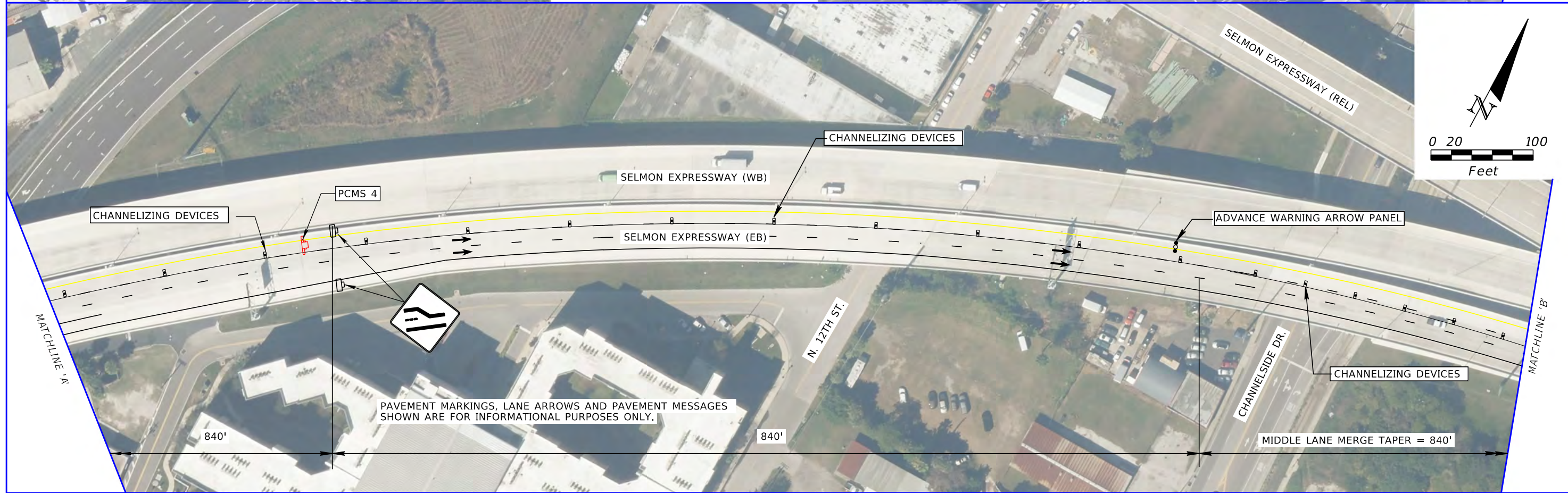
SHEET NO.
 12

THE OFFICIAL RECORD OF THIS SHEET IS THE ELECTRONIC FILE DIGITALLY SIGNED AND SEALED UNDER RULE 61G15-23.004, F.A.C.



LEGEND:

→	TRAFFIC FLOW
▨	WORK AREA
□	CONSTRUCTION SIGN
■	TYPE I OR TYPE II BARRICADE OR VERTICAL PANEL, DRUM OR CONES PER INDEX 600
⬇	ADVANCE WARNING ARROW PANEL
⊠	TYPE III BARRICADE
⊞	PORTABLE CHANGEABLE (VARIABLE) MESSAGE SIGN
→	SELMON EXPRESSWAY (WB) DETOUR ROUTE
→	SELMON EXPRESSWAY (EB) DETOUR ROUTE



REVISIONS			
DATE	DESCRIPTION	DATE	DESCRIPTION

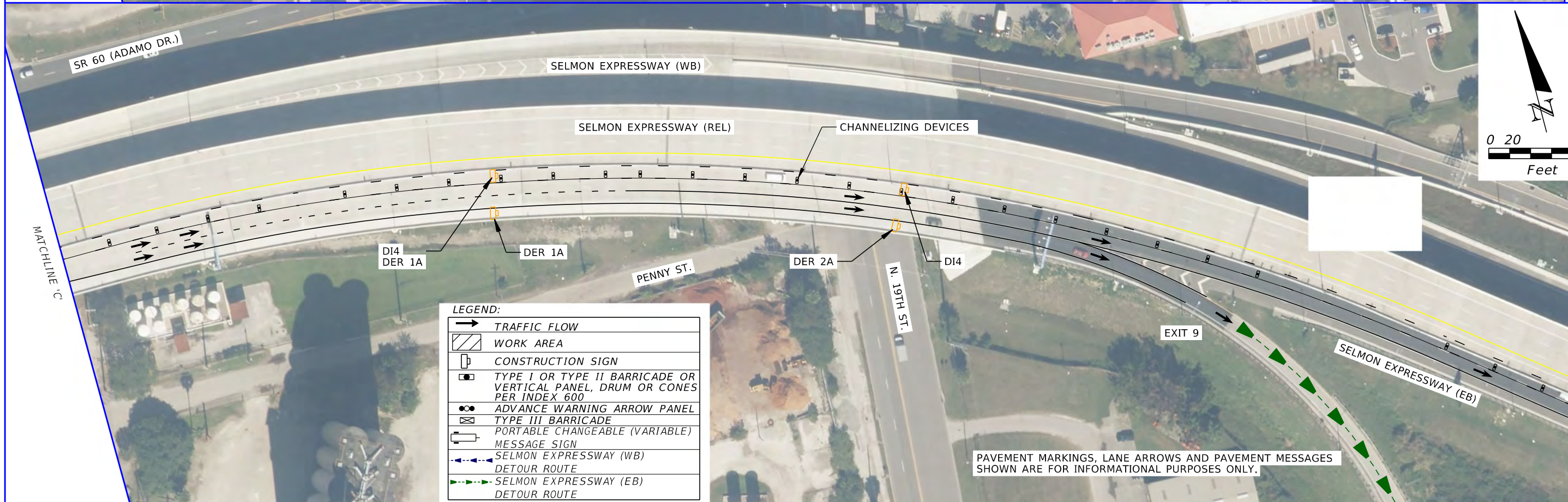
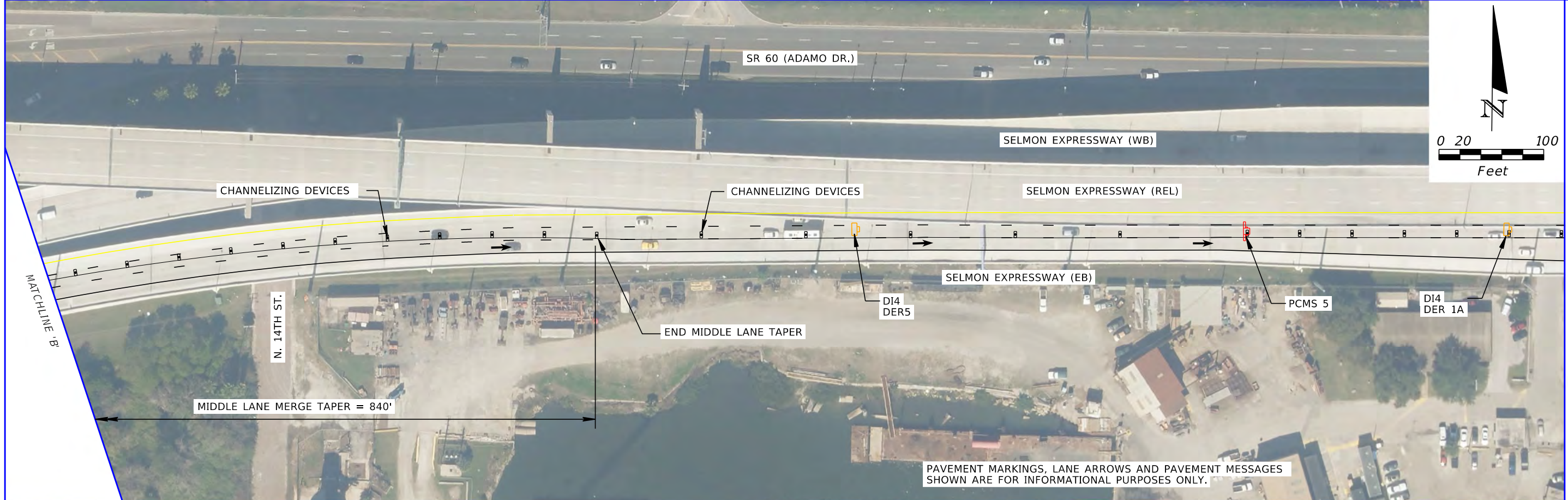
Kisinger Campo & Associates Corp.
 201 N. Franklin Street, Suite 400
 Tampa, Florida 33602
 Florida Certificate of Authorization No. 02317
 Engineer of Record: Darren P. Brandes, P.E.
 P.E. No.: 53982

TAMPA HILLSBOROUGH EXPRESSWAY AUTHORITY		
ROAD NO.	COUNTY	PROJECT ID
618	HILLSBOROUGH	N/A

DETOUR DETAIL (2)
SEGMENT 3

SHEET NO.
 13

THE OFFICIAL RECORD OF THIS SHEET IS THE ELECTRONIC FILE DIGITALLY SIGNED AND SEALED UNDER RULE 61G15-23.004, F.A.C.



LEGEND:

	TRAFFIC FLOW
	WORK AREA
	CONSTRUCTION SIGN
	TYPE I OR TYPE II BARRICADE OR VERTICAL PANEL, DRUM OR CONES PER INDEX 600
	ADVANCE WARNING ARROW PANEL
	TYPE III BARRICADE
	PORTABLE CHANGEABLE (VARIABLE) MESSAGE SIGN
	SELMON EXPRESSWAY (WB) DETOUR ROUTE
	SELMON EXPRESSWAY (EB) DETOUR ROUTE

REVISIONS			
DATE	DESCRIPTION	DATE	DESCRIPTION

Kisinger Campo & Associates Corp.
 201 N. Franklin Street, Suite 400
 Tampa, Florida 33602
 Florida Certificate of Authorization No. 02317
 Engineer of Record: Darren P. Brandes, P.E.
 P.E. No.: 53982

TAMPA HILLSBOROUGH EXPRESSWAY AUTHORITY		
ROAD NO.	COUNTY	PROJECT ID
618	HILLSBOROUGH	N/A

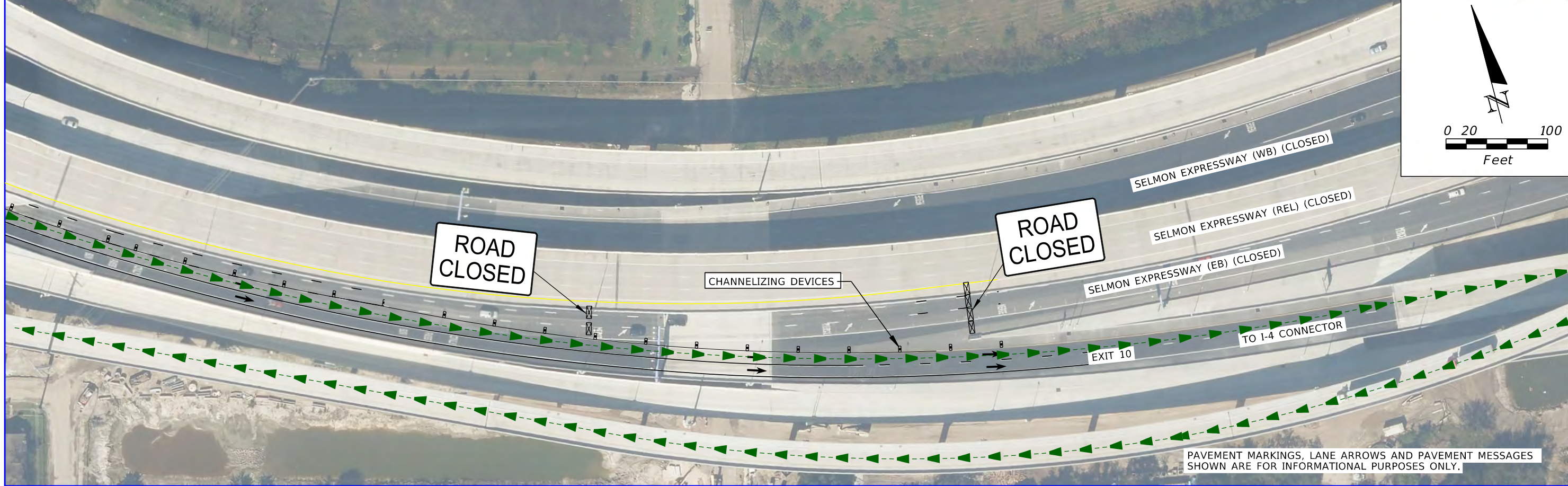
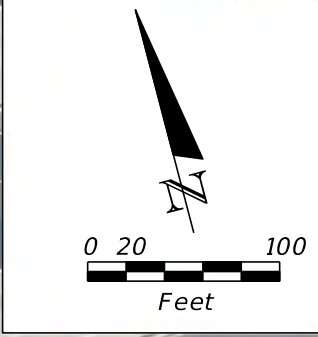
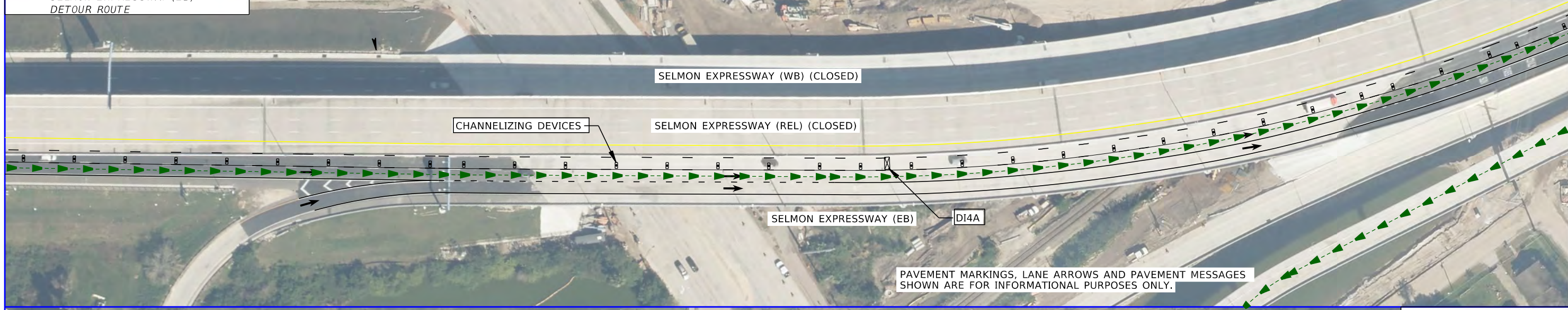
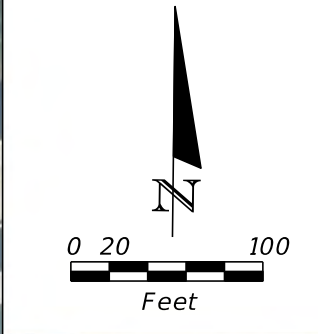
DETOUR DETAIL (3)
SEGMENT 3

SHEET NO.
14

THE OFFICIAL RECORD OF THIS SHEET IS THE ELECTRONIC FILE DIGITALLY SIGNED AND SEALED UNDER RULE 61G15-23.004, F.A.C.

LEGEND:

	TRAFFIC FLOW
	WORK AREA
	CONSTRUCTION SIGN
	TYPE I OR TYPE II BARRICADE OR VERTICAL PANEL, DRUM OR CONES PER INDEX 600
	ADVANCE WARNING ARROW PANEL
	TYPE III BARRICADE
	PORTABLE CHANGEABLE (VARIABLE) MESSAGE SIGN
	SELMON EXPRESSWAY (WB) DETOUR ROUTE
	SELMON EXPRESSWAY (EB) DETOUR ROUTE



REVISIONS			
DATE	DESCRIPTION	DATE	DESCRIPTION

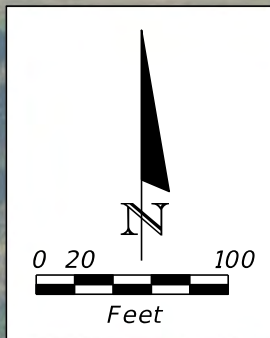
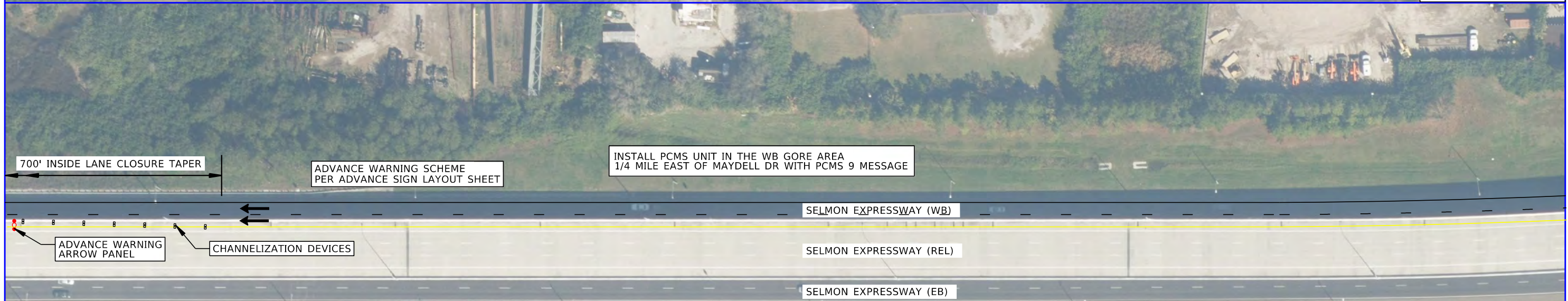
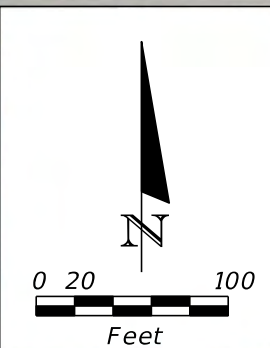
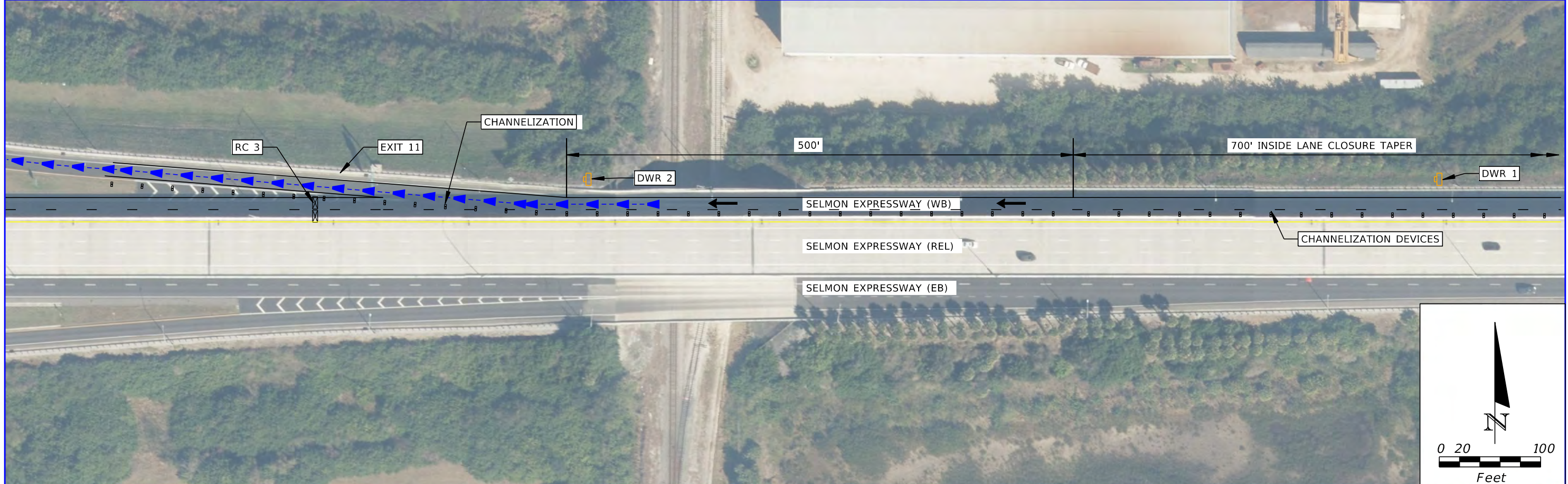
Kisinger Campo & Associates Corp.
 201 N. Franklin Street, Suite 400
 Tampa, Florida 33602
 Florida Certificate of Authorization No. 02317
 Engineer of Record: Darren P. Brandes, P.E.
 P.E. No.: 53982

TAMPA HILLSBOROUGH EXPRESSWAY AUTHORITY		
ROAD NO.	COUNTY	PROJECT ID
618	HILLSBOROUGH	N/A

DETOUR DETAIL (4)
SEGMENT 3

SHEET NO.
 15

THE OFFICIAL RECORD OF THIS SHEET IS THE ELECTRONIC FILE DIGITALLY SIGNED AND SEALED UNDER RULE 61G15-23.004, F.A.C.



LEGEND:

	TRAFFIC FLOW
	WORK AREA
	CONSTRUCTION SIGN
	TYPE I OR TYPE II BARRICADE OR VERTICAL PANEL, DRUM OR CONES PER INDEX 600
	ADVANCE WARNING ARROW PANEL
	TYPE III BARRICADE
	PORTABLE CHANGEABLE (VARIABLE) MESSAGE SIGN
	SELMON EXPRESSWAY (WB) DETOUR ROUTE
	SELMON EXPRESSWAY (EB) DETOUR ROUTE

REVISIONS			
DATE	DESCRIPTION	DATE	DESCRIPTION

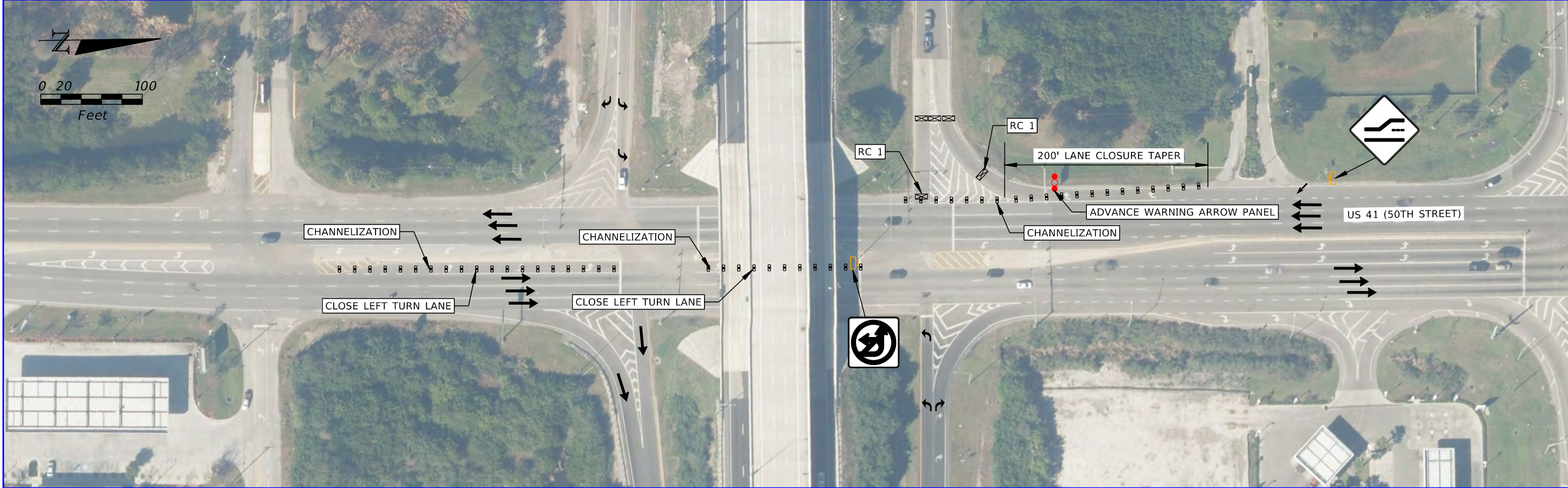
Kisinger Campo & Associates Corp.
 201 N. Franklin Street, Suite 400
 Tampa, Florida 33602
 Florida Certificate of Authorization No. 02317
 Engineer of Record: Darren P. Brandes, P.E.
 P.E. No.: 53982

TAMPA HILLSBOROUGH EXPRESSWAY AUTHORITY		
ROAD NO.	COUNTY	PROJECT ID
618	HILLSBOROUGH	N/A

**DETOUR DETAIL (5)
 SEGMENT 3**

SHEET NO.
 16

THE OFFICIAL RECORD OF THIS SHEET IS THE ELECTRONIC FILE DIGITALLY SIGNED AND SEALED UNDER RULE 61G15-23.004, F.A.C.



LEGEND:

	TRAFFIC FLOW
	WORK AREA
	CONSTRUCTION SIGN
	TYPE I OR TYPE II BARRICADE OR VERTICAL PANEL, DRUM OR CONES PER INDEX 600
	ADVANCE WARNING ARROW PANEL
	TYPE III BARRICADE
	PORTABLE CHANGEABLE (VARIABLE) MESSAGE SIGN
	SELMON EXPRESSWAY (WB) DETOUR ROUTE
	SELMON EXPRESSWAY (EB) DETOUR ROUTE

REVISIONS			
DATE	DESCRIPTION	DATE	DESCRIPTION

Kisinger Campo & Associates Corp.
 201 N. Franklin Street, Suite 400
 Tampa, Florida 33602
 Florida Certificate of Authorization No. 02317
 Engineer of Record: Darren P. Brandes, P.E.
 P.E. No.: 53982

TAMPA HILLSBOROUGH EXPRESSWAY AUTHORITY		
ROAD NO.	COUNTY	PROJECT ID
618	HILLSBOROUGH	N/A

**DETOUR DETAIL (6)
 SEGMENT 3**

SHEET NO.
17