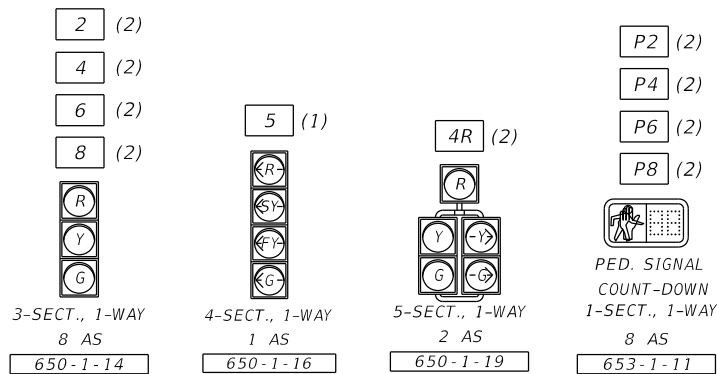


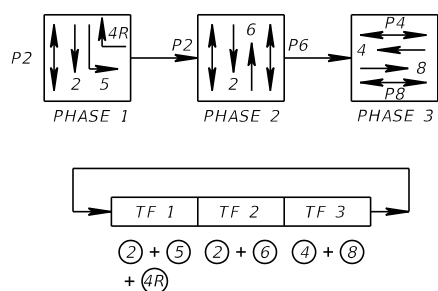
SIGNAL HEAD DETAILS



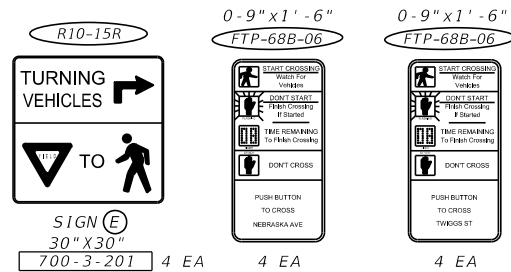
CONTROLLER OPERATION:

1. MAJOR STREET IS NEBRASKA AVE (MOVEMENTS 2, 5 AND 6). MINOR STREET IS TWIGGS ST (MOVEMENTS 4 AND 8).
2. FLASHING OPERATION IS YELLOW FOR NEBRASKA AVE AND RED FOR TWIGGS ST. WHEN SIGNAL IS IN FLASHING MODE, MOVEMENTS 2 AND 6 SHALL FLASH YELLOW. ALL OTHER VEHICLE MOVEMENTS SHALL FLASH RED.
3. EACH LEFT TURN MOVEMENT SHALL HAVE CONDUCTORS AVAILABLE FOR PROTECTED AND PERMISSIVE OPERATION.
4. MOVEMENT 5 WILL OPERATE IN PROTECTED/PERMISSIVE MODE.
5. SIGNAL TIMINGS TO BE ADJUSTED BY ENGINEER OF RECORD.
6. CONTROLLER SHALL OPERATE AS AN SOP 11 (MODIFIED).

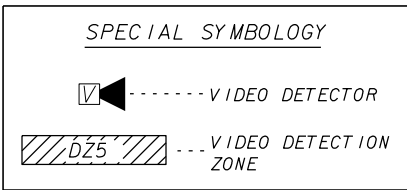
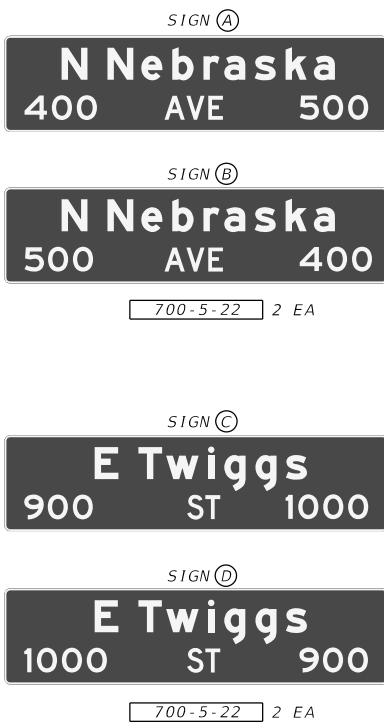
S.O.P. 11 MODIFIED



CONTROLLER TIMINGS								
TIMING FUNCTION	1	2	3	4	5	6	7	8
MOVEMENT NUMBER	1	2	3	4	5	6	7	8
MINIMUM GREEN		14.0		6.0	6.0	14.0		6.0
EXTENSION		3.5		3.0	3.0	3.5		3.0
MAXIMUM GREEN 1		50.0		25.0	20.0	50.0		25.0
MAXIMUM GREEN 2								
YELLOW CLEARANCE	4.0	4.0		4.0	4.0	4.0		3.7
ALL RED		2.1		2.5	2.0	2.1		2.5
PEDESTRIAN WALK		7.0		7.0	7.0	7.0		7.0
PED. CLEARANCE		17.0		18.0	17.0	18.0		18.0
RECALL		MIN		MIN	MIN			

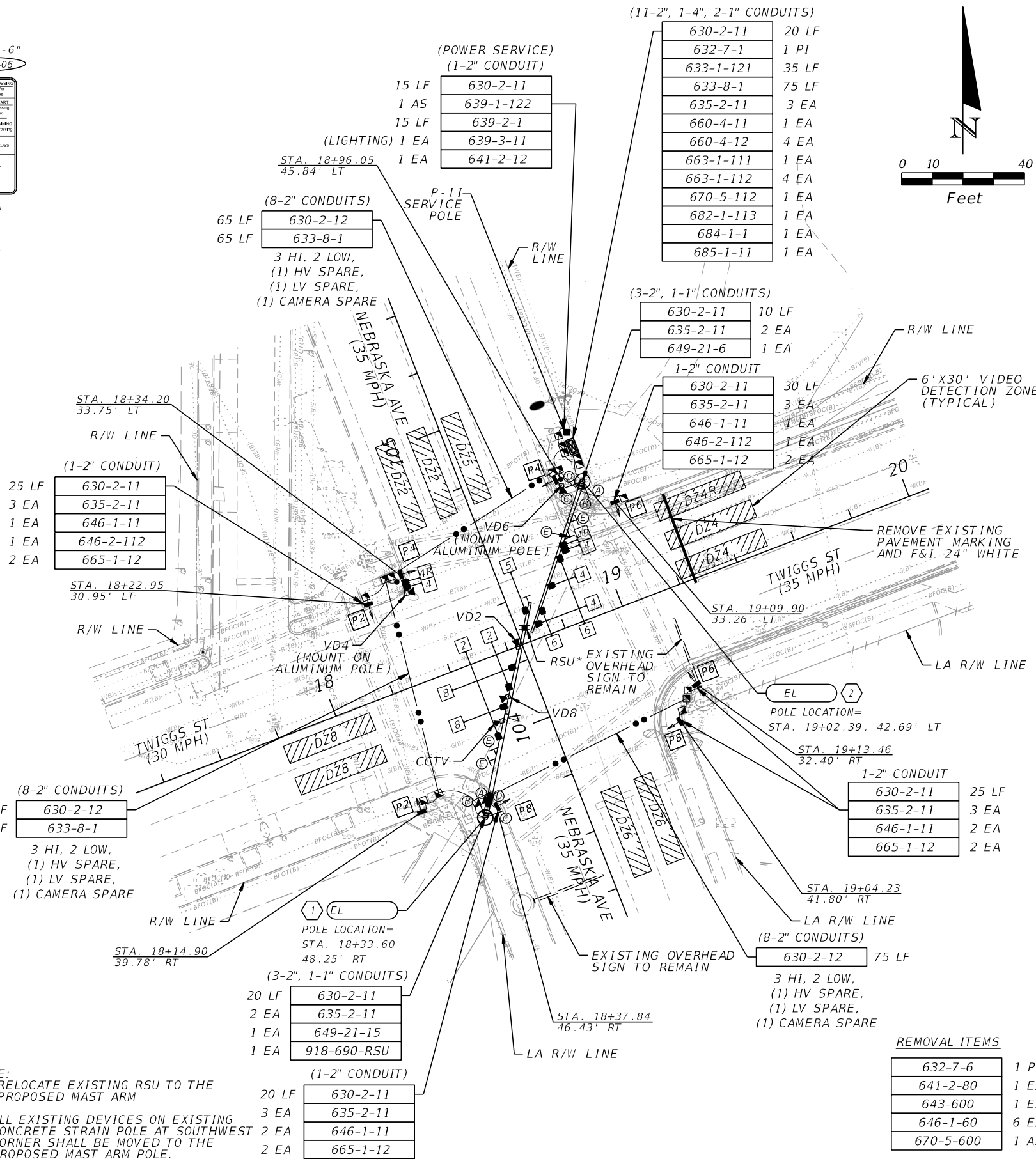


INTERNALLY ILLUMINATED DUAL FACED SIGNS

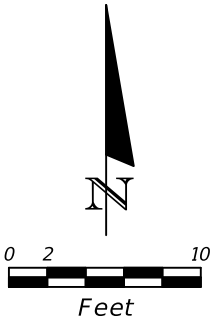


VIDEO DETECTOR CHART		
VIDEO DETECTOR	DETECTION ZONE	DELAY TIME (SECS)
VD 2	DZ 2	
	DZ 5	
VD 4	DZ 4	
	DZ 4R	5
VD 6	DZ 6	
VD 8	DZ 8	

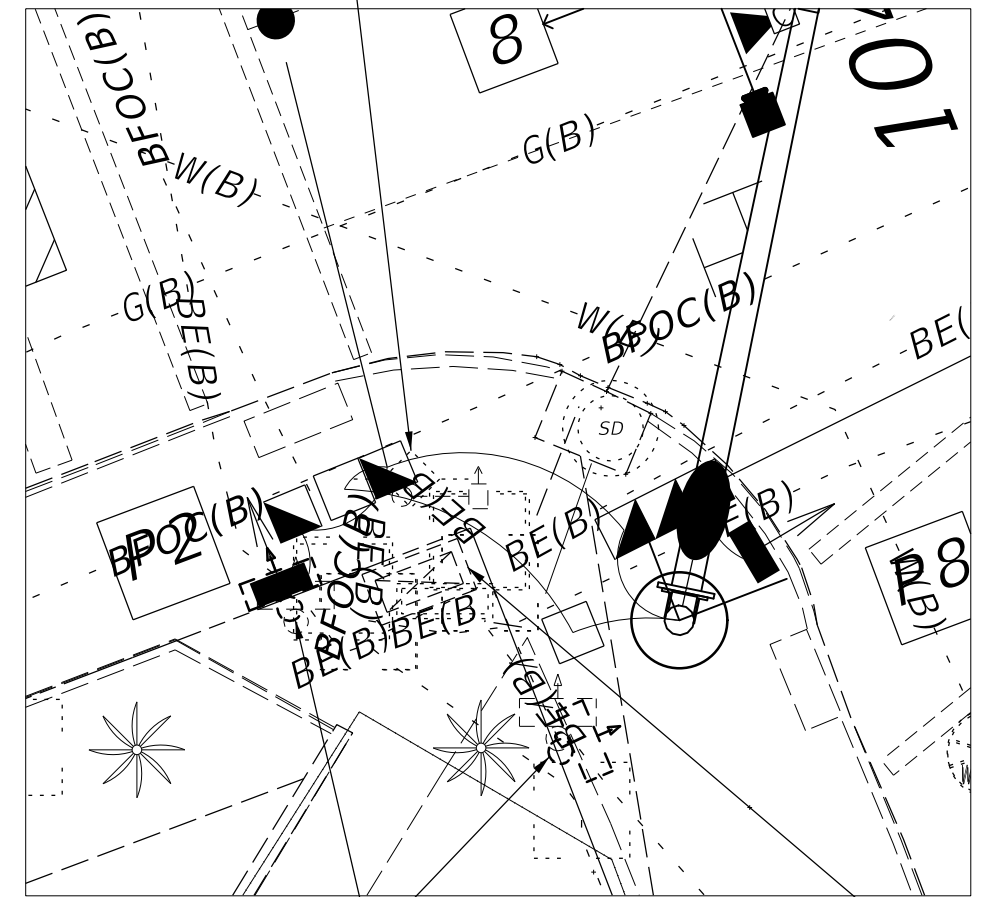
NOTE:
* RELOCATE EXISTING RSU TO THE PROPOSED MAST ARM
** ALL EXISTING DEVICES ON EXISTING CONCRETE STRAIN POLE AT SOUTHWEST CORNER SHALL BE MOVED TO THE PROPOSED MAST ARM POLE.



REVISIONS				TAMPA HILLSBOROUGH EXPRESSWAY AUTHORITY			TWIGGS ST AT NEBRASKA AVE SIGNAL CONCEPT	SHEET NO. 1
DATE	DESCRIPTION	DATE	DESCRIPTION	ROAD NO.	COUNTY	FINANCIAL PROJECT ID		
					HILLSBOROUGH			



EXIST. SIGNAL POLE
TO BE REMOVED

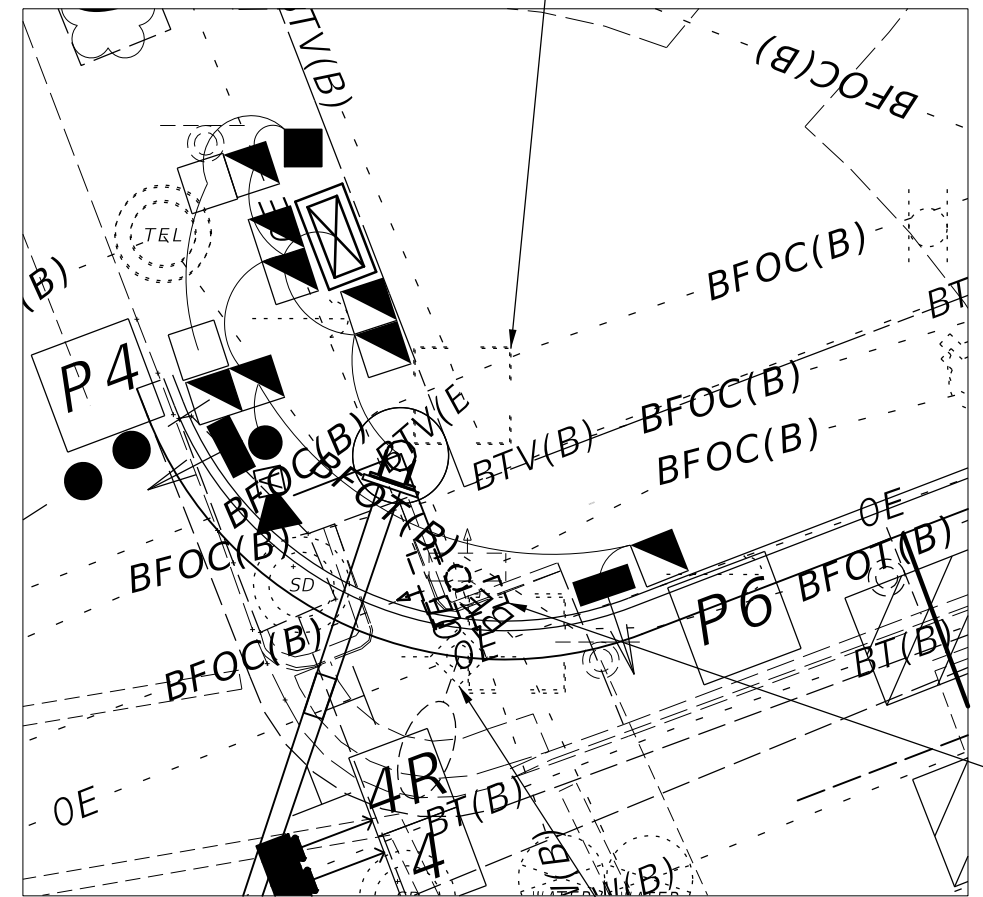


EXIST. PED POLES
TO BE REMOVED

POLE 1 (SW CORNER)

EXIST. CONTROLLER
CABINET TO BE
REMOVED

EXIST. FIBER OPTICS
PULL BOX TO BE
RELOCATED



EXIST. PED POLE
TO BE REMOVED

EXIST. WOODEN SIGNAL
POLE TO BE REMOVED

POLE 2 (NE CORNER)

REVISIONS				TAMPA HILLSBOROUGH EXPRESSWAY AUTHORITY	TWIGGS ST AT NEBRASKA AVE SIGNAL DETAIL	SHEET NO. 2
DATE	DESCRIPTION	DATE	DESCRIPTION			

POLE DATA

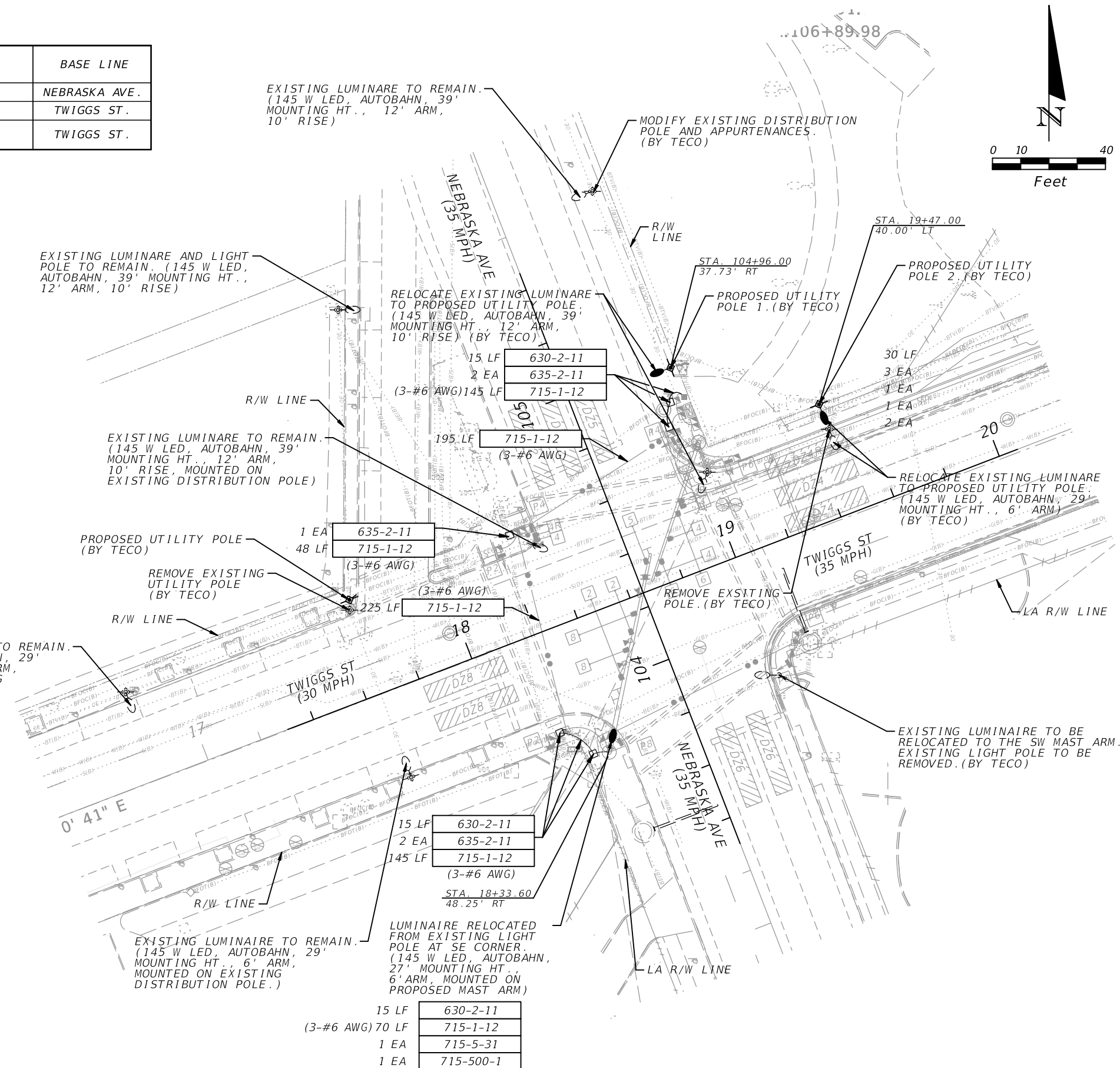
POLE NO.	STATION	DIST. OR ARM	LUMINAIRE WATTAGE	LUMINAIRE MOUNTING HEIGHT	POLE SETBACK	BASE LINE
1	104+96.00	12'	145	39'	37.73' RT	NEBRASKA AVE.
2	19+47.00	6'	145	29'	40.00' LT	TWIGGS ST.
SW SIGNAL POLE	18+33.60	6'	145	27'	48.25' RT	TWIGGS ST.

LEGEND

SYMBOLS DESCRIPTION

- RELOCATED LUMINAIRE (BY TECO)
- PROPOSED DISTRIBUTION POLE (BY TECO)
- EXISTING LUMINAIRE AND POLE
- EXISTING LUMINAIRE MOUNTED ON EXISTING DISTRIBUTION POLE

- NOTES:
- ILLUMINATION DESIGN PERFORMED BY TECO ENERGY.
 - LUMINAIRE TO BE MOUNTED AT HEIGHT OF 27' ON THE SW SIGNAL POLE. LUMINAIRE ARM TO BE PROVIDED BY FDOT.
 - CITY OF TAMPA WILL INSTALL, USING TWO INCH CONDUIT, ALL UNDERGROUND CONDUIT TO FEED PROPOSED LIGHTING INSTALLED ON TRAFFIC CONTROL POLE. A HANDHOLE, TECO NO. 2004655 (TECO SUPPLIED), WILL BE INSTALLED BY TECO AT THE BASE AT EACH TRAFFIC SIGNAL CONTROL POLE REQUIRING LIGHTING TO ACCOMODATE TECO FUSING. HOWEVER, HANDHOLE EXISTS IN THE FIELD CUSTOMER TO INSTALL AND ELL UP CONDUIT INSIDE EXISTING HANDHOLE.
 - UPON WRITTEN AUTHORIZATION, TECO WILL INSTALL LIGHTING CABLE AND LUMINAIRE BRACKET AND LUMINAIRE WILL BE SIZED BY TECO.



REVISIONS		TAMPA HILLSBOROUGH EXPRESSWAY AUTHORITY		TWIGGS ST AT NEBRASKA AVE LIGHTING CONCEPT	SHEET NO. 3
DATE	DESCRIPTION	DATE	DESCRIPTION		