

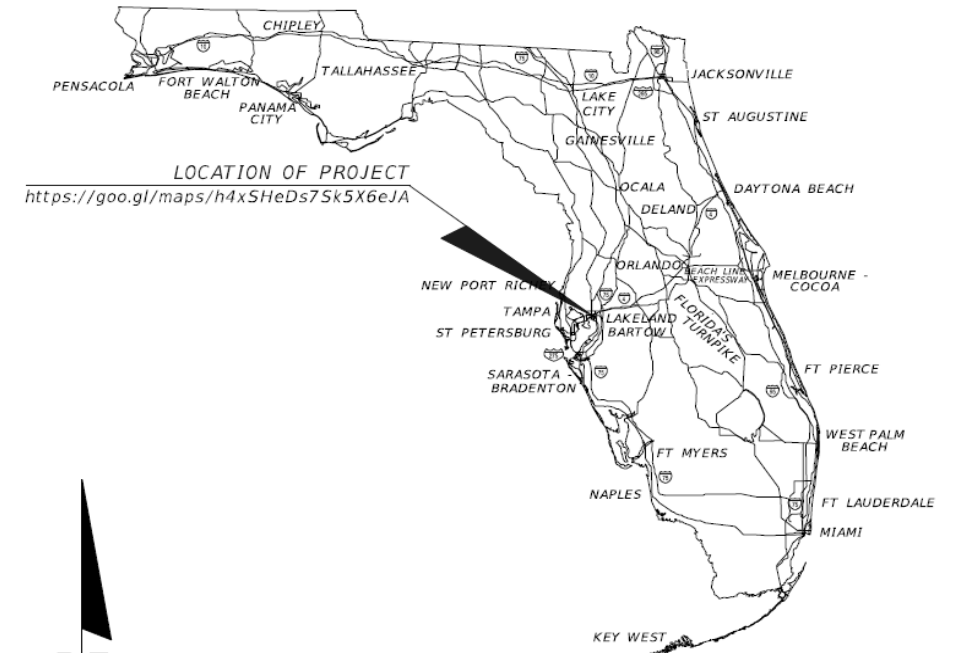
TAMPA HILLSBOROUGH  
EXPRESSWAY AUTHORITY

CONTRACT PLANS

PROJECT ID: O-00419

HILLSBOROUGH COUNTY (10002)

E. TWIGGS STREET UTILITY ADJUSTMENTS



INDEX OF ROADWAY PLANS

SHEET NO.	SHEET DESCRIPTION
1	KEY SHEET
2	SIGNATURE SHEET
3	GENERAL NOTES
UTV-1	SUMMARY OF VERIFIED UTILITIES
4 - 5	UTILITY ADJUSTMENT TYPICAL SECTION* ROADWAY PLAN*

\* PLAN SHEETS PROVIDED FOR INFORMATION ONLY

**Verizon**  
**Business**  
**MCI/XO**  
**Green Line**  
**Markups**

**James Barra**  
MCI/Verizon Services Operations  
Engineer III, Spec-Ntwk Eng & Ops  
Engineering OSP BAU & One Fiber  
MCI Communications Services  
Cell 813-928-9881  
[James.Barra1@VerizonWireless.com](mailto:James.Barra1@VerizonWireless.com)

**Thomas Darling**  
MCI Local Coordinator – OSP Engineer  
WD Communications Inc  
727-804-3870 (C)

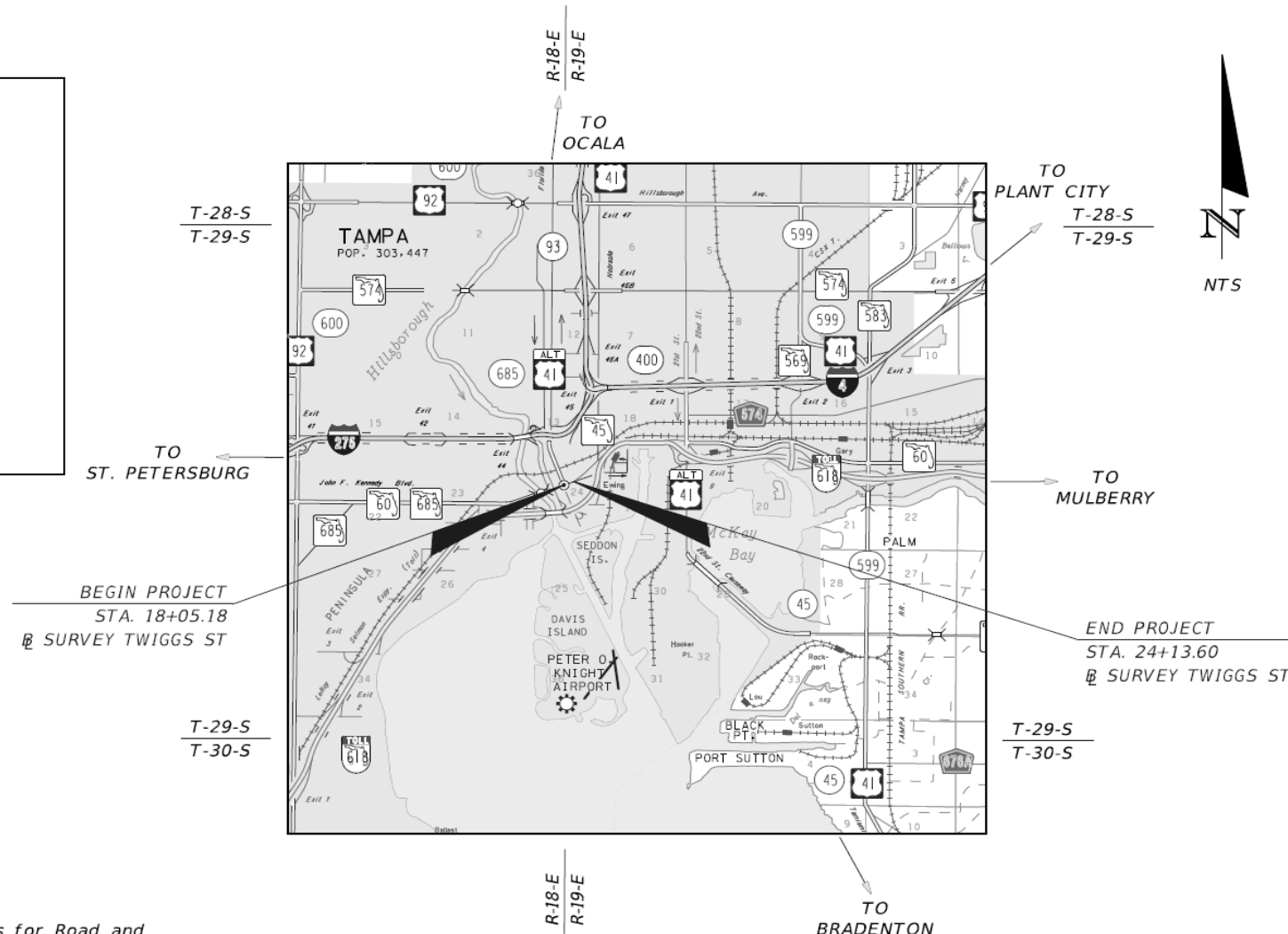
GOVERNING STANDARD PLANS:

Florida Department of Transportation, FY2018/19 Standard Plans for Road and Bridge Construction and applicable Interim Revisions (IRs).

Standard Plans for Road Construction and associated IRs are available at the following website: <http://www.fdot.gov/design/standardplans>

GOVERNING STANDARD SPECIFICATIONS:

Florida Department of Transportation, July 2018 Standard Specifications for Road and Bridge Construction at the following website: <http://www.fdot.gov/programmanagement/Implemented/SpecBooks>



ROADWAY PLANS  
ENGINEER OF RECORD:

MEGAN M. TETRO, P.E. NO.: 76120  
WANTMAN GROUP, INC.  
3111 W. DR. MARTIN LUTHER KING JR. BLVD.,  
SUITE 375, TAMPA, FL 33607  
(813) 574-3190  
CERTIFICATE OF AUTHORIZATION NO.: 6091

THEA PROJECT MANAGER:

DAVID MAY, P.E.

CONSTRUCTION CONTRACT NO.	FISCAL YEAR	SHEET NO.
		1

THE OFFICIAL RECORD OF THIS SHEET IS THE ELECTRONIC FILE DIGITALLY SIGNED AND SEALED UNDER RULE 61G15-23.004, F.A.C.

CURVE DATA SR45-1  
 PI STA. = 106+46.41  
 Δ = 21° 30' 38" (RT)  
 D = 24° 23' 33"  
 T = 44.62  
 L = 88.18  
 R = 234.89  
 PC STA. = 106+01.79  
 PT STA. = 106+89.98  
 3x1.5" BURIED FIBER OPTIC CABLE / TO REMAIN  
 FIBERLIGHT

**MCI / Verizon Business**  
**(Old Western Union Manhole System)**

**MCI / Verizon Business**  
**(Old ICI network With ACSi)**

**XO (Verizon Business), Hanhole**

**MCI / Verizon Business**  
**4-1.5" HDPE**

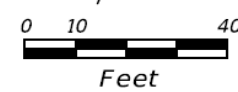
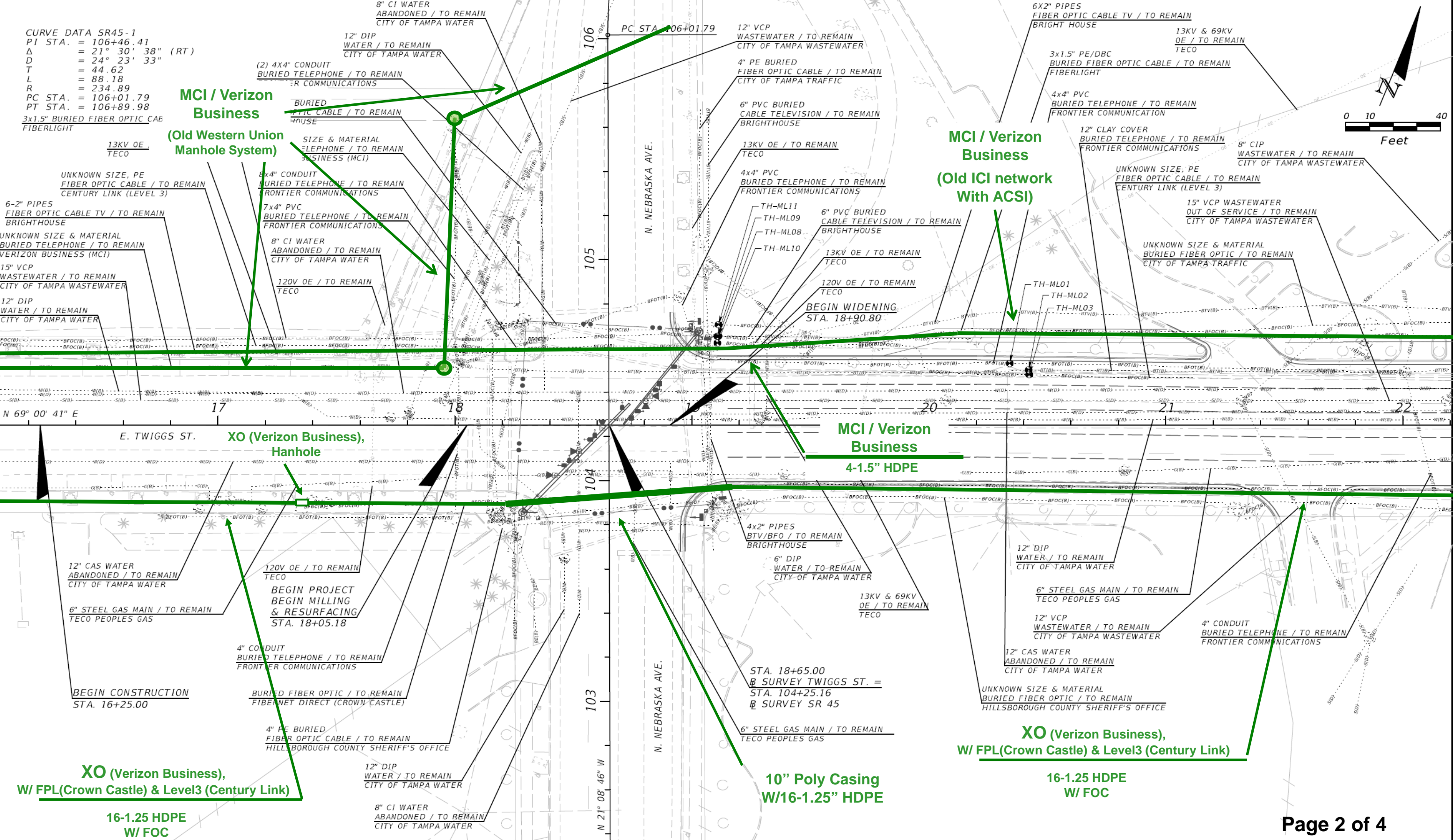
**XO (Verizon Business), W/ FPL(Crown Castle) & Level3 (Century Link)**

**XO (Verizon Business), W/ FPL(Crown Castle) & Level3 (Century Link)**

**16-1.25 HDPE W/ FOC**

**10" Poly Casing W/16-1.25" HDPE**

**16-1.25 HDPE W/ FOC**



REVISIONS			
DATE	DESCRIPTION	DATE	DESCRIPTION

MEGAN M. TETRO, P.E.  
 FLORIDA PE NO. 76120  
 WANTMAN GROUP, INC.  
 3111 W. MARTIN LUTHER KING JR. BLVD.,  
 SUITE 375, TAMPA, FL 33607  
 CERTIFICATE OF AUTHORIZATION NO. 6091

TAMPA HILLSBOROUGH EXPRESSWAY AUTHORITY		
ROAD	COUNTY	CONTRACT NO.
TWIGGS	HILLSBOROUGH	000419

**UTILITY ADJUSTMENT (1)**

SHEET NO. 4

THE OFFICIAL RECORD OF THIS SHEET IS THE ELECTRONIC FILE DIGITALLY SIGNED AND SEALED UNDER RULE 61G15-23.004, F.A.C.

**MCI / Verizon Business**  
(Old Western Union Manhole System)

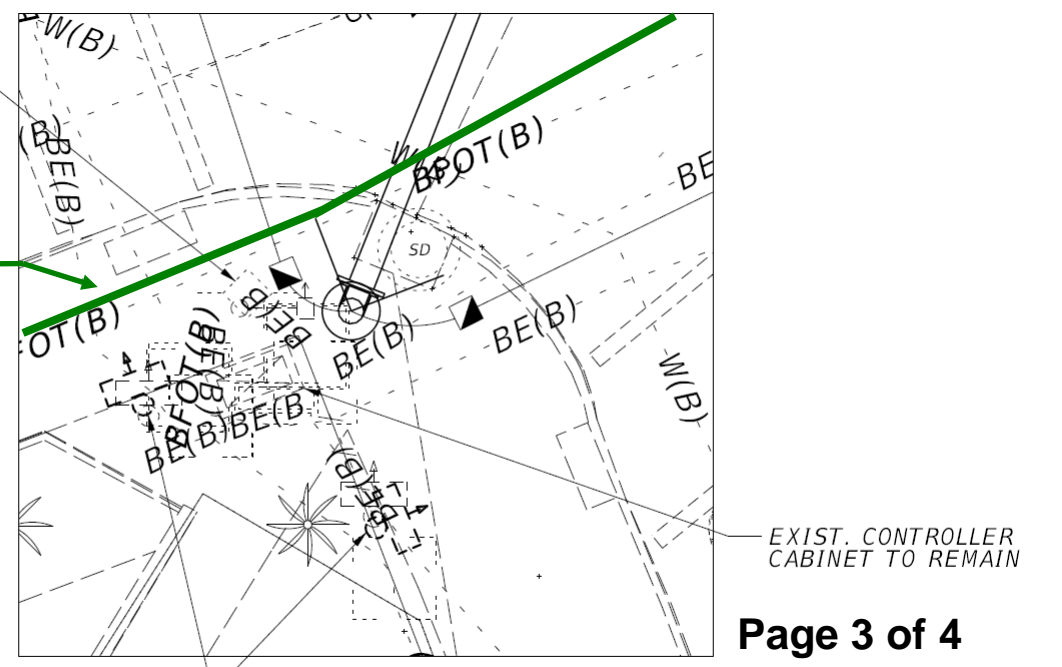
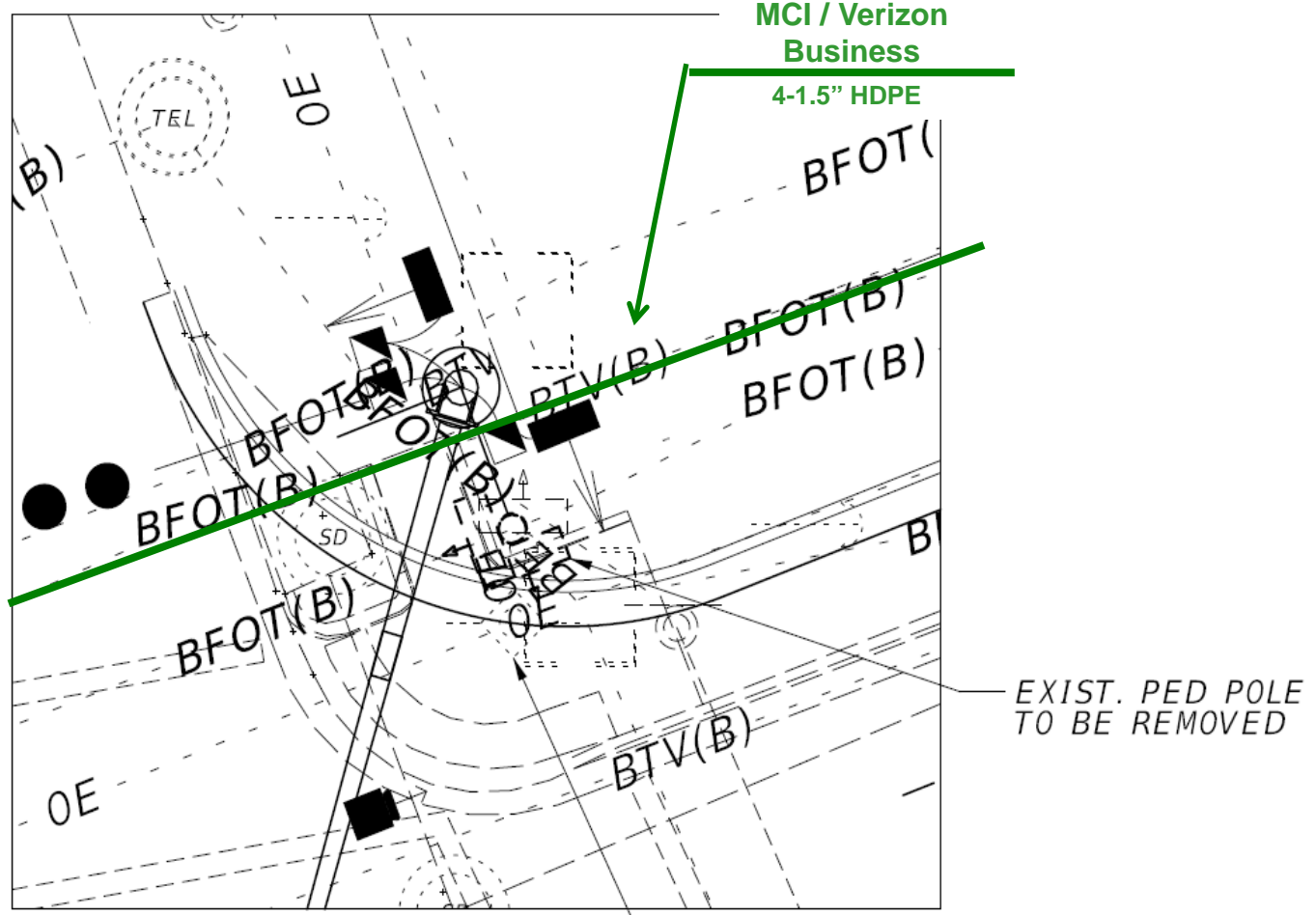
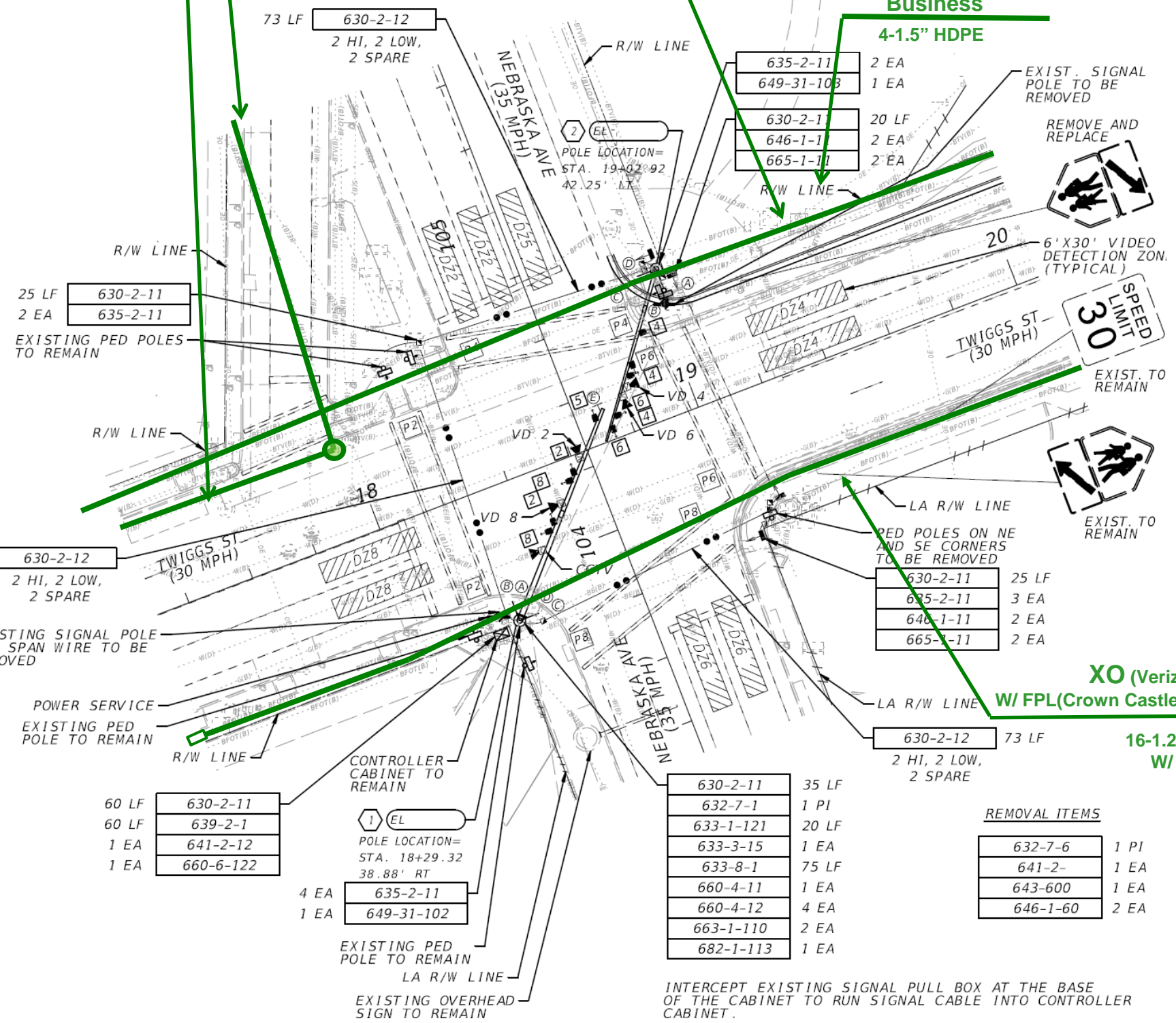
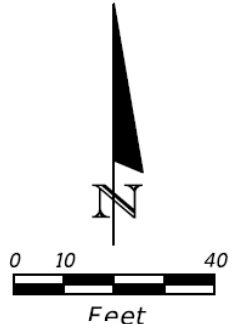
**MCI / Verizon Business**  
(Old ICI network With ACSI)

**MCI / Verizon Business**  
4-1.5" HDPE

**XO (Verizon Business),**  
W/ FPL(Crown Castle) & Level3 (Century Link)

**16-1.25 HDPE**  
W/ FOC

**MCI / Verizon Business**  
4-1.5" HDPE



635-2-11	2 EA
649-31-10B	1 EA
630-2-1	20 LF
646-1-1	2 EA
665-1-1	2 EA

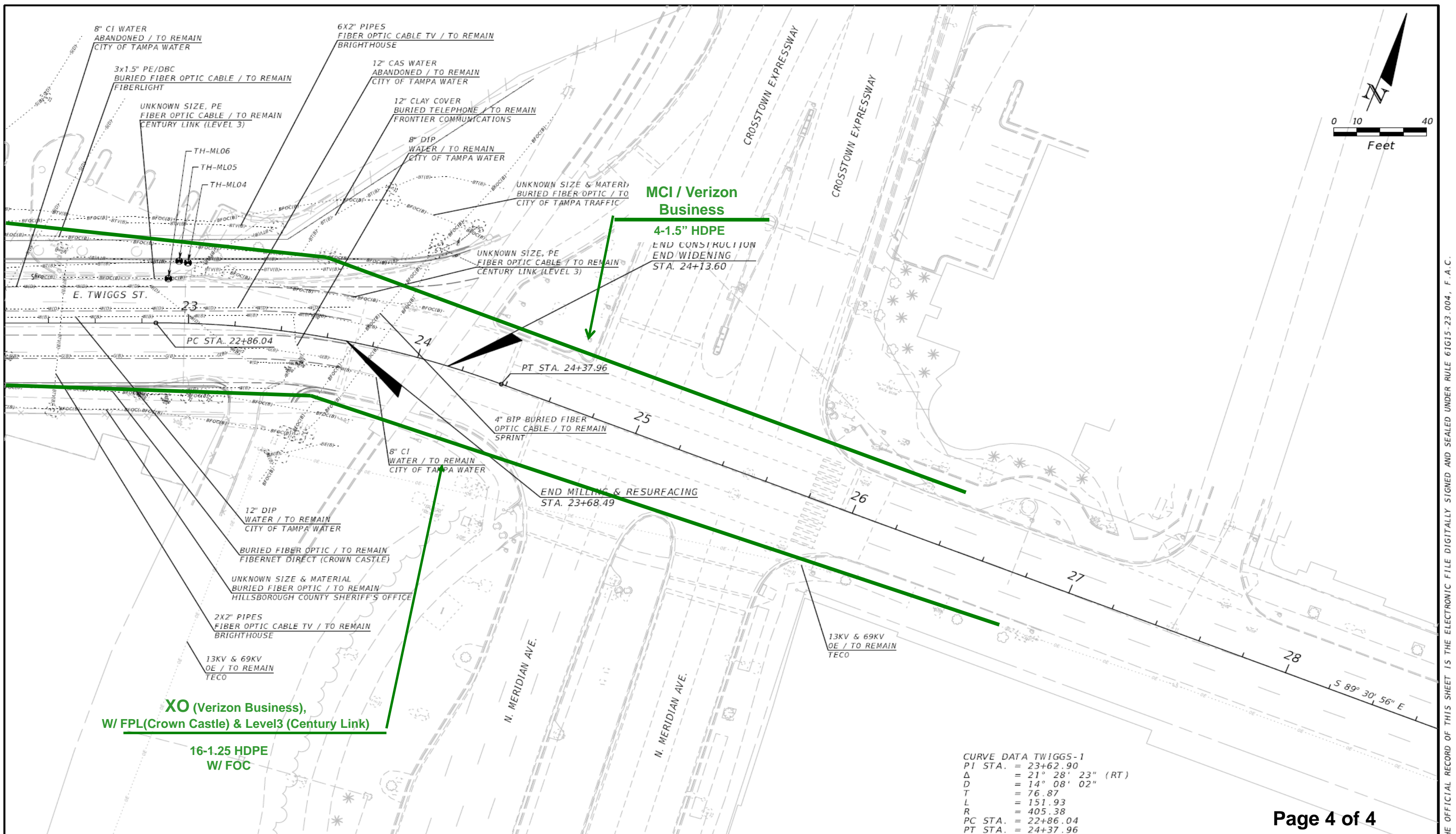
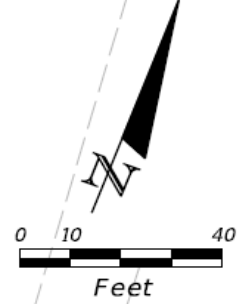
630-2-11	25 LF
635-2-11	3 EA
646-1-11	2 EA
665-1-11	2 EA

630-2-11	35 LF
632-7-1	1 PI
633-1-121	20 LF
633-3-15	1 EA
633-8-1	75 LF
660-4-11	1 EA
660-4-12	4 EA
663-1-110	2 EA
682-1-113	1 EA

**REMOVAL ITEMS**

632-7-6	1 PI
641-2-	1 EA
643-600	1 EA
646-1-60	2 EA

INTERCEPT EXISTING SIGNAL PULL BOX AT THE BASE OF THE CABINET TO RUN SIGNAL CABLE INTO CONTROLLER CABINET.



**MCI / Verizon Business**

**4-1.5" HDPE**  
 END CONSTRUCTION  
 END WIDENING  
 STA. 24+13.60

**XO (Verizon Business),  
 W/ FPL(Crown Castle) & Level3 (Century Link)**

**16-1.25 HDPE  
 W/ FOC**

CURVE DATA TWIGGS-1  
 PI STA. = 23+62.90  
 Δ = 21° 28' 23" (RT)  
 D = 14° 08' 02"  
 T = 76.87  
 L = 151.93  
 R = 405.38  
 PC STA. = 22+86.04  
 PT STA. = 24+37.96

REVISIONS			
DATE	DESCRIPTION	DATE	DESCRIPTION

MEGAN M. TETRO, P.E.  
 FLORIDA PE NO. 76120  
 WANTMAN GROUP, INC.  
 3111 W. MARTIN LUTHER KING JR. BLVD.,  
 SUITE 375, TAMPA, FL 33607  
 CERTIFICATE OF AUTHORIZATION NO. 6091

TAMPA HILLSBOROUGH EXPRESSWAY AUTHORITY		
ROAD	COUNTY	CONTRACT NO.
TWIGGS	HILLSBOROUGH	000419

**UTILITY ADJUSTMENT (2)**

SHEET NO.  
5

THE OFFICIAL RECORD OF THIS SHEET IS THE ELECTRONIC FILE DIGITALLY SIGNED AND SEALED UNDER RULE 61G15-23.004, F.A.C.